

# SUMMARY OF SPRING 2007 ENROLLMENTS

February 26, 2007



*Maine's  
Public  
Universities*

---

UNIVERSITY OF MAINE SYSTEM

---

## SUMMARY OF SPRING 2007 ENROLLMENTS

---

### INTRODUCTION

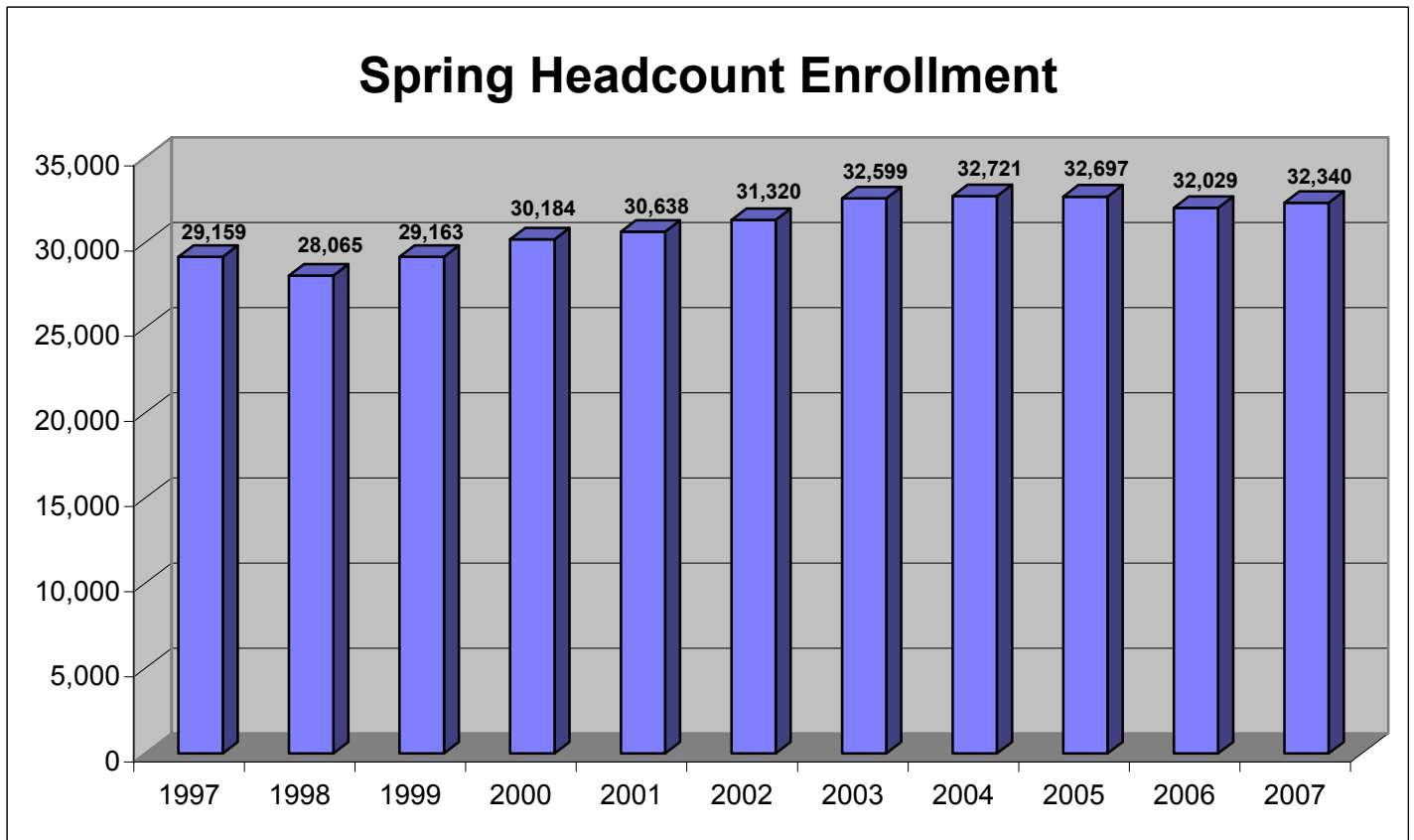
This report provides summary information regarding University enrollments. The tables and graphs show enrollments for the past 11 years, i.e., 1997-2007.

### TABLE OF CONTENTS

	<u>PAGE</u>
Highlights	1
By Headcount	2-4
By FTE (Full-time Equivalent)	5-7
By Change in Semester Enrollment	8-9
By Residence	10-11
By Gender	12-13
Full-Time/Part-Time	14-15
By Degree Level	16
By Degree Level by University	17
First-time First-year & Transfer Students	18
By County of Residence	19-21
By State of Residence	22
By Country of Residence	23
Distance Learning	24

## **HIGHLIGHTS**

- **For the fifth year in a row, spring headcount enrollment within the University of Maine System exceeds 32,000 students.**
- **Headcount enrollment for Spring 2007 is 32,340 students, an increase of 1% from spring 2006. Compared to last spring, the number of full-time students is down by 63 and the number of part-time students is up by 374. There are 20,106 women who make up 62% of the student body and 12,054 men, which account for the other 38%.**
- **Spring FTE enrollment continues to remain over 22,000, with FTE enrollment at 22,681, an increase of 19 FTE students (0.1%) over last springs. For this academic year, spring FTE enrollment was 94% of fall FTE enrollment.**
- **Students who are Maine residents number 28,424, 88% of total enrollment. In-state enrollment increased by 263 students and out-of-state enrollment increased by 48 students. International students (992) increased by 20 students and represent 3% of the student body.**
- **Every county in Maine sends at least 250 students to the University of Maine System. The largest numbers come from Cumberland (5,634), Penobscot (4,558), and Kennebec (2,954).**
- **Students come from all but two states in the country, plus the District of Columbia. A total of 54.4% of out-of-state students (excluding international students) come from the other New England states. Massachusetts alone accounts for 22.7% of students coming from other states.**
- **There are a total of 3,415 students enrolled in distance learning courses in Spring 2007, up 4.8% from 3,259 students in Spring 2006. Distance learning credits were 14,157 compared to 13,827 in Spring 2006 (an increase of 2.4%). About 74%, or 2,523 students, are only enrolled in distance learning courses.**

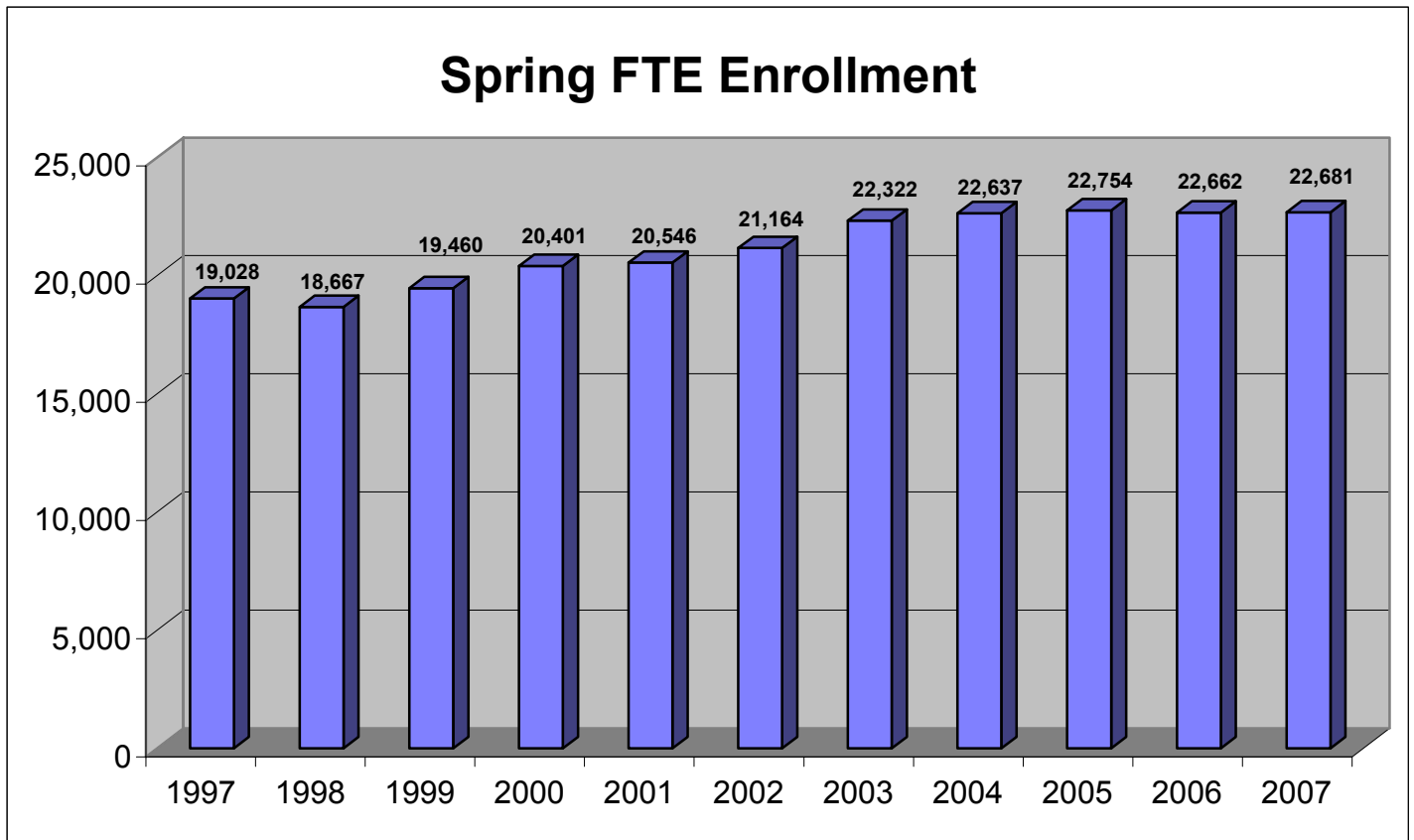


**SPRING HEADCOUNT ENROLLMENT**  
**(2003- 2007)**

	<u>2003</u>	<u>2004</u>	<u>2005</u>	<u>2006</u>	<u>2007</u>	<u>CHANGE FROM</u> <u>2006 TO 2007</u>	
						<u>#</u>	<u>%</u>
UM	10,906	10,875	10,773	10,795	11,003	208	1.9
UMA	5,662	5,655	5,632	5,193	5,203	10	0.2
UMF	2,273	2,272	2,207	2,346	2,286	(60)	(2.6)
UMFK	756	942	1,082	1,144	1,296	152	13.3
UMM	1,137	1,234	1,234	1,111	1,286	175	15.8
UMPI	1,397	1,427	1,486	1,495	1,415	(80)	(5.4)
USM	<u>10,468</u>	<u>10,316</u>	<u>10,283</u>	<u>9,945</u>	<u>9,851</u>	<u>(94)</u>	<u>(0.9)</u>
TOTAL	<u><u>32,599</u></u>	<u><u>32,721</u></u>	<u><u>32,697</u></u>	<u><u>32,029</u></u>	<u><u>32,340</u></u>	<u><u>311</u></u>	<u><u>1.0</u></u>

**SPRING HEADCOUNT ENROLLMENT**  
**(1997 - 2002)**

	<u>1997</u>	<u>1998</u>	<u>1999</u>	<u>2000</u>	<u>2001</u>	<u>2002</u>
UM	9,185	8,818	9,036	9,479	9,863	10,274
UMA	5,233	4,778	5,281	5,468	5,434	5,544
UMF	2,338	2,299	2,364	2,347	2,283	2,256
UMFK	760	731	712	833	814	698
UMM	956	848	874	908	880	960
UMPI	1,319	1,206	1,256	1,367	1,287	1,278
USM	<u>9,368</u>	<u>9,385</u>	<u>9,640</u>	<u>9,782</u>	<u>10,077</u>	<u>10,310</u>
TOTAL	<u><u>29,159</u></u>	<u><u>28,065</u></u>	<u><u>29,163</u></u>	<u><u>30,184</u></u>	<u><u>30,638</u></u>	<u><u>31,320</u></u>



**SPRING FTE ENROLLMENT\***  
**(2003 - 2007)**

	<u>2003</u>	<u>2004</u>	<u>2005</u>	<u>2006</u>	<u>2007**</u>	<u>CHANGE FROM 2006 TO 2007</u>	
						<u>#</u>	<u>%</u>
UM	8,517	8,532	8,544	8,672	8,819	147	1.7
UMA	2,755	2,795	2,811	2,610	2,623	13	0.5
UMF	1,952	1,986	1,937	2,027	1,936	(91)	(4.5)
UMFK	625	750	830	815	847	32	3.9
UMM	690	719	664	607	629	22	3.5
UMPI	1,050	1,094	1,159	1,146	1,094	(53)	(4.6)
USM	<u>6,733</u>	<u>6,761</u>	<u>6,810</u>	<u>6,785</u>	<u>6,734</u>	<u>(51)</u>	<u>(0.8)</u>
TOTAL	<u><u>22,322</u></u>	<u><u>22,637</u></u>	<u><u>22,754</u></u>	<u><u>22,662</u></u>	<u><u>22,681</u></u>	<u><u>19</u></u>	<u><u>0.1</u></u>

\* The formula for calculating FTE (for all campuses except UMF Spring 2007) is as follows:

Undergraduate Credit Hours/15 + Professional (Law) Credit Hours/15 + Graduate Credit Hours/9 = FTE

\*\*UMF: Undergraduate Credit Hours/16 + Graduate Credit Hours/9 = FTE

Totals may not add to detail due to rounding



**SPRING FTE ENROLLMENT\***  
**(1997 - 2002)**

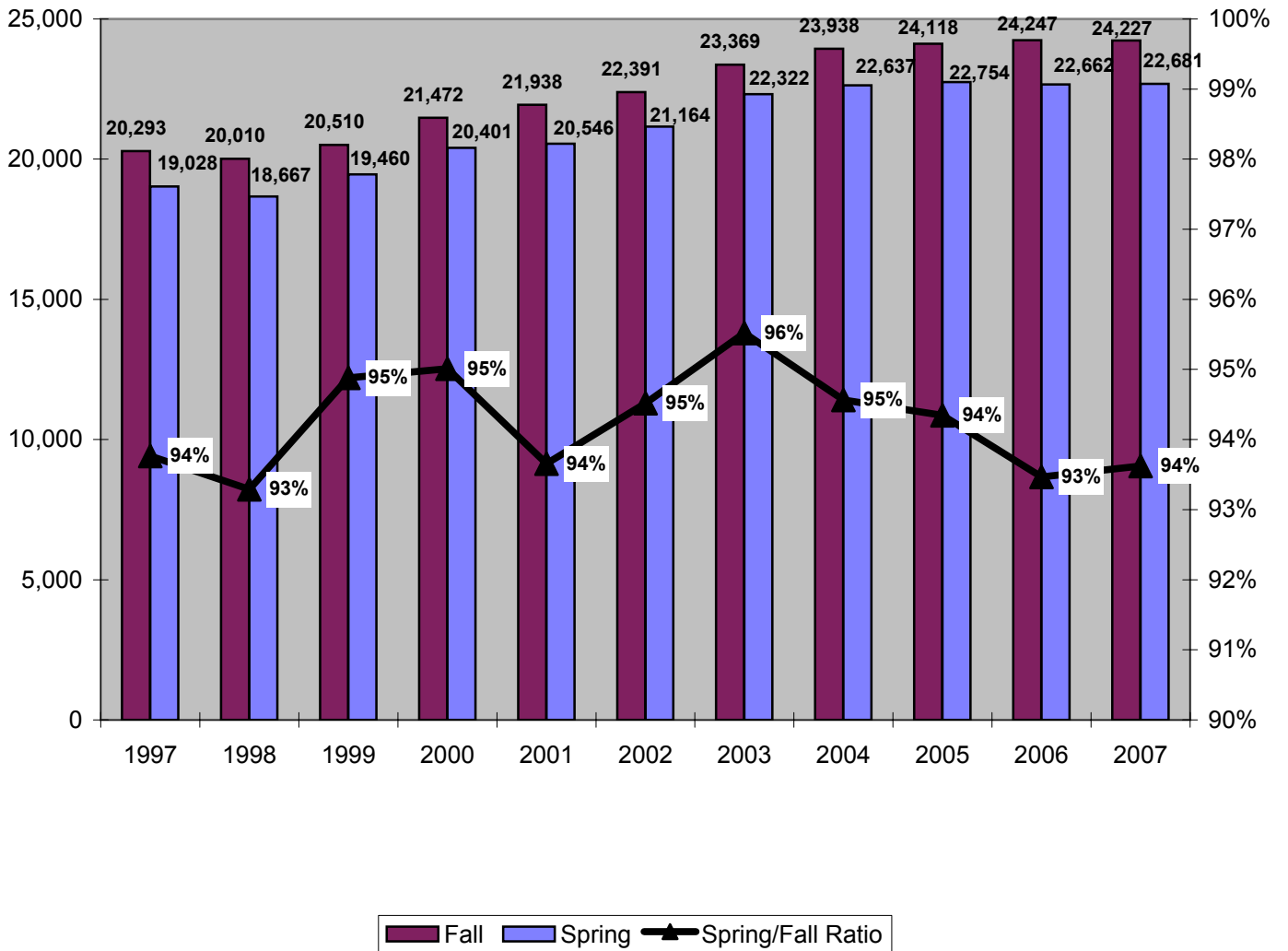
	<u>1997</u>	<u>1998</u>	<u>1999</u>	<u>2000</u>	<u>2001</u>	<u>2002</u>
UM	7,018	6,803	6,995	7,378	7,648	8,035
UMA	2,383	2,191	2,478	2,664	2,577	2,622
UMF	1,918	1,914	1,994	2,014	1,968	1,977
UMFK	506	470	538	686	626	560
UMM	642	599	607	584	571	636
UMPI	1,002	938	963	1,038	1,000	941
USM	<u>5,559</u>	<u>5,752</u>	<u>5,886</u>	<u>6,036</u>	<u>6,157</u>	<u>6,394</u>
TOTAL	<u><u>19,028</u></u>	<u><u>18,667</u></u>	<u><u>19,460</u></u>	<u><u>20,401</u></u>	<u><u>20,546</u></u>	<u><u>21,164</u></u>

\* The formula for calculating FTE (for all campuses except UMF Spring 2007) is as follows:

Undergraduate Credit Hours/15 + Professional (Law) Credit Hours/15 + Graduate Credit Hours/9 = FTE

Totals may not add to detail due to rounding

**CHANGE IN SEMESTER FTE ENROLLMENT  
1997 - 2007**



**FALL-TO-SPRING FTE ENROLLMENT\***  
**(1997 - 2007)\*\***

	1997	1998	1999	2000	2001	2002	2003	2004	2005	2006	2007
<b>UM</b>											
Fall	7,508	7,156	7,356	7,719	7,980	8,335	8,665	8,923	9,054	9,204	9,401
Spring	7,018	6,803	6,995	7,378	7,648	8,035	8,517	8,532	8,544	8,672	8,819
Difference	490	353	361	341	332	300	148	391	511	532	582
Ratio	93.5%	95.1%	95.1%	95.6%	95.8%	96.4%	98.3%	95.6%	94.4%	94.2%	93.8%
<b>UMA</b>											
Fall	2,488	2,398	2,419	2,736	2,706	2,690	2,769	2,936	2,806	2,759	2,689
Spring	2,383	2,191	2,478	2,664	2,577	2,622	2,755	2,795	2,811	2,610	2,623
Difference	105	207	(59)	72	129	68	14	141	(5)	149	66
Ratio	95.8%	91.4%	102.4%	97.4%	95.2%	97.5%	99.5%	95.2%	100.2%	94.6%	97.5%
<b>UMF†</b>											
Fall	2,070	2,024	2,084	2,105	2,123	2,117	2,093	2,116	2,087	2,149	2,126
Spring	1,918	1,914	1,994	2,014	1,968	1,977	1,952	1,986	1,937	2,027	2,066
Difference	152	110	90	91	155	140	141	130	150	122	60
Ratio	92.7%	94.6%	95.7%	95.7%	92.7%	93.4%	93.3%	93.8%	92.8%	94.3%	97.2%
<b>UMFK</b>											
Fall	545	497	589	729	731	694	708	779	907	919	954
Spring	506	470	538	686	626	560	625	750	830	815	847
Difference	40	27	52	43	105	134	84	29	77	104	107
Ratio	92.8%	94.5%	91.3%	94.2%	85.7%	80.6%	88.2%	96.3%	91.5%	88.7%	88.8%
<b>UMM</b>											
Fall	647	641	640	606	605	653	680	754	666	626	617
Spring	642	599	607	584	571	636	690	719	664	607	629
Difference	5	42	34	22	35	17	(10)	36	3	19	(12)
Ratio	99.3%	93.5%	94.8%	96.4%	94.3%	97.4%	101.5%	95.3%	99.6%	97.0%	101.9%
<b>UMPI</b>											
Fall	1,053	1,060	1,036	1,081	1,135	1,058	1,158	1,207	1,293	1,242	1,260
Spring	1,002	938	963	1,038	1,000	941	1,050	1,094	1,159	1,146	1,094
Difference	51	122	73	44	135	118	109	113	135	96	167
Ratio	95.1%	88.5%	92.9%	96.0%	88.1%	88.9%	90.6%	90.6%	89.6%	92.3%	86.8%
<b>USM</b>											
Fall	5,982	6,234	6,386	6,496	6,658	6,844	7,296	7,223	7,305	7,348	7,180
Spring	5,559	5,752	5,886	6,036	6,157	6,394	6,733	6,761	6,810	6,785	6,734
Difference	423	482	500	460	501	450	563	462	495	563	446
Ratio	92.9%	92.3%	92.2%	92.9%	92.5%	93.4%	92.3%	93.6%	93.2%	92.3%	93.8%
<b>TOTAL</b>											
Fall	20,293	20,010	20,510	21,472	21,938	22,391	# 23,369	23,938	24,118	24,247	24,227
Spring	19,028	18,667	19,460	20,401	20,546	21,164	# 22,322	22,637	22,754	22,662	22,681
Difference	1,265	1,343	1,050	1,071	1,392	1,227	1,047	1,302	1,364	1,585	1,545
Ratio	93.8%	93.3%	94.9%	95.0%	93.7%	94.5%	95.5%	94.6%	94.3%	93.5%	93.6%

\* The formula for calculating FTE (for all campuses except UMF AY07) is as follows:

Undergraduate Credit Hours/15 + Professional (Law) Credit Hours/15 + Graduate Credit Hours/9 = FTE

†UMF: Undergraduate Credit Hours/16 + Graduate Credit Hours/9 = FTE

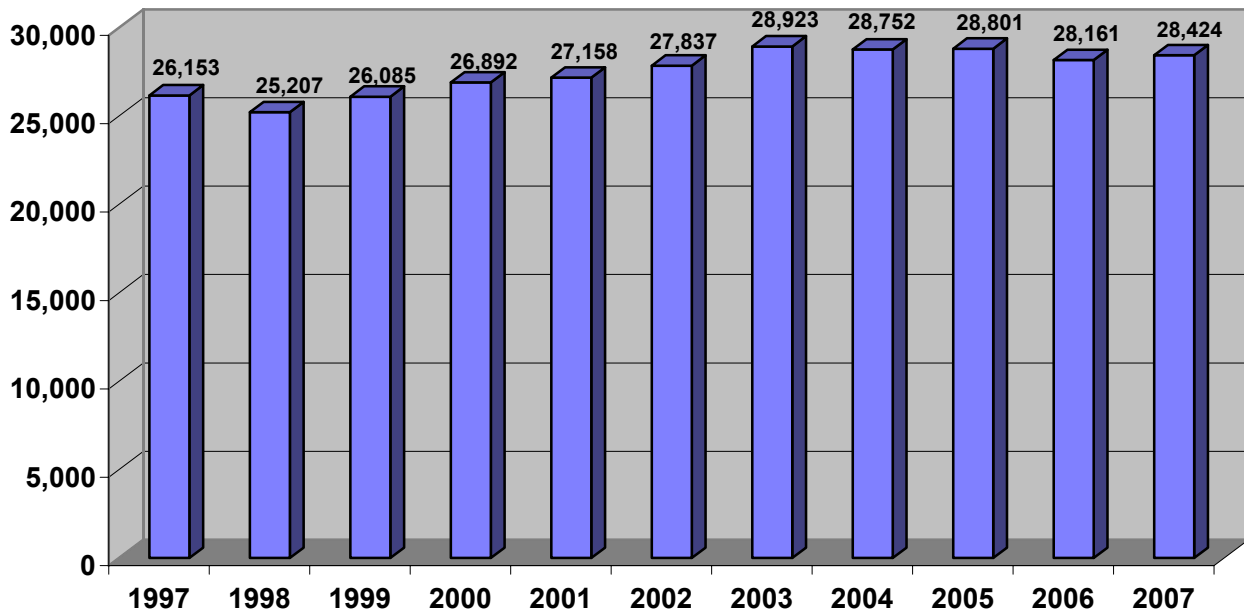
Totals may not add to detail due to rounding

\*\*Years 1997-2007 are academic years, i.e. Fall 2005 is in academic year 2006.

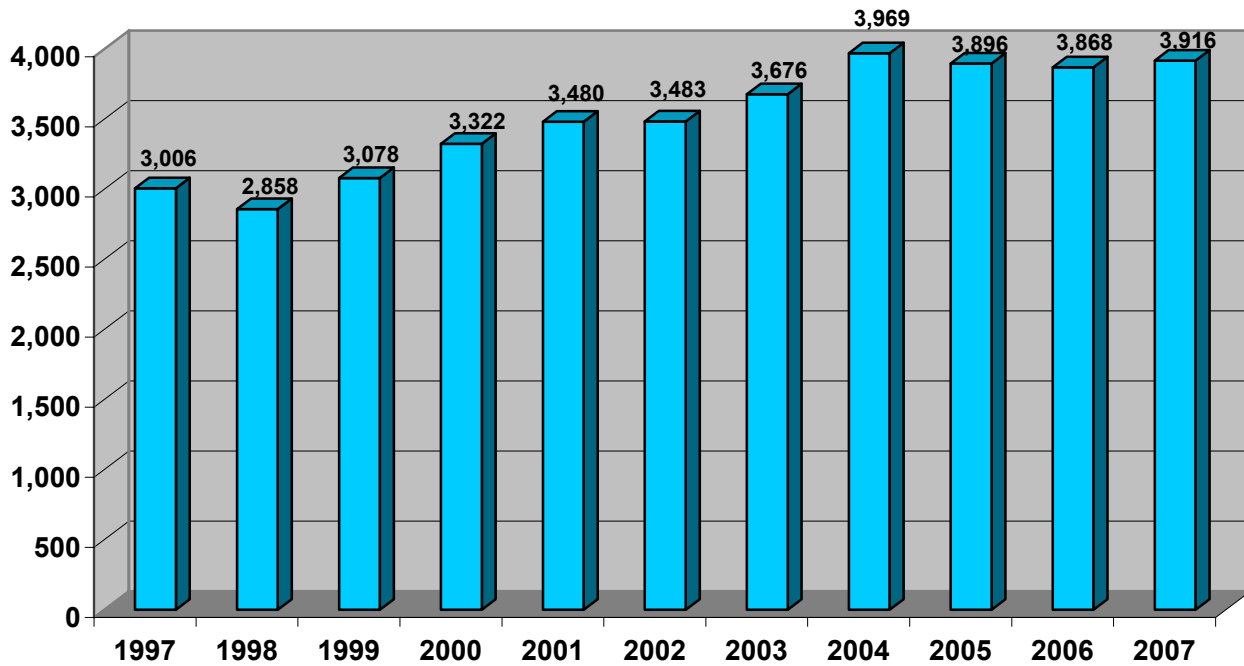
**SPRING HEADCOUNT ENROLLMENT BY RESIDENCE, BY UNIVERSITY**  
**(1997-2007)**

	1997	1998	1999	2000	2001	2002	2003	2004	2005	2006	2007	CHANGE FROM	
												2006 TO 2007	
												#	%
<b><u>UM</u></b>													
In-State	7,583	7,305	7,463	7,898	8,252	8,682	9,223	9,152	9,147	9,135	9,244	109	1.2
Out-of-State	1,602	1,513	1,573	1,581	1,611	1,592	1,683	1,723	1,626	1,660	1,759	99	6.0
Total	9,185	8,818	9,036	9,479	9,863	10,274	10,906	10,875	10,773	10,795	11,003	208	1.9
<b><u>UMA</u></b>													
In-State	5,181	4,746	5,246	5,437	5,324	5,432	5,537	5,490	5,464	5,045	5,061	16	0.3
Out-of-State	52	32	35	31	110	112	125	165	168	148	142	(6)	(4.1)
Total	5,233	4,778	5,281	5,468	5,434	5,544	5,662	5,655	5,632	5,193	5,203	10	0.2
<b><u>UMF</u></b>													
In-State	2,068	1,999	2,027	1,980	1,901	1,853	1,879	1,875	1,841	1,962	1,895	(67)	(3.4)
Out-of-State	270	300	337	367	382	403	394	397	366	384	391	7	1.8
Total	2,338	2,299	2,364	2,347	2,283	2,256	2,273	2,272	2,207	2,346	2,286	(60)	(2.6)
<b><u>UMFK</u></b>													
In-State	618	610	539	575	555	479	535	674	777	876	1,031	155	17.7
Out-of-State	142	121	173	258	259	219	221	268	305	268	265	(3)	(1.1)
Total	760	731	712	833	814	698	756	942	1,082	1,144	1,296	152	13.3
<b><u>UMM</u></b>													
In-State	781	687	720	764	735	755	929	1,005	1,034	939	1,140	201	21.4
Out-of-State	175	161	154	144	145	205	208	229	200	172	146	(26)	(15.1)
Total	956	848	874	908	880	960	1,137	1,234	1,234	1,111	1,286	175	15.8
<b><u>UMPI</u></b>													
In-State	1,108	1,039	1,076	1,104	1,031	1,085	1,135	1,116	1,129	1,133	1,068	(65)	(5.7)
Out-of-State	211	167	180	263	256	193	262	311	357	362	347	(15)	(4.1)
Total	1,319	1,206	1,256	1,367	1,287	1,278	1,397	1,427	1,486	1,495	1,415	(80)	(5.4)
<b><u>USM</u></b>													
In-State	8,814	8,821	9,014	9,104	9,360	9,551	9,685	9,440	9,409	9,071	8,985	(86)	(0.9)
Out-of-State	554	564	626	678	717	759	783	876	874	874	866	(8)	(0.9)
Total	9,368	9,385	9,640	9,782	10,077	10,310	10,468	10,316	10,283	9,945	9,851	(94)	(0.9)
<b><u>TOTAL</u></b>													
In-State	26,153	25,207	26,085	26,862	27,158	27,837	28,923	28,752	28,801	28,161	28,424	263	0.9
Out-of-State	3,006	2,858	3,078	3,322	3,480	3,483	3,676	3,969	3,896	3,868	3,916	48	1.2
Total	29,159	28,065	29,163	30,184	30,638	31,320	32,599	32,721	32,697	32,029	32,340	311	1.0

Spring In-State Enrollment



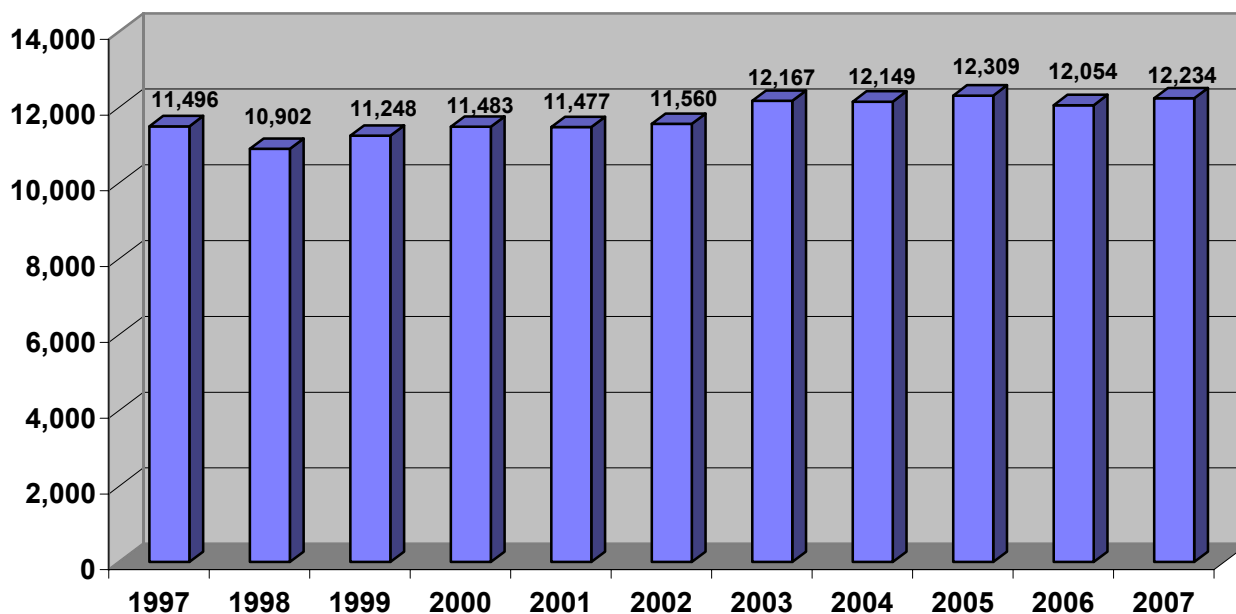
Spring Out-of-State Enrollment



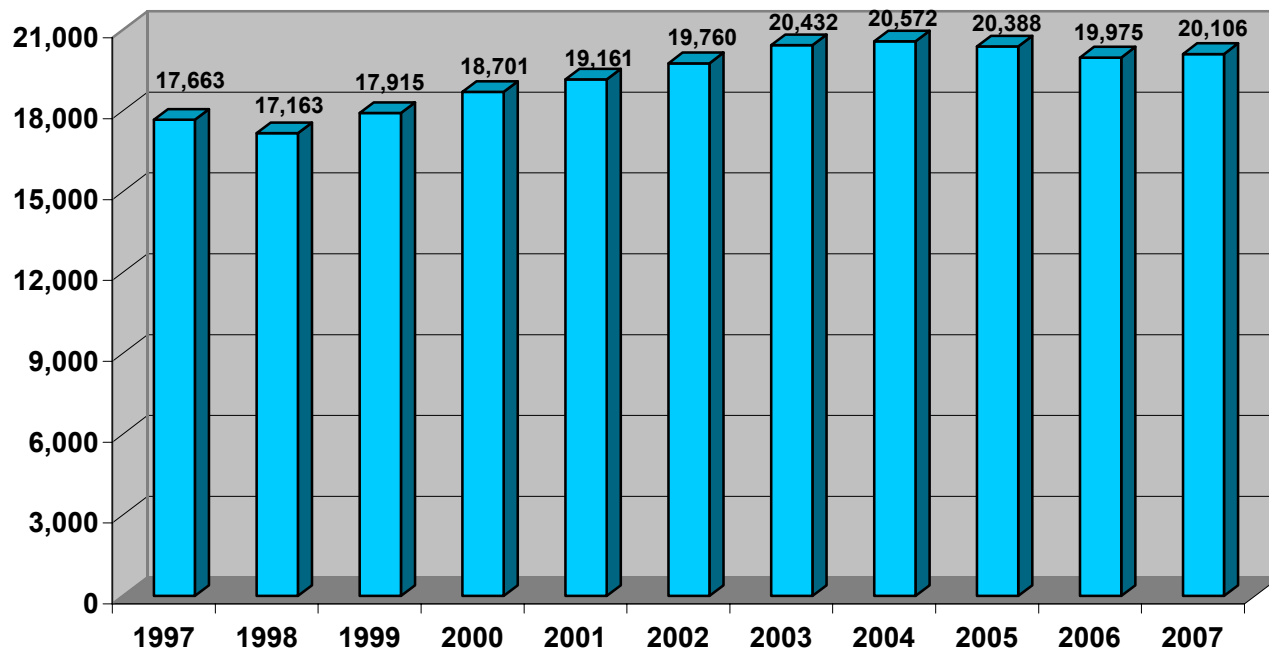
**SPRING HEADCOUNT ENROLLMENT BY GENDER**  
**(1997 - 2007)**

	1997	1998	1999	2000	2001	2002	2003	2004	2005	2006	2007	CHANGE FROM 2006 TO 2007	
												#	%
<b><u>UM</u></b>													
Men	4,424	4,257	4,274	4,384	4,513	4,637	4,945	4,941	4,940	4,976	5,137	161	3.2
Women	4,761	4,561	4,762	5,095	5,350	5,637	5,961	5,934	5,833	5,819	5,866	47	0.8
Total	9,185	8,818	9,036	9,479	9,863	10,274	10,906	10,875	10,773	10,795	11,003	208	1.9
<b><u>UMA</u></b>													
Men	1,486	1,271	1,413	1,435	1,385	1,290	1,417	1,436	1,449	1,308	1,340	32	2.4
Women	3,747	3,507	3,868	4,033	4,049	4,254	4,245	4,219	4,183	3,885	3,863	(22)	(0.6)
Total	5,233	4,778	5,281	5,468	5,434	5,544	5,662	5,655	5,632	5,193	5,203	10	0.2
<b><u>UMF</u></b>													
Men	717	715	767	738	747	739	761	784	763	775	750	(25)	(3.2)
Women	1,621	1,584	1,597	1,609	1,536	1,517	1,512	1,488	1,444	1,571	1,536	(35)	(2.2)
Total	2,338	2,299	2,364	2,347	2,283	2,256	2,273	2,272	2,207	2,346	2,286	(60)	(2.6)
<b><u>UMFK</u></b>													
Men	283	245	271	297	273	245	293	320	389	392	414	22	5.6
Women	477	486	441	536	541	453	463	622	693	752	882	130	17.3
Total	760	731	712	833	814	698	756	942	1,082	1,144	1,296	152	13.3
<b><u>UMM</u></b>													
Men	355	306	326	319	287	302	331	344	350	293	359	66	22.5
Women	601	542	548	589	593	658	806	890	884	818	927	109	13.3
Total	956	848	874	908	880	960	1,137	1,234	1,234	1,111	1,286	175	15.8
<b><u>UMPI</u></b>													
Men	528	476	499	515	467	463	501	483	503	499	485	(14)	(2.8)
Women	791	730	757	852	820	815	896	944	983	996	930	(66)	(6.6)
Total	1,319	1,206	1,256	1,367	1,287	1,278	1,397	1,427	1,486	1,495	1,415	(80)	(5.4)
<b><u>USM</u></b>													
Men	3,703	3,632	3,698	3,795	3,805	3,884	3,919	3,841	3,915	3,811	3,749	(62)	(1.6)
Women	5,665	5,753	5,942	5,987	6,272	6,426	6,549	6,475	6,368	6,134	6,102	(32)	(0.5)
Total	9,368	9,385	9,640	9,782	10,077	10,310	10,468	10,316	10,283	9,945	9,851	(94)	(0.9)
<b><u>TOTAL</u></b>													
Men	11,496	10,902	11,248	11,483	11,477	11,560	12,167	12,149	12,309	12,054	12,234	180	1.5
Women	17,663	17,163	17,915	18,701	19,161	19,760	20,432	20,572	20,388	19,975	20,106	131	0.7
Total	29,159	28,065	29,163	30,184	30,638	31,320	32,599	32,721	32,697	32,029	32,340	311	1.0

Spring Enrollment - Men



Spring Enrollment - Women

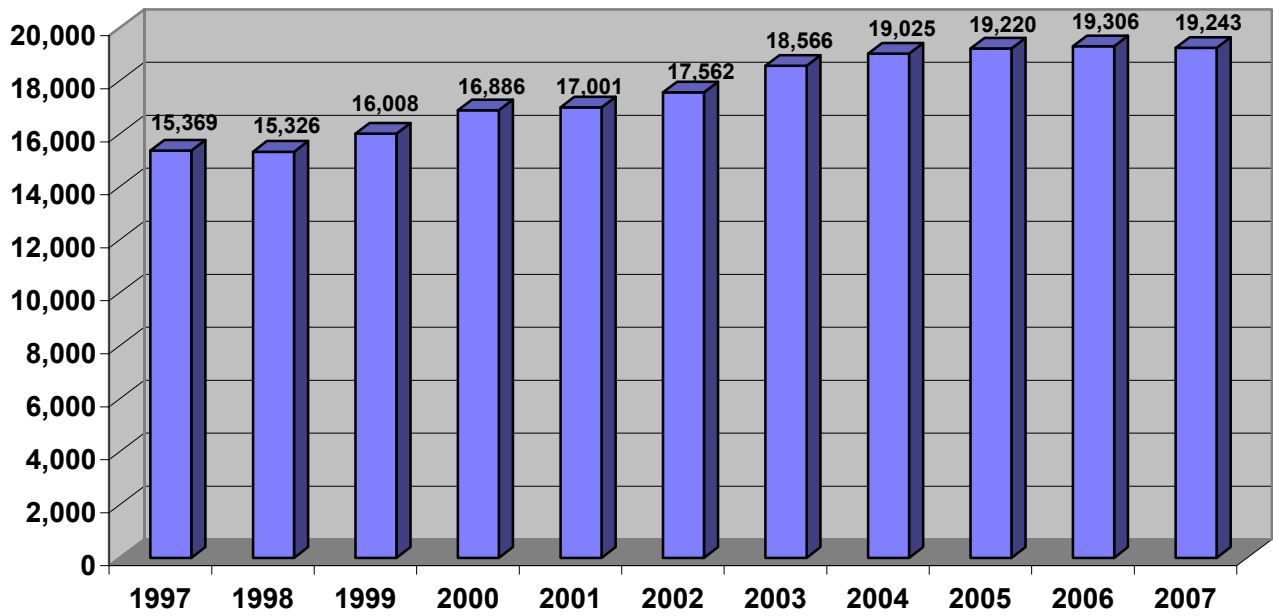


## FULL-TIME AND PART-TIME SPRING HEADCOUNT ENROLLMENT BY UNIVERSITY (1997 - 2007)

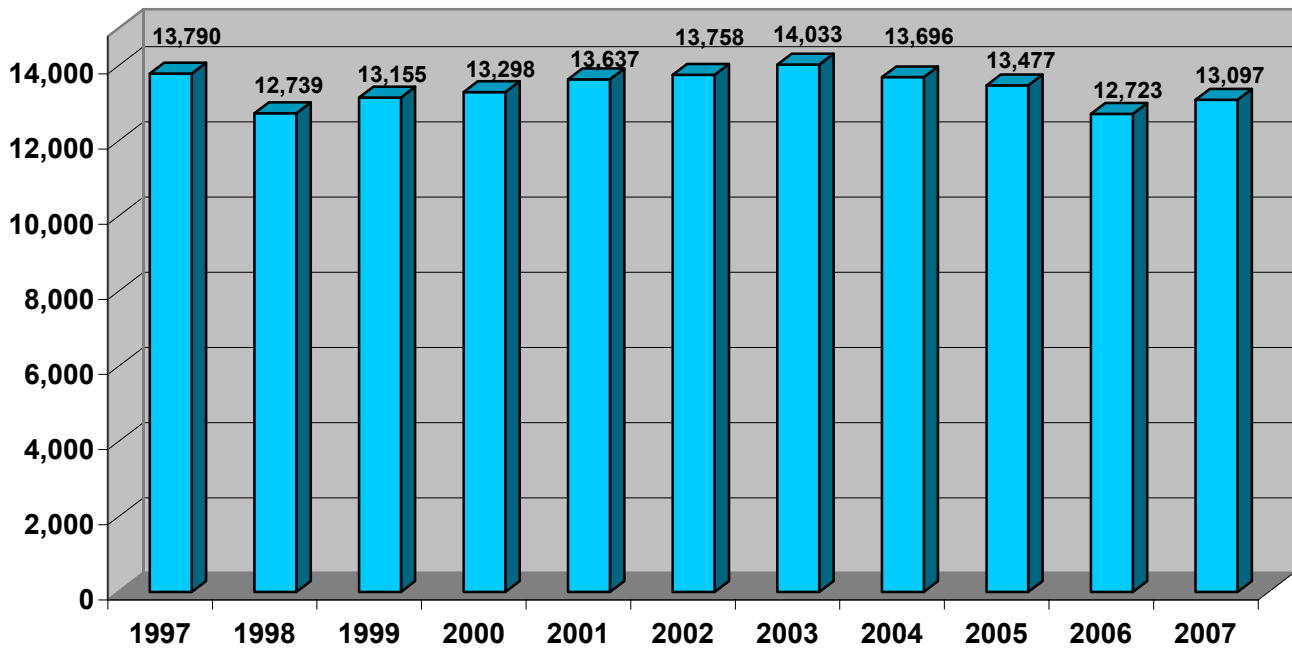
	1997	1998	1999	2000	2001	2002	2003	2004	2005	2006	2007	CHANGE FROM 2006 to 2007	
												#	%
<b>UM</b>													
Full-time	6,488	6,292	6,517	6,869	7,117	7,469	7,876	8,027	8,105	8,245	8,314	69	0.8
Part-time	2,697	2,526	2,519	2,610	2,746	2,805	3,030	2,848	2,668	2,550	2,689	139	5.5
Total	9,185	8,818	9,036	9,479	9,863	10,274	10,906	10,875	10,773	10,795	11,003	208	1.9
<b>UMA</b>													
Full-time	1,189	1,122	1,355	1,514	1,401	1,371	1,506	1,575	1,555	1,448	1,479	31	2.1
Part-time	4,044	3,656	3,926	3,954	4,033	4,173	4,156	4,080	4,077	3,745	3,724	(21)	(0.6)
Total	5,233	4,778	5,281	5,468	5,434	5,544	5,662	5,655	5,632	5,193	5,203	10	0.2
<b>UMF</b>													
Full-time	1,813	1,837	1,909	1,936	1,910	1,920	1,902	1,925	1,897	2,004	1,969	(35)	(1.7)
Part-time	525	462	455	411	373	336	371	347	310	342	317	(25)	(7.3)
Total	2,338	2,299	2,364	2,347	2,283	2,256	2,273	2,272	2,207	2,346	2,286	(60)	(2.6)
<b>UMFK</b>													
Full-time	404	367	425	558	507	466	533	614	676	637	642	5	0.8
Part-time	356	364	287	275	307	232	223	328	406	507	654	147	29.0
Total	760	731	712	833	814	698	756	942	1,082	1,144	1,296	152	13.3
<b>UMM</b>													
Full-time	525	505	500	461	457	508	525	533	476	429	417	(12)	(2.8)
Part-time	431	343	374	447	423	452	612	701	758	682	869	187	27.4
Total	956	848	874	908	880	960	1,137	1,234	1,234	1,111	1,286	175	15.8
<b>UMPI</b>													
Full-time	887	846	853	918	894	831	924	961	1,019	1,013	951	(62)	(6.1)
Part-time	432	360	403	449	393	447	473	466	467	482	464	(18)	(3.7)
Total	1,319	1,206	1,256	1,367	1,287	1,278	1,397	1,427	1,486	1,495	1,415	(80)	(5.4)
<b>USM</b>													
Full-time	4,063	4,357	4,449	4,630	4,715	4,997	5,300	5,390	5,492	5,530	5,471	(59)	(1.1)
Part-time	5,305	5,028	5,191	5,152	5,362	5,313	5,168	4,926	4,791	4,415	4,380	(35)	(0.8)
Total	9,368	9,385	9,640	9,782	10,077	10,310	10,468	10,316	10,283	9,945	9,851	(94)	(0.9)
<b>TOTAL</b>													
Full-time	15,369	15,326	16,008	16,886	17,001	17,562	18,566	19,025	19,220	19,306	19,243	(63)	(0.3)
Part-time	13,790	12,739	13,155	13,298	13,637	13,758	14,033	13,696	13,477	12,723	13,097	374	2.9
Total	29,159	28,065	29,163	30,184	30,638	31,320	32,599	32,721	32,697	32,029	32,340	311	1.0



Spring Full-Time Enrollment



Spring Part-Time Enrollment



**SPRING HEADCOUNT ENROLLMENT BY DEGREE LEVEL**  
**(1997 - 2007)**

	1997	1998	1999	2000	2001	2002	2003	2004	2005	2006	2007	CHANGE FROM 2006 TO 2007	
												#	%
Associate	3,467	3,218	3,335	3,368	3,049	3,051	3,015	2,903	2,648	2,200	2,015	(185)	(8.4)
Baccalaureate	16,824	16,512	17,117	18,083	18,254	18,923	19,807	20,381	20,844	21,032	21,039	7	0.0
Graduate	3,446	3,367	3,479	3,576	3,788	3,943	4,299	4,153	4,132	4,016	4,066	50	1.2
Law	278	283	280	256	229	230	245	270	269	249	257	8	3.2
Non-Degree	5,144	4,685	4,952	4,901	5,318	5,173	5,233	5,014	4,804	4,532	4,963	431	9.5
Total	<u>29,159</u>	<u>28,065</u>	<u>29,163</u>	<u>30,184</u>	<u>30,638</u>	<u>31,320</u>	<u>32,599</u>	<u>32,721</u>	<u>32,697</u>	<u>32,029</u>	<u>32,340</u>	<u>311</u>	1.0

**HEADCOUNT ENROLLMENT BY DEGREE LEVEL AND UNIVERSITY****SPRING 2007**

	<u>Associate</u>		<u>Baccalaureate</u>		<u>Graduate</u>		<u>Law</u>		<u>Non-Degree</u>		<u>Total</u>	
	<u>#</u>	<u>%</u>	<u>#</u>	<u>%</u>	<u>#</u>	<u>%</u>	<u>#</u>	<u>%</u>	<u>#</u>	<u>%</u>	<u>#</u>	<u>%</u>
UM	0	0.0	8,070	73.3	1,997	18.1	0	0.0	936	8.5	11,003	100.0
UMA	1,838	35.3	2,332	44.8	0	0.0	0	0.0	1,033	19.9	5,203	100.0
UMF	0	0.0	2,092	91.5	0	0.0	0	0.0	194	8.5	2,286	100.0
UMFK	84	6.5	672	51.9	0	0.0	0	0.0	540	41.7	1,296	100.0
UMM	38	3.0	486	37.8	0	0.0	0	0.0	762	59.3	1,286	100.0
UMPI	35	2.5	1,097	77.5	0	0.0	0	0.0	283	20.0	1,415	100.0
USM	<u>20</u>	0.2	<u>6,290</u>	63.9	<u>2,069</u>	21.0	<u>257</u>	2.6	<u>1,215</u>	12.3	<u>9,851</u>	100.0
TOTAL	<u>2,015</u>	6.2	<u>21,039</u>	65.1	<u>4,066</u>	12.6	<u>257</u>	0.8	<u>4,963</u>	15.3	<u>32,340</u>	100.0

Note: Percentages may not add to 100.0 due to rounding.

**SPRING FIRST-TIME FIRST-YEAR STUDENT ENROLLMENT  
(1988 - 2007)**

	<u>UM</u>		<u>UMA</u>		<u>UMF</u>		<u>UMFK</u>		<u>UMM</u>		<u>UMPI</u>		<u>USM</u>		<u>TOTAL</u>	
1988	96		104		35		12		25		16		130		418	
1989	100		127		31		22		28		27		124		459	
1990	158		122		37		11		43		33		137		541	
1991	145		176		52		12		31		40		163		619	
1992	89		154		32		13		25		16		132		461	
1993	110		194		39		18		25		36		169		591	
1994	88		225		38		15		21		24		128		539	
1995	75		152		23		14		22		27		125		438	
1996	42		206		33		7		24		30		100		442	
1997	46		239		37		15		28		38		147		550	
1998	42		197		31		8		23		22		76		399	
1999	59		226		39		12		23		45		107		511	
2000	41		224		26		12		20		39		119		481	
2001	41		192		16		12		15		42		106		424	
2002	59		270		24		13		6		52		108		532	
2003	47		298		20		18		12		27		78		500	
2004	51		230		23		24		9		36		59		432	
2005	42		213		18		19		15		29		73		409	
2006	48		181		31		11		11		28		72		382	
2007	42		173		8		8		13		23		59		326	
Change from 2006 to 2007	#	%	#	%	#	%	#	%	#	%	#	%	#	%	#	%
	(6)	(12.5)	(8)	(4.4)	(23)	(74.2)	(3)	(27.3)	2	18.2	(5)	(17.9)	(13)	(18.1)	(56)	(14.7)

**SPRING TRANSFER STUDENT ENROLLMENT  
(1988 - 2007)**

	<u>UM</u>		<u>UMA</u>		<u>UMF</u>		<u>UMFK</u>		<u>UMM</u>		<u>UMPI</u>		<u>USM</u>		<u>TOTAL</u>	
1988	144		110		69		4		18		47		299		691	
1989	136		110		77		16		29		63		325		756	
1990	210		185		95		13		36		60		363		962	
1991	281		195		102		12		29		50		437		1,106	
1992	235		170		61		27		46		80		381		1,000	
1993	227		245		139		33		32		70		381		1,127	
1994	185		183		109		31		27		65		281		881	
1995	185		202		88		23		35		51		295		879	
1996	160		228		80		30		39		59		316		912	
1997	203		214		97		28		37		55		307		941	
1998	203		182		66		30		30		49		313		873	
1999	206		260		79		36		20		61		294		956	
2000	208		300		99		69		36		68		361		1,141	
2001	173		275		65		45		26		55		350		989	
2002	196		264		75		70		37		30		357		1,029	
2003	250		307		76		52		36		83		373		1,177	
2004	193		271		74		64		29		93		397		1,121	
2005	196		283		78		65		29		101		340		1,092	
2006	239		255		85		70		35		84		326		1,094	
2007	199		259		54		60		56		74		316		1,018	
Change from 2006 to 2007	#	%	#	%	#	%	#	%	#	%	#	%	#	%	#	%
	(40)	(16.7)	4	1.6	(31)	(36.5)	(10)	(14.3)	21	60.0	(10)	(11.9)	(10)	(3.1)	(76)	(6.9)

**SPRING HEADCOUNT ENROLLMENT**  
**BY**  
**COUNTY OF RESIDENCE**  
**(2003 - 2007)**

	2003		2004		2005		2006		2007		CHANGE FROM 2006 TO 2007	
	#	%	#	%	#	%	#	%	#	%	#	%
<b><u>IN-STATE</u></b>												
Androscoggin	2,109	6.5	2,107	6.4	2,179	6.7	2,010	6.3	1,879	5.8	(131)	(6.5)
Aroostook	2,091	6.4	2,125	6.5	2,162	6.6	2,182	6.8	2,189	6.8	7	0.3
Cumberland	5,837	17.9	5,787	17.7	5,693	17.4	5,671	17.7	5,676	17.6	5	0.1
Franklin	812	2.5	759	2.3	757	2.3	701	2.2	712	2.2	11	1.6
Hancock	1,080	3.3	1,076	3.3	1,106	3.4	1,080	3.4	1,110	3.4	30	2.8
Kennebec	3,158	9.7	3,101	9.5	3,061	9.4	3,089	9.6	2,996	9.3	(93)	(3.0)
Knox	905	2.8	953	2.9	961	2.9	972	3.0	1,002	3.1	30	3.1
Lincoln	639	2.0	651	2.0	676	2.1	671	2.1	693	2.1	22	3.3
Oxford	1,063	3.3	1,033	3.2	1,119	3.4	1,042	3.3	1,065	3.3	23	2.2
Penobscot	4,689	14.4	4,668	14.3	4,703	14.4	4,442	13.9	4,715	14.6	273	6.1
Piscataquis	387	1.2	356	1.1	354	1.1	351	1.1	294	0.9	(57)	(16.2)
Sagadahoc	785	2.4	837	2.6	791	2.4	815	2.5	783	2.4	(32)	(3.9)
Somerset	735	2.3	711	2.2	767	2.3	764	2.4	878	2.7	114	14.9
Waldo	849	2.6	868	2.7	840	2.6	847	2.6	880	2.7	33	3.9
Washington	978	3.0	893	2.7	832	2.5	813	2.5	872	2.7	59	7.3
York	2,806	8.6	2,827	8.6	2,800	8.6	2,711	8.5	2,680	8.3	(31)	(1.1)
Subtotal	28,923	88.7	28,752	87.9	28,801	88.1	28,161	87.9	28,424	87.9	263	0.9
<b><u>OUT-OF-STATE</u></b>	3,676	11.3	3,969	12.1	3,896	11.9	3,868	12.1	3,916	12.1	48	1.2
<b><u>TOTAL</u></b>	<u>32,599</u>	<u>100.0</u>	<u>32,721</u>	<u>100.0</u>	<u>32,697</u>	<u>100.0</u>	<u>32,029</u>	<u>100.0</u>	<u>32,340</u>	<u>100.0</u>	<u>311</u>	<u>1.0</u>
<b><u>INTERNATIONAL</u></b>	930	2.9	1,033	3.2	1,030	3.2	972	3.0	992	3.1	20	2.1

NOTE: Detail percentages may not add to total due to rounding.

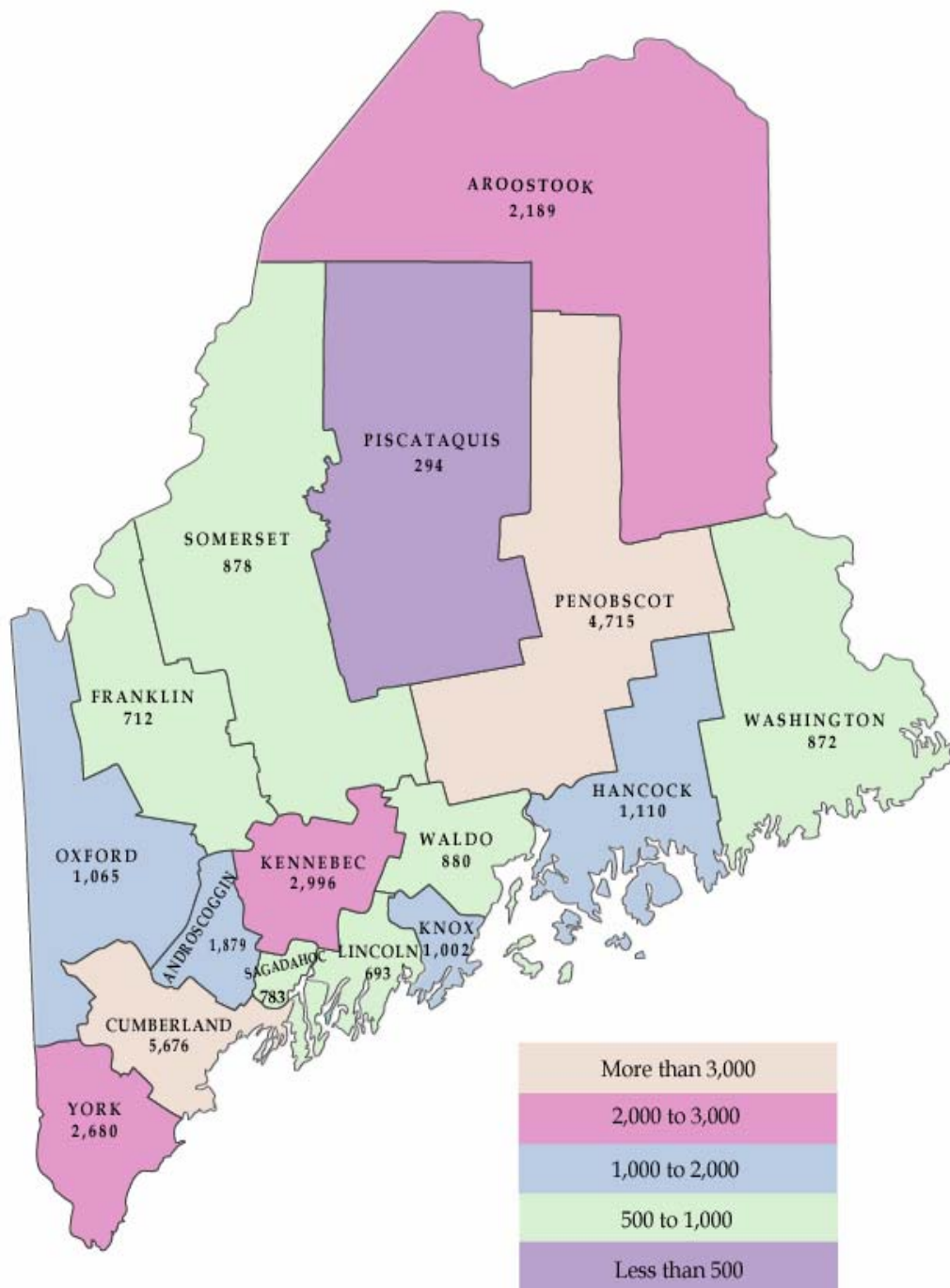
**SPRING HEADCOUNT ENROLLMENT**  
**BY**  
**COUNTY OF RESIDENCE**  
**(1997 - 2002)**

	1997		1998		1999		2000		2001		2002	
	#	%	#	%	#	%	#	%	#	%	#	%
<b><u>IN-STATE</u></b>												
Androscoggin	1,910	6.6	1,806	6.6	1,954	6.7	1,910	6.3	2,045	6.7	2,074	6.6
Aroostook	2,041	7.0	1,957	7.0	2,061	7.1	2,113	7.0	2,053	6.7	2,014	6.4
Cumberland	5,660	19.4	5,494	19.7	5,466	18.7	5,463	18.1	5,451	17.8	5,634	18.0
Franklin	806	2.8	764	2.7	778	2.7	789	2.6	824	2.7	818	2.6
Hancock	1,021	3.5	961	3.4	1,015	3.5	1,084	3.6	1,031	3.4	1,052	3.4
Kennebec	2,663	9.1	2,539	9.1	2,681	9.2	2,844	9.4	2,873	9.4	2,945	9.4
Knox	717	2.5	674	2.4	743	2.5	803	2.7	853	2.8	900	2.9
Lincoln	577	2.0	591	2.1	631	2.2	614	2.0	596	1.9	648	2.1
Oxford	802	2.8	764	2.8	818	2.8	872	2.9	922	3.0	984	3.1
Penobscot	4,183	14.3	4,160	14.4	4,254	14.6	4,497	14.9	4,453	14.5	4,558	14.6
Piscataquis	354	1.2	339	1.2	343	1.2	373	1.2	372	1.2	391	1.2
Sagadahoc	604	2.1	601	2.1	664	2.3	673	2.2	706	2.3	743	2.4
Somerset	703	2.4	683	2.4	685	2.3	687	2.3	678	2.2	688	2.2
Waldo	484	1.7	502	1.7	562	1.9	584	1.9	737	2.4	768	2.5
Washington	995	3.4	932	3.2	917	3.1	988	3.3	957	3.1	956	3.1
York	2,633	9.0	2,440	8.9	2,513	8.6	2,568	8.5	2,607	8.5	2,664	8.5
Subtotal	26,153	89.7	25,207	89.4	26,085	89.4	26,862	89.0	27,158	88.6	27,837	88.9
<b><u>OUT-OF-STATE</u></b>	3,006	10.3	2,858	10.2	3,078	10.6	3,322	11.0	3,480	11.4	3,483	11.1
<b><u>TOTAL</u></b>	<u>29,159</u>	<u>100.0</u>	<u>28,065</u>	<u>100.0</u>	<u>29,163</u>	<u>100.0</u>	<u>30,184</u>	<u>100.0</u>	<u>30,638</u>	<u>100.0</u>	<u>31,320</u>	<u>100.0</u>
<b><u>INTERNATIONAL</u></b>	711	2.4	649	2.3	771	2.6	901	3.0	912	3.0	863	2.8

NOTE: Detail percentages may not add to total due to rounding.

### SPRING 2007 Headcount Enrollment

By County of Residence



**HEADCOUNT ENROLLMENT BY STATE OF RESIDENCE\*****SPRING 2007**

	<u>#</u>	<u>%</u>		<u>#</u>	<u>%</u>
ALASKA	8	0.3	NEBRASKA	3	0.1
ALABAMA	2	0.1	NEVADA	2	0.1
ARKANSAS	2	0.1	NEW HAMPSHIRE	442	15.1
ARIZONA	12	0.4	NEW JERSEY	111	3.8
CALIFORNIA	30	1.0	NEW MEXICO	3	0.1
COLORADO	18	0.6	NEW YORK	151	5.2
CONNECTICUT	227	7.8	NORTH CAROLINA	17	0.6
DELAWARE	6	0.2	NORTH DAKOTA	1	0.0
DISTRICT OF COLUMBIA	1	0.0	OHIO	27	0.9
FLORIDA	38	1.3	OKLAHOMA	0	0.0
GEORGIA	10	0.3	OREGON	7	0.2
HAWAII	5	0.2	PENNSYLVANIA	74	2.5
IDAHO	5	0.2	RHODE ISLAND	58	2.0
ILLINOIS	35	1.2	SOUTH CAROLINA	7	0.2
INDIANA	15	0.5	SOUTH DAKOTA	1	0.0
IOWA	8	0.3	TENNESSEE	6	0.2
KANSAS	1	0.0	TEXAS	16	0.5
KENTUCKY	5	0.2	UTAH	3	0.1
LOUISIANA	1	0.0	VERMONT	201	6.9
MARYLAND	28	1.0	VIRGINIA	36	1.2
MASSACHUSETTS	664	22.7	WASHINGTON	16	0.5
MICHIGAN	28	1.0	WEST VIRGINIA	3	0.1
MINNESOTA	27	0.9	WISCONSIN	10	0.3
MISSISSIPPI	0	0.0	WYOMING	3	0.1
MISSOURI	7	0.2	OTHER	538	18.4
MONTANA	5	0.2	TOTAL	<u>2,924</u> *	<u>100.0</u>

\* Excludes 992 international students of which 638 are from Canada.

NOTE: Percentages may not add to 100.0 due to rounding.



**HEADCOUNT ENROLLMENT BY COUNTRY OF RESIDENCE****SPRING 2007**

	<u>#</u>	<u>%</u>
CANADA	638	64.3
PEOPLES REPUBLIC OF CHINA	57	5.7
INDIA	34	3.4
SAUDI ARABIA	17	1.7
UNITED KINGDOM	15	1.5
NEPAL	14	1.4
RUSSIA	12	1.2
OTHER FOREIGN COUNTRIES*	<u>205</u>	<u>20.7</u>
TOTAL	<u>992</u>	<u>100.0</u>

\*Includes foreign countries with less than 10 students attending a University of Maine System campus.

NOTE: Percentages may not add to 100.0 due to rounding.

**SPRING 2007 DISTANCE LEARNING ENROLLMENT**  
**ALL STUDENTS TAKING DISTANCE LEARNING COURSES**

The table below provides a summary profile of students taking distance education courses (i.e. through interactive television, the internet or another delivery mode). Students taking an ITV course at the broadcast sites, i.e. the classroom at which the course originated, are excluded as the broadcast course represents a traditional university course that would have historically been offered whether or not ITV existed.

	<u>UM</u>	<u>UMA</u>	<u>UMF*</u>	<u>UMFK</u>	<u>UMM</u>	<u>UMPI</u>	<u>USM</u>	<u>TOTAL</u>
TOTAL	389	1,730	15	408	570	70	233	3,415
Associate	0	494	0	1	2	0	0	497
Freshman	3	146	0	2	0	0	0	151
Sophomore	11	137	0	0	1	0	3	152
Junior	21	210	1	1	2	2	3	240
Senior	31	294	2	2	3	2	11	345
Graduate	12	0	0	0	0	0	60	72
Law	0	0	0	0	0	0	0	0
Non-Degree	311	449	12	402	562	66	156	1,958
Full-Time	60	395	1	6	5	1	24	492
Part-Time	329	1,335	14	402	565	69	209	2,923
In-State	378	1,716	15	396	553	67	228	3,353
Out-of-State	11	14	0	12	17	3	5	62
Men	104	371	0	90	130	10	38	743
Women	285	1,359	15	318	440	60	195	2,672
ITV Credit Hours	1,346	8,323	60	1,445	2,010	222	751	14,157
F. T. E.	91	555	4	96	134	15	59	954
AGE*								
22 or less	109	365	0	71	96	7	35	683
23 to 30	118	489	1	128	172	25	48	981
31 to 40	71	448	5	103	136	23	54	840
41 to 50	60	303	7	71	115	13	57	626
51 or more	31	124	2	35	51	2	39	284
*Age ranges may not add to total headcount due to missing birth dates.								
Only Distance Education Headcount	<u>319</u>	<u>969</u>	<u>12</u>	<u>400</u>	<u>559</u>	<u>66</u>	<u>198</u>	<u>2,523</u>

● This table shows **all** students taking at least one distance education course, whether they are taking only distance education courses or are taking distance education courses and at least one non-distance education course.

● The students shown in the above table have already been counted in the enrollment figures in all other tables. These numbers should not be added to previously reported university enrollment figures.

● Only distance education headcount enrollment students are those students taking only distance learning courses and no other courses.

● Effective with the Fall 1995 semester, students enrolled in distance learning receive site courses are counted as part of the enrollment of the university that is broadcasting the course, regardless of where the receive sites are located.

\*UMF: Undergraduate Credit Hours/16 + Graduate Credit Hours/9 = FTE