

# SUMMARY OF SPRING 2011 ENROLLMENTS

February 18, 2011



*Maine's  
Public  
Universities*

---

UNIVERSITY OF MAINE SYSTEM

---

## SUMMARY OF SPRING 2011 ENROLLMENTS

---

### INTRODUCTION

This report provides summary information regarding University enrollments. Much of this report has been revised to display a greater variety of data. Institutional level detail corresponding to this report can be found at <http://www.maine.edu/system/ppa/EnrollmentSummaries.php>.

### TABLE OF CONTENTS

|  | <u>PAGE</u> |
|--|-------------|
| Highlights                                 | 1           |
| By Headcount                               | 2           |
| By FTE (Full-time Equivalent)              | 3           |
| Fall-to-Spring FTE Enrollment              | 4           |
| By Residence, Gender, Full-time, Part-time | 5           |
| By Degree Level                            | 6           |
| By Race/Ethnicity                          | 7           |
| By Age                                     | 8           |
| By County, State, Country                  | 9           |
| By First-time First-year and Transfer      | 10          |
| By Credit Hours by Mode                    | 11          |
| By Distance Education by Degree Level      | 12          |

---

## **SUMMARY OF SPRING 2011 ENROLLMENTS**

---

### **HIGHLIGHTS**

#### **Headcount Enrollment**

- Spring 2011 headcount enrollment for Maine's public universities was 30,080 and reflects an annual decline of -2.2% in total enrollment as compared to last Spring of 30,771.
- In-state enrollment comprises 87% of the student body. In-state enrollment decreased annually by -3.2% and out-of-state enrollment increased by 5.0%.
- Women still make up the majority of students within UMS, 60%. Male enrollment decreased by -1.6% and female enrollment declined -2.7%.
- Full-time students decreased by -0.9% and part-time students declined by -4.5%.

#### **FTE Enrollment**

- FTE enrollment decreased by 1.1% from 22,305 to 22,061. The fall-to-spring FTE enrollment ratio decreased from 94.1% to 93.7%.

#### **Degree level Enrollment**

- 71% of students are pursuing a baccalaureate degree, followed by 12% pursuing masters, certificate of advanced study, or doctoral degrees. Nearly 10% are undergraduate non-degree students and 6% are associate degree students. The final 1% of the student body is law students.

#### **Enrollment by Age**

- 50% of part-time students are between the ages of 30 and 64. 76% of full-time students are between the ages of 18 and 25.

#### **Enrollment by Residence**

- Cumberland, Penobscot, and Kennebec county residents make up more than half of the in-state student body. The top five states represented are Massachusetts, New Hampshire, Connecticut, Vermont, and New York. Canada has 299 students enrolled followed by 75 students from China.

#### **Incoming Student & Transfer Enrollment**

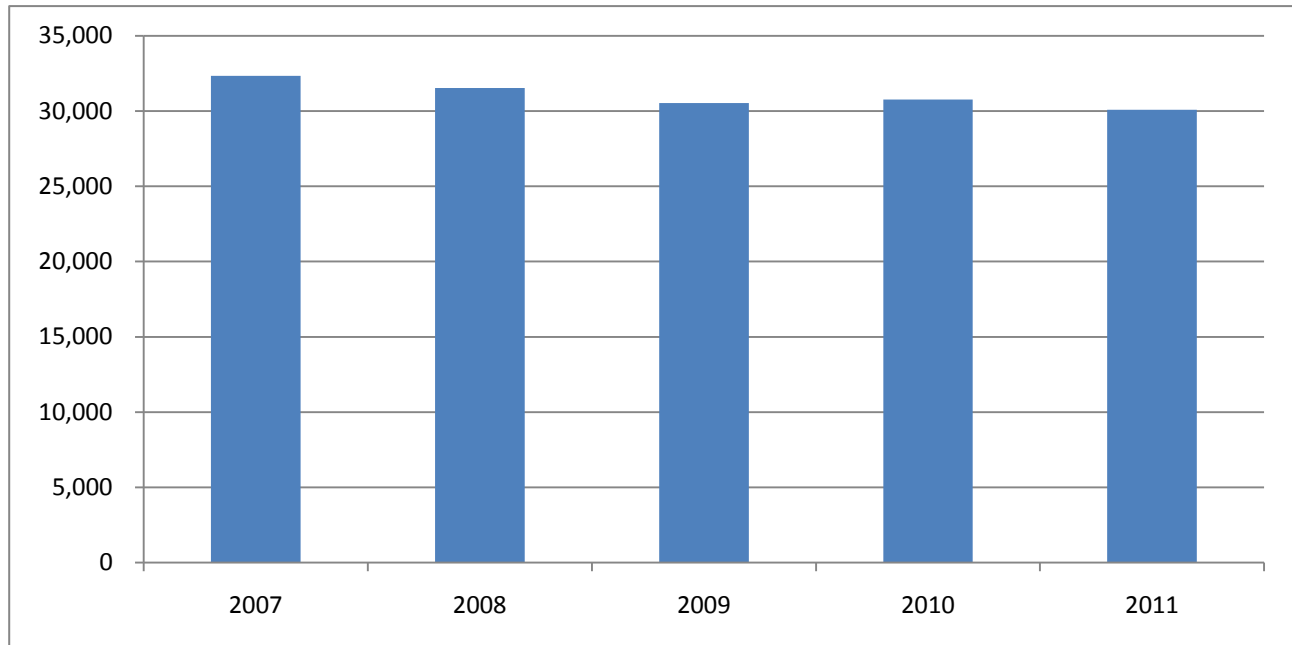
- First-time, first-year in-state students are up by 4.5% from 375 in Spring 2010 to 392 in Spring 2011.
- Maine Community College Students grew by 45% from Spring 2010.

#### **Distance Education Enrollment**

- 17% of all credit hours are taught via distance education.
- Distance online credit hours make up 67% of all distance education delivery modes, followed by distance ITV at 16%, 14% by distance onsite, and 3% of distance video conferencing.

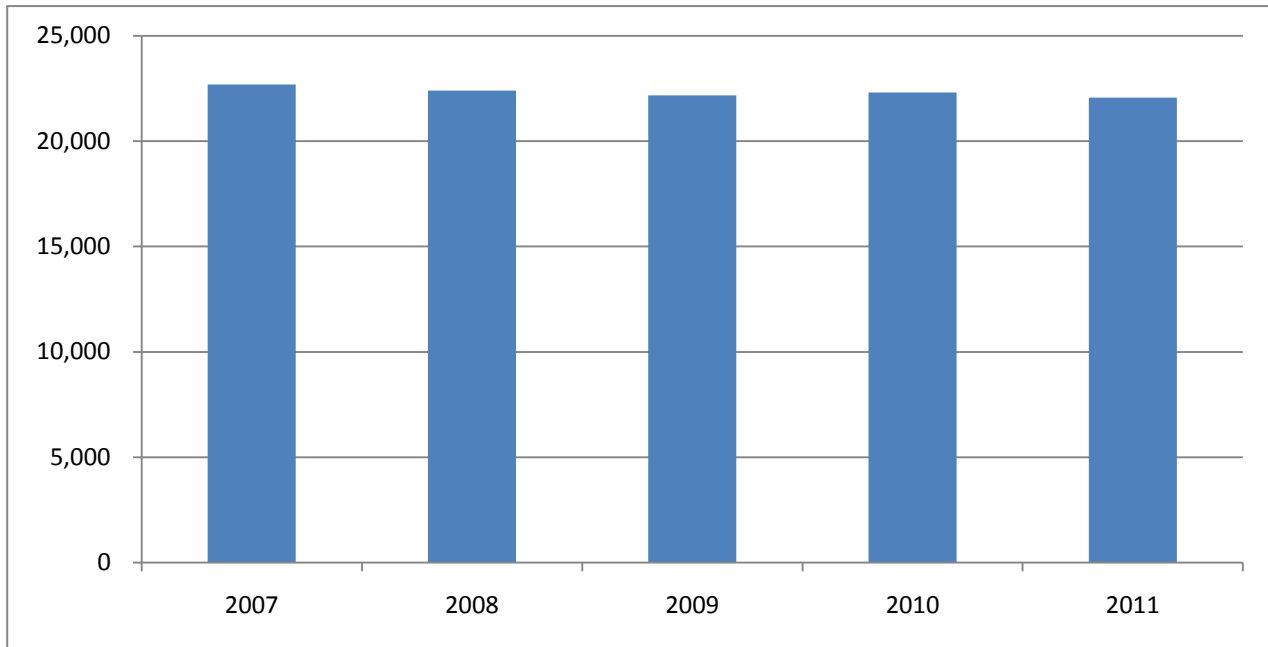
## Opening Spring Headcount Enrollment (2007 - 2011)

|              | 2007   | 2008   | 2009   | 2010   | 2011   | % of Total | % Change |        |
|--------------|--------|--------|--------|--------|--------|------------|----------|--------|
|              |        |        |        |        |        |            | 1-Year   | 5-year |
| <b>UM</b>    | 11,003 | 11,199 | 11,114 | 10,979 | 10,551 | 35.1%      | -3.9%    | -4.1%  |
| <b>UMA</b>   | 5,203  | 4,865  | 4,755  | 4,962  | 4,920  | 16.4%      | -0.8%    | -5.4%  |
| <b>UMF</b>   | 2,286  | 2,159  | 2,119  | 2,144  | 2,166  | 7.2%       | 1.0%     | -5.2%  |
| <b>UMFK</b>  | 1,296  | 1,223  | 1,052  | 1,178  | 1,122  | 3.7%       | -4.8%    | -13.4% |
| <b>UMM</b>   | 1,286  | 1,170  | 1,050  | 1,027  | 855    | 2.8%       | -16.7%   | -33.5% |
| <b>UMPI</b>  | 1,415  | 1,377  | 1,296  | 1,299  | 1,440  | 4.8%       | 10.9%    | 1.8%   |
| <b>USM</b>   | 9,851  | 9,532  | 9,145  | 9,182  | 9,026  | 30.0%      | -1.7%    | -8.4%  |
| <b>TOTAL</b> | 32,340 | 31,525 | 30,531 | 30,771 | 30,080 | 100.0%     | -2.2%    | -7.0%  |



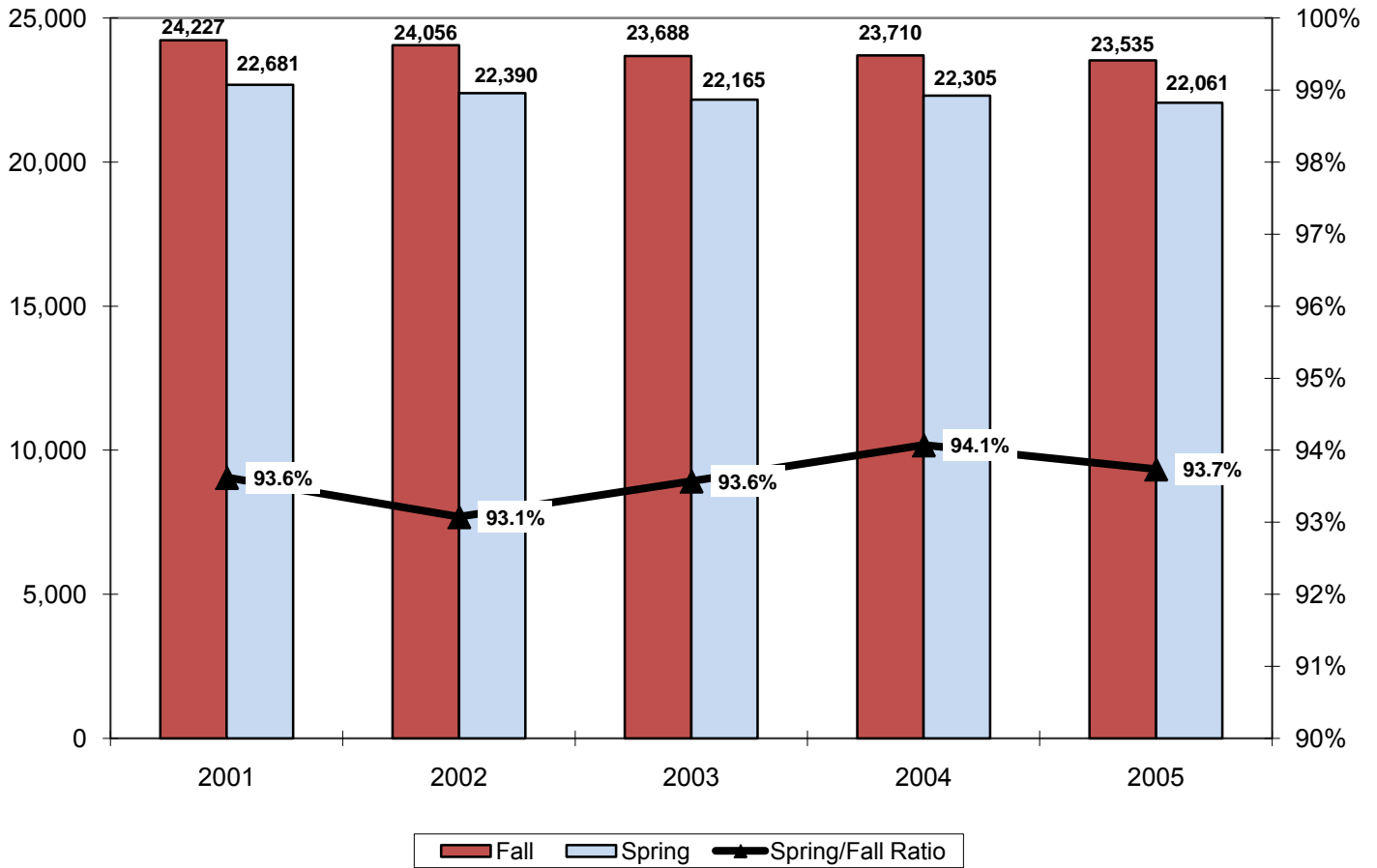
## Opening Spring FTE Enrollment\* (2007 - 2011)

|              | 2007   | 2008   | 2009   | 2010   | 2011   | % of Total | % Change |        |
|--------------|--------|--------|--------|--------|--------|------------|----------|--------|
|              |        |        |        |        |        |            | 1-Year   | 5-year |
| <b>UM</b>    | 8,819  | 8,983  | 9,066  | 8,917  | 8,662  | 39.3%      | -2.9%    | -1.8%  |
| <b>UMA</b>   | 2,623  | 2,493  | 2,513  | 2,698  | 2,749  | 12.5%      | 1.9%     | 4.8%   |
| <b>UMF</b>   | 1,936  | 1,846  | 1,834  | 1,851  | 1,847  | 8.4%       | -0.2%    | -4.6%  |
| <b>UMFK</b>  | 847    | 821    | 671    | 694    | 687    | 3.1%       | -1.0%    | -18.9% |
| <b>UMM</b>   | 629    | 594    | 576    | 583    | 520    | 2.4%       | -10.7%   | -17.2% |
| <b>UMPI</b>  | 1,094  | 1,019  | 956    | 941    | 967    | 4.4%       | 2.8%     | -11.5% |
| <b>USM</b>   | 6,734  | 6,634  | 6,549  | 6,621  | 6,629  | 30.0%      | 0.1%     | -1.6%  |
| <b>TOTAL</b> | 22,681 | 22,390 | 22,165 | 22,305 | 22,061 | 100.0%     | -1.1%    | -2.7%  |



\* The formula for calculating Fall FTE (for all campuses except UMF starting in Fall 2006) is as follows:  
 Fall Undergraduate Credit Hours/15 + Fall Professional (Law) Credit Hours/15 + Fall Graduate Credit Hours/9 = Fall FTE  
 +UMF: Fall Undergraduate Credit Hours/16 + Fall Graduate Credit Hours/9 = Fall FTE  
 Totals may not add to detail due to rounding  
 Note: Percentages are rounded

## FALL-TO-SPRING FTE ENROLLMENT\* (2007 - 2011)\*\*



|                   | 2007   | 2008   | 2009   | 2010   | 2011   |
|-------------------|--------|--------|--------|--------|--------|
| <b>Fall</b>       | 24,227 | 24,056 | 23,689 | 23,710 | 23,535 |
| <b>Spring</b>     | 22,681 | 22,390 | 22,165 | 22,305 | 22,061 |
| <b>Difference</b> | 1,545  | 1,666  | 1,524  | 1,405  | 1,474  |
| <b>Ratio</b>      | 93.6%  | 93.1%  | 93.6%  | 94.1%  | 93.7%  |

\* The formula for calculating FTE (for all campuses except UMF beginning AY07) is as follows:  
 $\text{Undergraduate Credit Hours}/15 + \text{Professional (Law) Credit Hours}/15 + \text{Graduate Credit Hours}/9 = \text{FTE}$

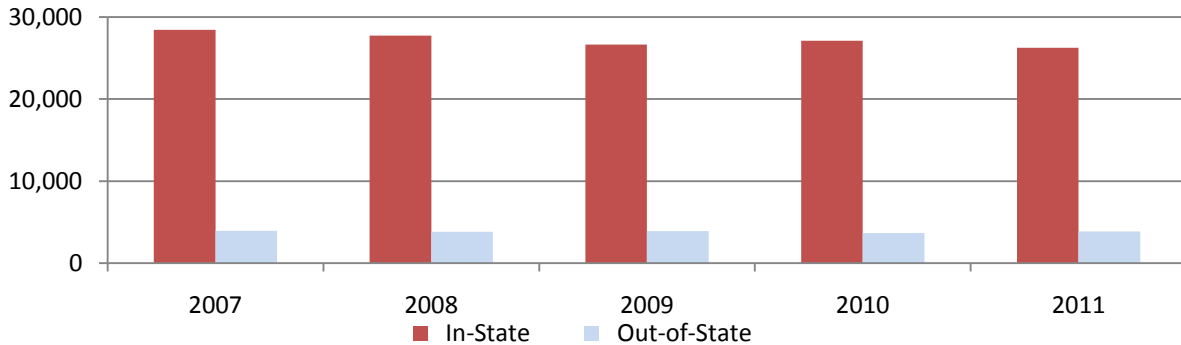
†UMF:  $\text{Undergraduate Credit Hours}/16 + \text{Graduate Credit Hours}/9 = \text{FTE}$

Totals may not add to detail due to rounding

\*\*Years 2007-2011 are academic years, i.e. Fall 2009 is in academic year 2010.

### Headcount Enrollment by Residence

|              | 2007          | 2008          | 2009          | 2010          | 2011          | % of Total    | % Change     |              |
|--------------|---------------|---------------|---------------|---------------|---------------|---------------|--------------|--------------|
|              |               |               |               |               |               |               | 1-Year       | 5-year       |
| In-State     | 28,424        | 27,722        | 26,630        | 27,116        | 26,241        | 87.2%         | -3.2%        | -7.7%        |
| Out-of-State | 3,916         | 3,803         | 3,901         | 3,655         | 3,839         | 12.8%         | 5.0%         | -2.0%        |
| <b>Total</b> | <b>32,340</b> | <b>31,525</b> | <b>30,531</b> | <b>30,771</b> | <b>30,080</b> | <b>100.0%</b> | <b>-2.2%</b> | <b>-7.0%</b> |



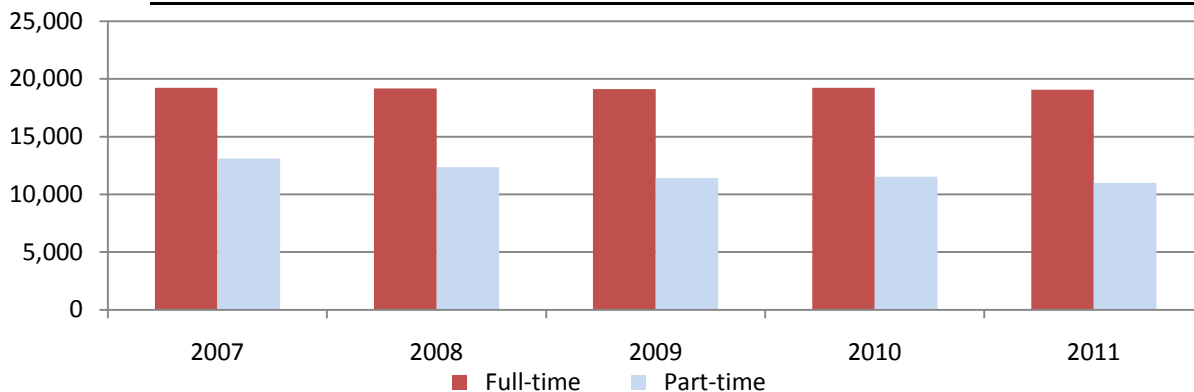
### Headcount Enrollment by Gender

|              | 2007          | 2008          | 2009          | 2010          | 2011          | % of Total    | % Change     |              |
|--------------|---------------|---------------|---------------|---------------|---------------|---------------|--------------|--------------|
|              |               |               |               |               |               |               | 1-Year       | 5-year       |
| Men          | 12,234        | 12,147        | 12,178        | 12,332        | 12,137        | 40.3%         | -1.6%        | -0.8%        |
| Women        | 20,106        | 19,378        | 18,353        | 18,439        | 17,943        | 59.7%         | -2.7%        | -10.8%       |
| <b>Total</b> | <b>32,340</b> | <b>31,525</b> | <b>30,531</b> | <b>30,771</b> | <b>30,080</b> | <b>100.0%</b> | <b>-2.2%</b> | <b>-7.0%</b> |



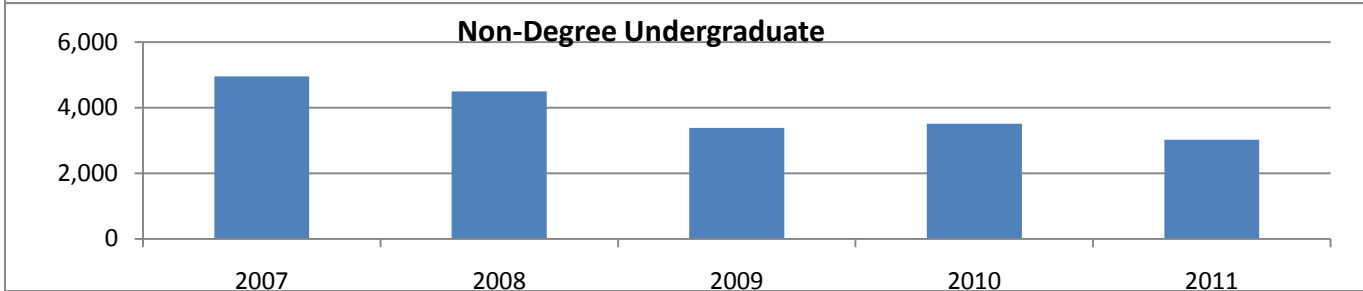
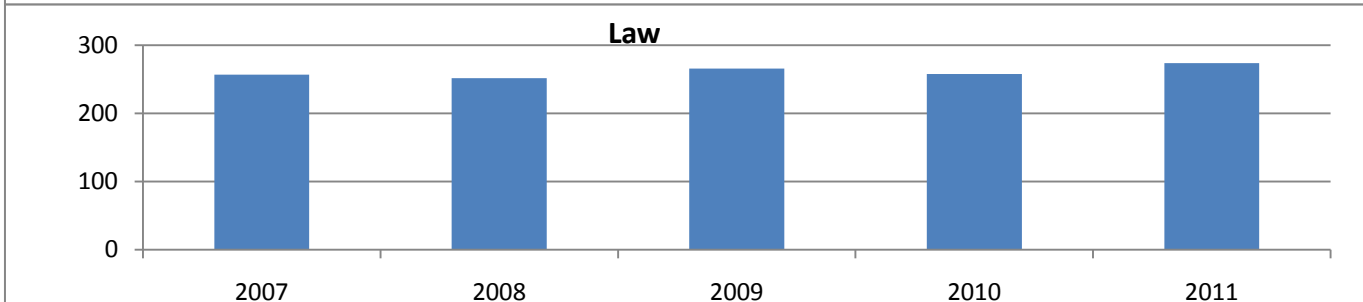
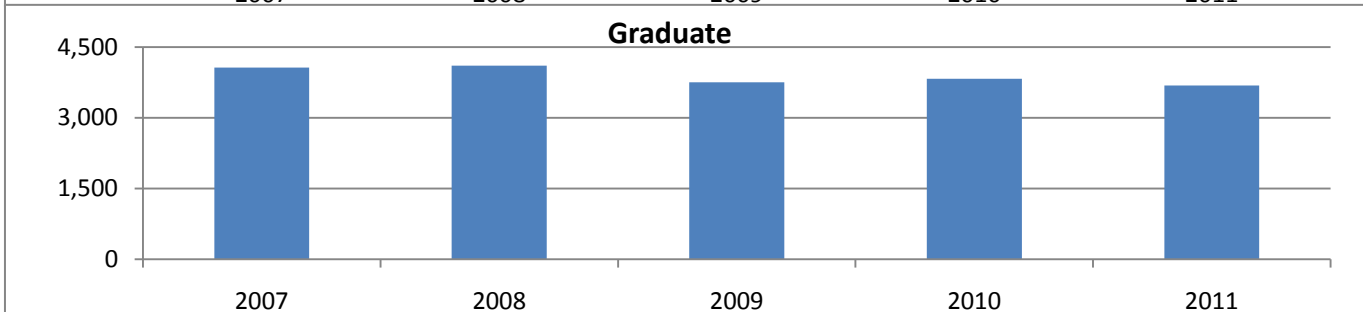
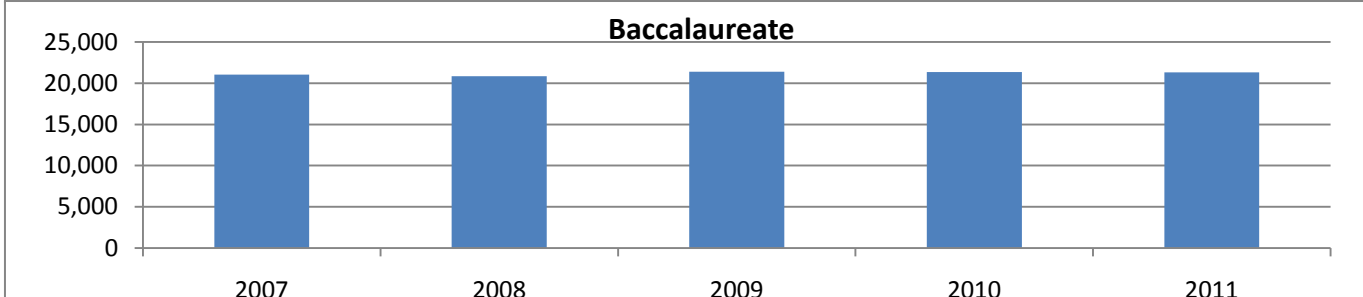
### Full-Time and Part-Time Headcount Enrollment

|              | 2007          | 2008          | 2009          | 2010          | 2011          | % of Total    | % Change     |              |
|--------------|---------------|---------------|---------------|---------------|---------------|---------------|--------------|--------------|
|              |               |               |               |               |               |               | 1-Year       | 5-year       |
| Full-time    | 19,243        | 19,174        | 19,129        | 19,240        | 19,072        | 63.4%         | -0.9%        | -0.9%        |
| Part-time    | 13,097        | 12,351        | 11,402        | 11,531        | 11,008        | 36.6%         | -4.5%        | -16.0%       |
| <b>Total</b> | <b>32,340</b> | <b>31,525</b> | <b>30,531</b> | <b>30,771</b> | <b>30,080</b> | <b>100.0%</b> | <b>-2.2%</b> | <b>-7.0%</b> |



## Headcount by Degree Level

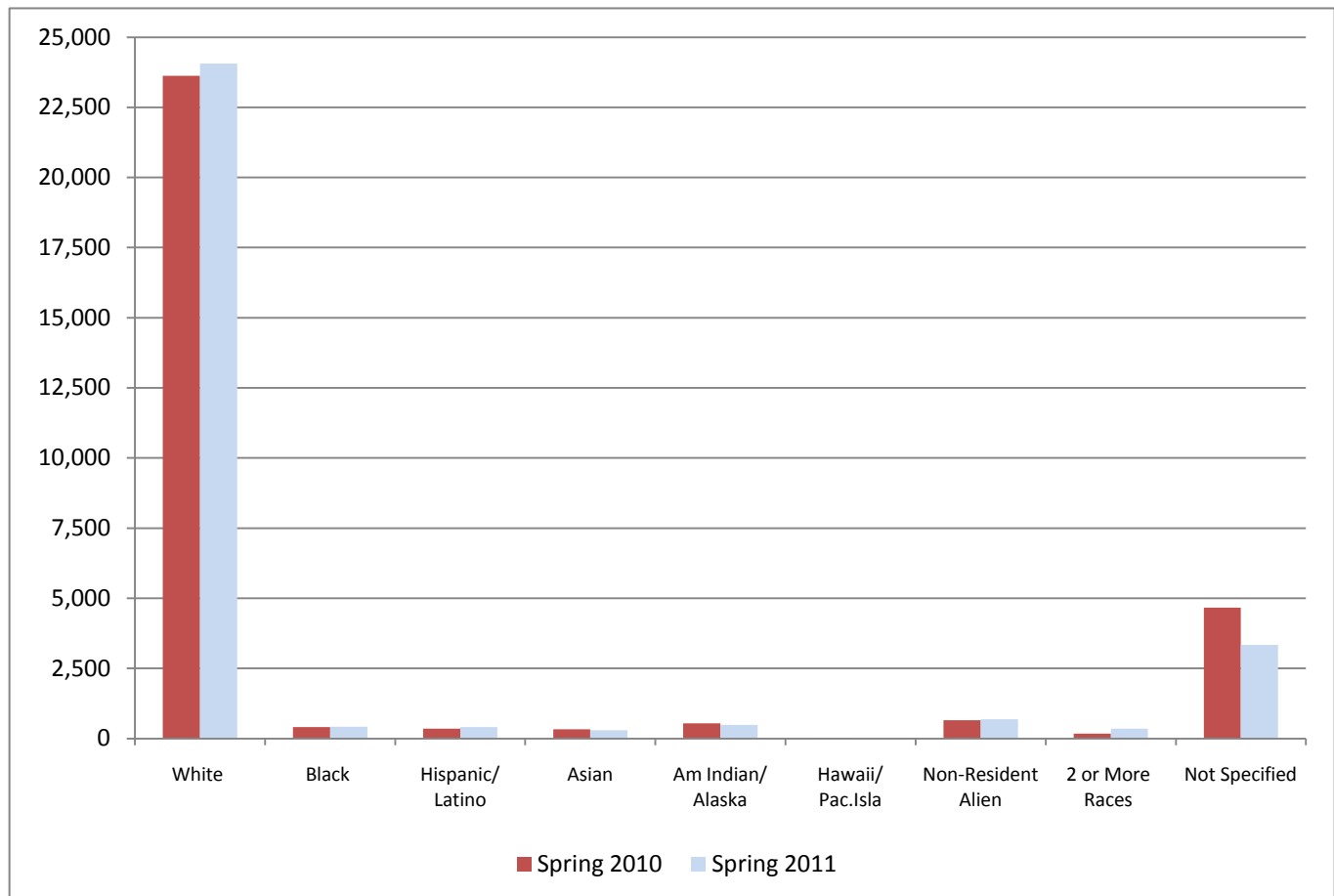
|                      | 2007   | 2008   | 2009   | 2010   | 2011   | % of Total | % Change |        |
|----------------------|--------|--------|--------|--------|--------|------------|----------|--------|
|                      |        |        |        |        |        |            | 1-Year   | 5-year |
| <b>Associate</b>     | 2,015  | 1,795  | 1,717  | 1,828  | 1,767  | 5.9%       | -3.3%    | -12.3% |
| <b>Baccalaureate</b> | 21,039 | 20,872 | 21,406 | 21,348 | 21,327 | 70.9%      | -0.1%    | 1.4%   |
| <b>Graduate</b>      | 4,066  | 4,104  | 3,753  | 3,828  | 3,683  | 12.2%      | -3.8%    | -9.4%  |
| <b>Law</b>           | 257    | 252    | 266    | 258    | 274    | 0.9%       | 6.2%     | 6.6%   |
| <b>Non-Degree</b>    | 4,963  | 4,502  | 3,389  | 3,509  | 3,029  | 10.1%      | -13.7%   | -39.0% |
| <b>Total</b>         | 32,340 | 31,525 | 30,531 | 30,771 | 30,080 | 100.0%     | -2.2%    | -7.0%  |





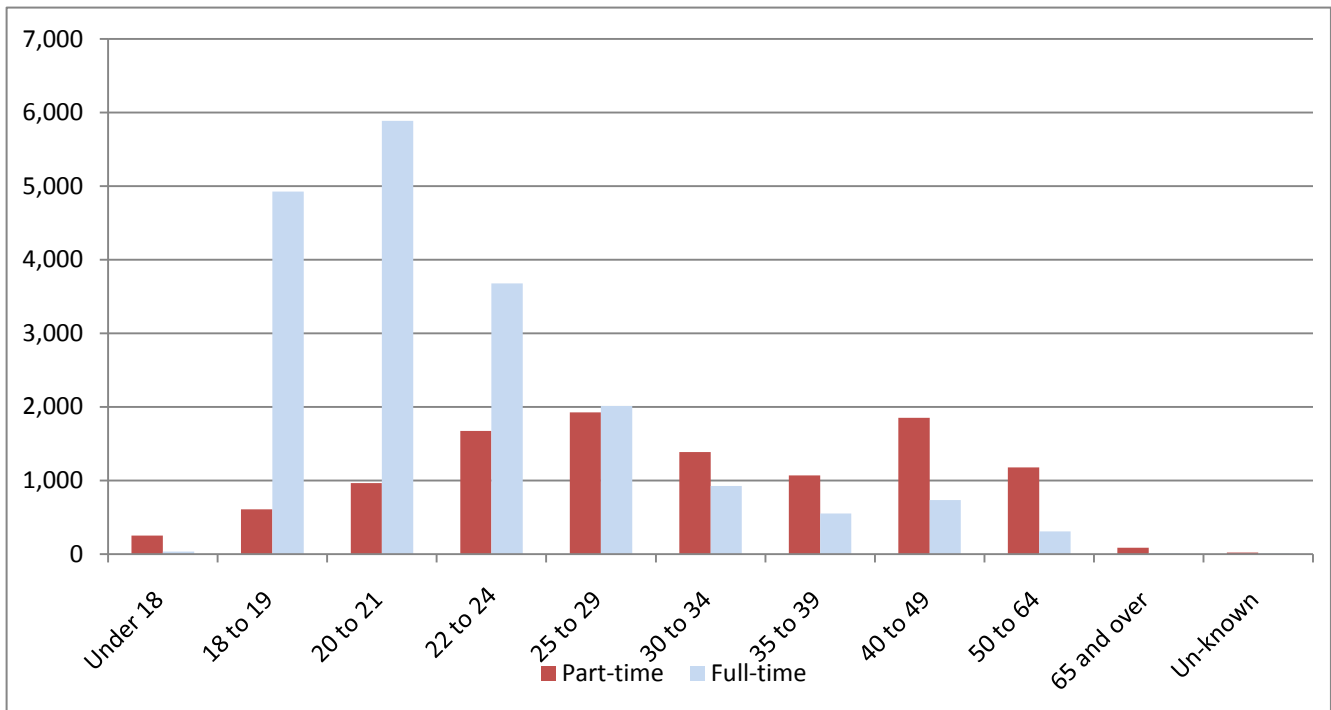
### Student Headcount Enrollment by Race/Ethnicity (self-identified)

|                         |   | White  | Black | Hispanic/<br>Latino | Asian | Am<br>Indian/<br>Alaska | Hawaii/<br>Pac.Isla | Non-<br>Resident<br>Alien | 2 or<br>More<br>Races | Not<br>Specified | Total  |
|-------------------------|---|--------|-------|---------------------|-------|-------------------------|---------------------|---------------------------|-----------------------|------------------|--------|
| <b>2010</b>             | # | 23,626 | 412   | 355                 | 333   | 543                     | 2                   | 657                       | 173                   | 4,670            | 30,771 |
|                         | % | 76.8%  | 1.3%  | 1.2%                | 1.1%  | 1.8%                    | 0.0%                | 2.1%                      | 0.6%                  | 15.2%            | 100.0% |
| <b>2011</b>             | # | 24,060 | 425   | 408                 | 302   | 492                     | 7                   | 689                       | 351                   | 3,346            | 30,080 |
|                         | % | 80.0%  | 1.4%  | 1.4%                | 1.0%  | 1.6%                    | 0.0%                | 2.3%                      | 1.2%                  | 11.1%            | 100.0% |
| <b>2010 to<br/>2011</b> | # | 434    | 13    | 53                  | -31   | -51                     | 5                   | 32                        | 178                   | -1,324           | -691   |
|                         | % | 1.8%   | 3.2%  | 14.9%               | -9.3% | -9.4%                   | 250.0%              | 4.9%                      | 102.9%                | -28.4%           | -2.2%  |



**Spring Headcount Enrollment by Age**  
**Spring 2011**

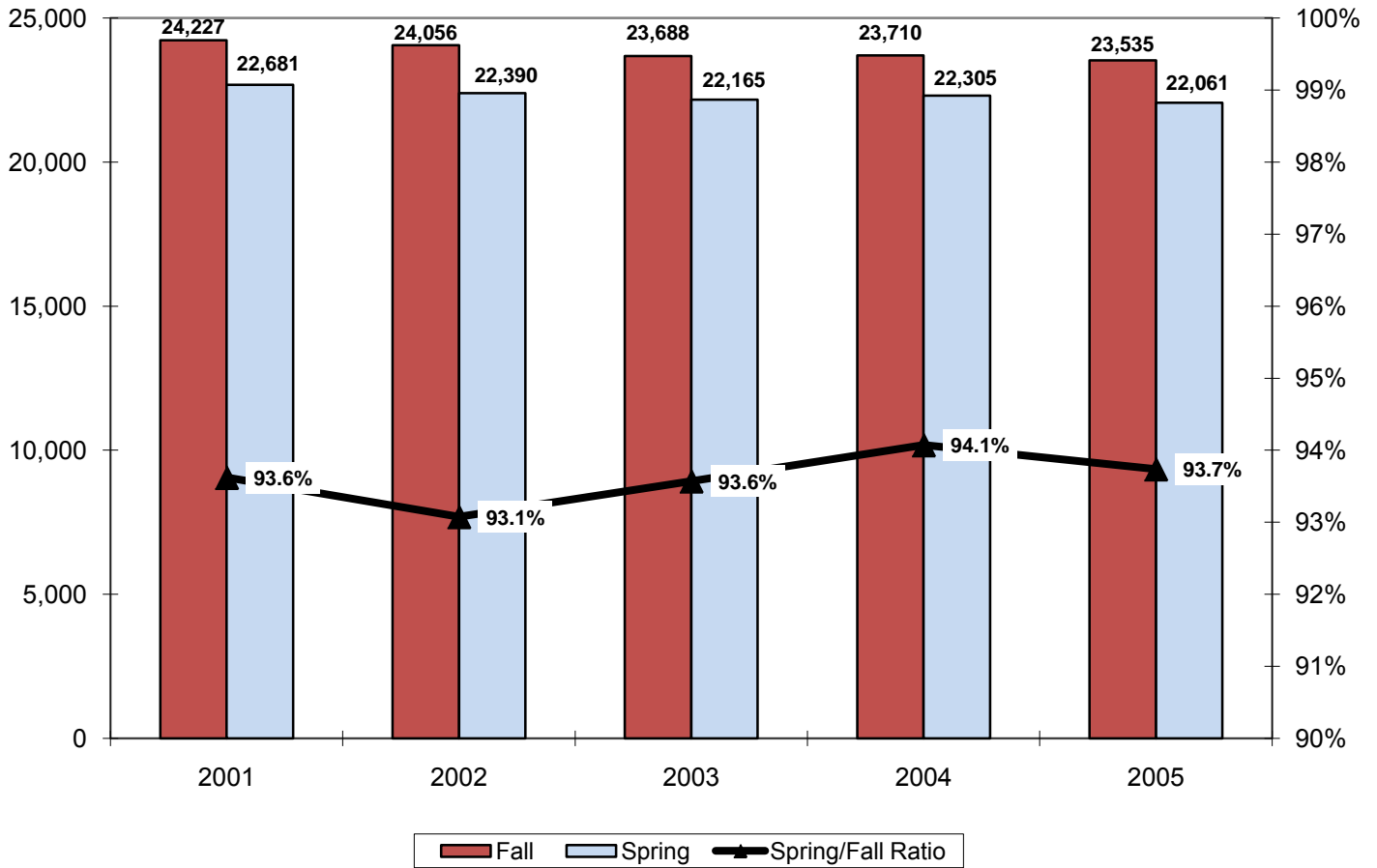
|                  |          | Under 18 | 18 - 24 | 25 - 39 | 40 - 64 | 65 + | Unknown | Total  |
|------------------|----------|----------|---------|---------|---------|------|---------|--------|
| <b>Part-time</b> | <b>#</b> | 252      | 3,245   | 4,379   | 3,025   | 85   | 22      | 11,008 |
|                  | <b>%</b> | 2.3%     | 29.5%   | 39.8%   | 27.5%   | 0.8% | 0.2%    | 100.0% |
| <b>Full-time</b> | <b>#</b> | 32       | 14,493  | 3,486   | 1,040   | 12   | 9       | 19,072 |
|                  | <b>%</b> | 0.2%     | 76.0%   | 18.3%   | 5.5%    | 0.1% | 0.0%    | 100.0% |
| <b>Total</b>     | <b>#</b> | 284      | 17,738  | 7,865   | 4,065   | 97   | 31      | 30,080 |
|                  | <b>%</b> | 0.9%     | 59.0%   | 26.1%   | 13.5%   | 0.3% | 0.1%    | 100.0% |



**5-Year Enrollment Change by Age Groups**

|                      |          | Under 18 | 18 - 24 | 25 - 39 | 40 - 64 | 65 and over | Unknown | Total  |
|----------------------|----------|----------|---------|---------|---------|-------------|---------|--------|
| <b>Spring 2007</b>   |          | 512      | 18,497  | 8,509   | 4,646   | 121         | 55      | 32,340 |
| <b>Spring 2011</b>   |          | 284      | 17,738  | 7,865   | 4,065   | 97          | 31      | 30,080 |
| <b>5 Year Change</b> | <b>#</b> | -228     | -759    | -644    | -581    | -24         | -24     | -2,260 |
|                      | <b>%</b> | -44.5%   | -4.1%   | -7.6%   | -12.5%  | -19.8%      | -43.6%  | -7.0%  |

## FALL-TO-SPRING FTE ENROLLMENT\* (2007 - 2011)\*\*



|                   | 2007   | 2008   | 2009   | 2010   | 2011   |
|-------------------|--------|--------|--------|--------|--------|
| <b>Fall</b>       | 24,227 | 24,056 | 23,689 | 23,710 | 23,535 |
| <b>Spring</b>     | 22,681 | 22,390 | 22,165 | 22,305 | 22,061 |
| <b>Difference</b> | 1,545  | 1,666  | 1,524  | 1,405  | 1,474  |
| <b>Ratio</b>      | 93.6%  | 93.1%  | 93.6%  | 94.1%  | 93.7%  |

\* The formula for calculating FTE (for all campuses except UMF beginning AY07) is as follows:  
 $\text{Undergraduate Credit Hours}/15 + \text{Professional (Law) Credit Hours}/15 + \text{Graduate Credit Hours}/9 = \text{FTE}$

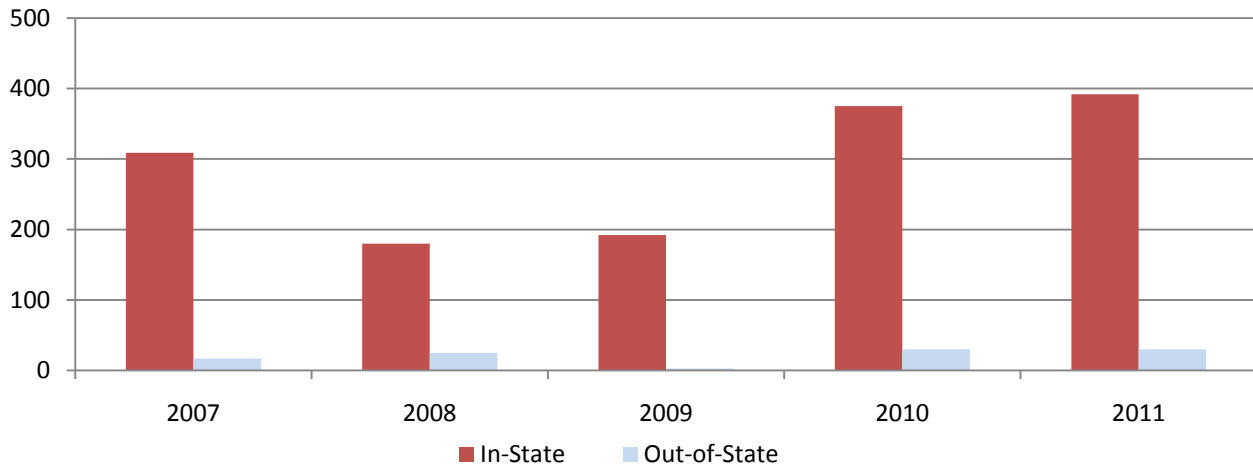
†UMF:  $\text{Undergraduate Credit Hours}/16 + \text{Graduate Credit Hours}/9 = \text{FTE}$

Totals may not add to detail due to rounding

\*\*Years 2007-2011 are academic years, i.e. Fall 2009 is in academic year 2010.

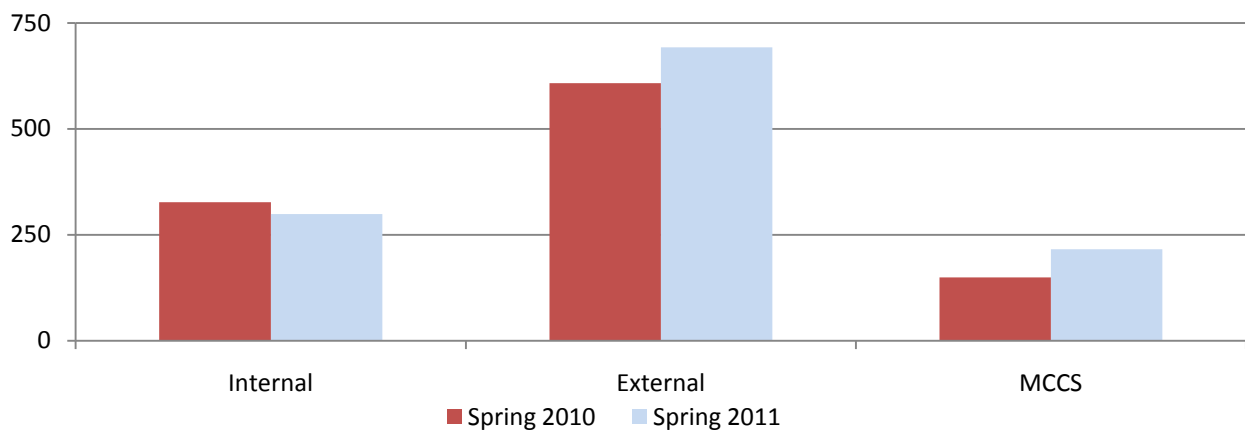
### First-Time, First-Year Headcount Enrollment

|                     | 2007 | 2008 | 2009 | 2010 | 2011 | % of Total | % Change |        |
|---------------------|------|------|------|------|------|------------|----------|--------|
|                     |      |      |      |      |      |            | 1-Year   | 5-year |
| <b>In-State</b>     | 309  | 180  | 192  | 375  | 392  | 92.9%      | 4.5%     | 26.9%  |
| <b>Out-of-State</b> | 17   | 25   | 3    | 30   | 30   | 7.1%       | 0.0%     | 76.5%  |
| <b>Total</b>        | 326  | 205  | 195  | 405  | 422  | 100.0%     | 4.2%     | 29.4%  |



### New Student Transfer Headcount\*

|   |                     | Spring 2010 | Spring 2011 | Change From 2010 to 2011 |       |
|---|---------------------|-------------|-------------|--------------------------|-------|
|   |                     |             |             | #                        | %     |
| <b>Internal</b>                                       | <b>In-State</b>     | 322         | 292         | -30                      | -9.3% |
|   | <b>Out-of-State</b> | 5           | 7           | 2                        | 40.0% |
|   | <b>Total</b>        | 327         | 299         | -28                      | -8.6% |
| <b>External</b>                                       | <b>In-State</b>     | 529         | 604         | 75                       | 14.2% |
|   | <b>Out-of-State</b> | 79          | 89          | 10                       | 12.7% |
|   | <b>Total</b>        | 608         | 693         | 85                       | 14.0% |
| <b>MCCS 1st Time Transfer (in External Transfers)</b> |                     | 149         | 216         | 67                       | 45.0% |



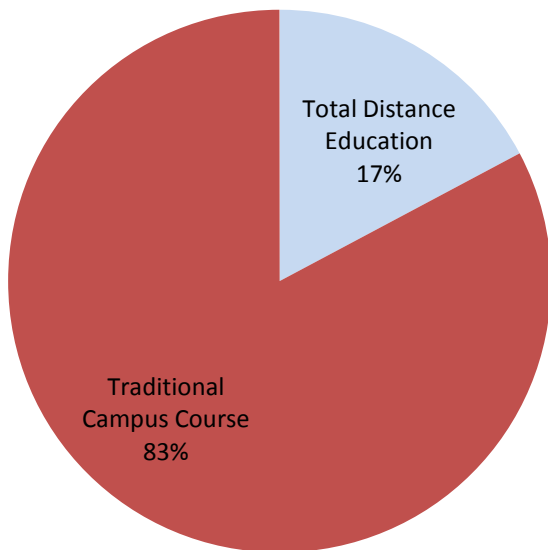
\*Internal transfer students have transferred from one UMS institution to another UMS institution.

\*External transfer students have transferred from a non-UMS institution into a UMS institution.

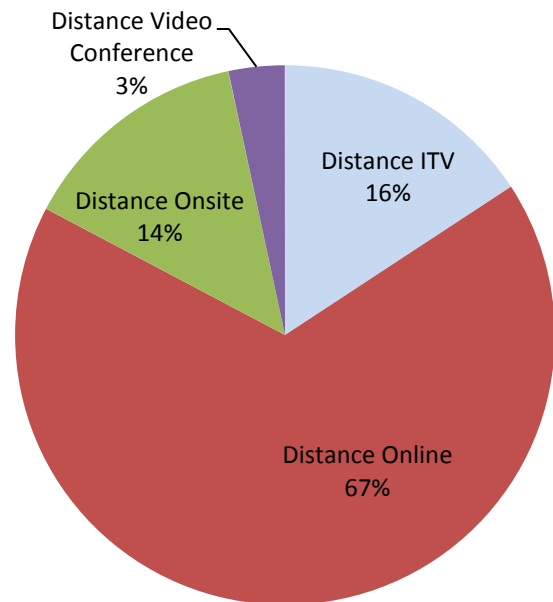
### Total Credit Hours by Mode

|                                 | Spring 2010      | Spring 2011      | Change          |              |
|---------------------------------|------------------|------------------|-----------------|--------------|
|                                 |                  |                  | #               | %            |
| Distance ITV                    | 8,150.0          | 8,620.0          | 470.0           | 5.8%         |
| Distance Online                 | 33,752.0         | 36,693.0         | 2,941.0         | 8.7%         |
| Distance Onsite                 | 8,105.0          | 7,603.5          | -501.5          | -6.2%        |
| Distance Video Conference       | 2,021.0          | 1,847.0          | -174.0          | -8.6%        |
| <b>Total Distance Education</b> | <b>52,028.0</b>  | <b>54,763.5</b>  | <b>2,735.5</b>  | <b>5.3%</b>  |
| Traditional Campus Course       | 269,875.0        | 263,317.5        | -6,557.5        | -2.4%        |
| <b>Total Credit Hours</b>       | <b>321,903.0</b> | <b>318,081.0</b> | <b>-3,822.0</b> | <b>-1.2%</b> |

Total Spring 2011 Credit Hours



Total Spring 2011 Distance Education Delivery Mode



### Distance Education Credit Hours by Degree Level

|   |                          | Credit Hours |                                |        |
|---|--------------------------|--------------|--------------------------------|--------|
| Distance ITV                              | Associate                | 2,055.0      | % of Distance ITV              | 23.8%  |
|   | Baccalaureate            | 5,893.0      |                                | 68.4%  |
|   | Non-Degree Undergraduate | 584.0        |                                | 6.8%   |
|   | Graduate                 | 46.0         |                                | 0.5%   |
|   | Non-Degree Graduate      | 42.0         |                                | 0.5%   |
| <b>Distance ITV Subtotal</b>              |                          | 8,620.0      | <b>% of UMS Subtotal</b>       | 15.7%  |
| Distance Online                           | Associate                | 2,471.0      | % of Distance Online           | 6.7%   |
|   | Baccalaureate            | 26,729.0     |                                | 72.8%  |
|   | Non-Degree Undergraduate | 5,260.0      |                                | 14.3%  |
|   | Graduate                 | 1,820.0      |                                | 5.0%   |
|   | Non-Degree Graduate      | 413.0        |                                | 1.1%   |
| <b>Distance Online Subtotal</b>           |                          | 36,693.0     | <b>% of UMS Subtotal</b>       | 67.0%  |
| Distance Onsite                           | Associate                | 1,961.0      | % of Distance Onsite           | 25.8%  |
|   | Baccalaureate            | 3,896.5      |                                | 51.2%  |
|   | Non-Degree Undergraduate | 1,189.0      |                                | 15.6%  |
|   | Graduate                 | 518.0        |                                | 6.8%   |
|   | Non-Degree Graduate      | 39.0         |                                | 0.5%   |
| <b>Distance Onsite Subtotal</b>           |                          | 7,603.5      | <b>% of UMS Subtotal</b>       | 13.9%  |
| Distance Video Conference                 | Associate                | 566.0        | % of Distance Video Conference | 30.6%  |
|   | Baccalaureate            | 684.0        |                                | 37.0%  |
|   | Non-Degree Undergraduate | 202.0        |                                | 10.9%  |
|   | Graduate                 | 320.0        |                                | 17.3%  |
|   | Non-Degree Graduate      | 75.0         |                                | 4.1%   |
| <b>Distance Video Conference Subtotal</b> |                          | 1,847.0      | <b>% of UMS Subtotal</b>       | 3.4%   |
| <b>UMS Subtotal</b>                       |                          | 54,763.5     | <b>% of UMS Subtotal</b>       | 100.0% |