

# SUMMARY OF SPRING 2008 ENROLLMENTS

February 21, 2008



*Maine's  
Public  
Universities*

---

UNIVERSITY OF MAINE SYSTEM

---

## SUMMARY OF SPRING 2008 ENROLLMENTS

---

### INTRODUCTION

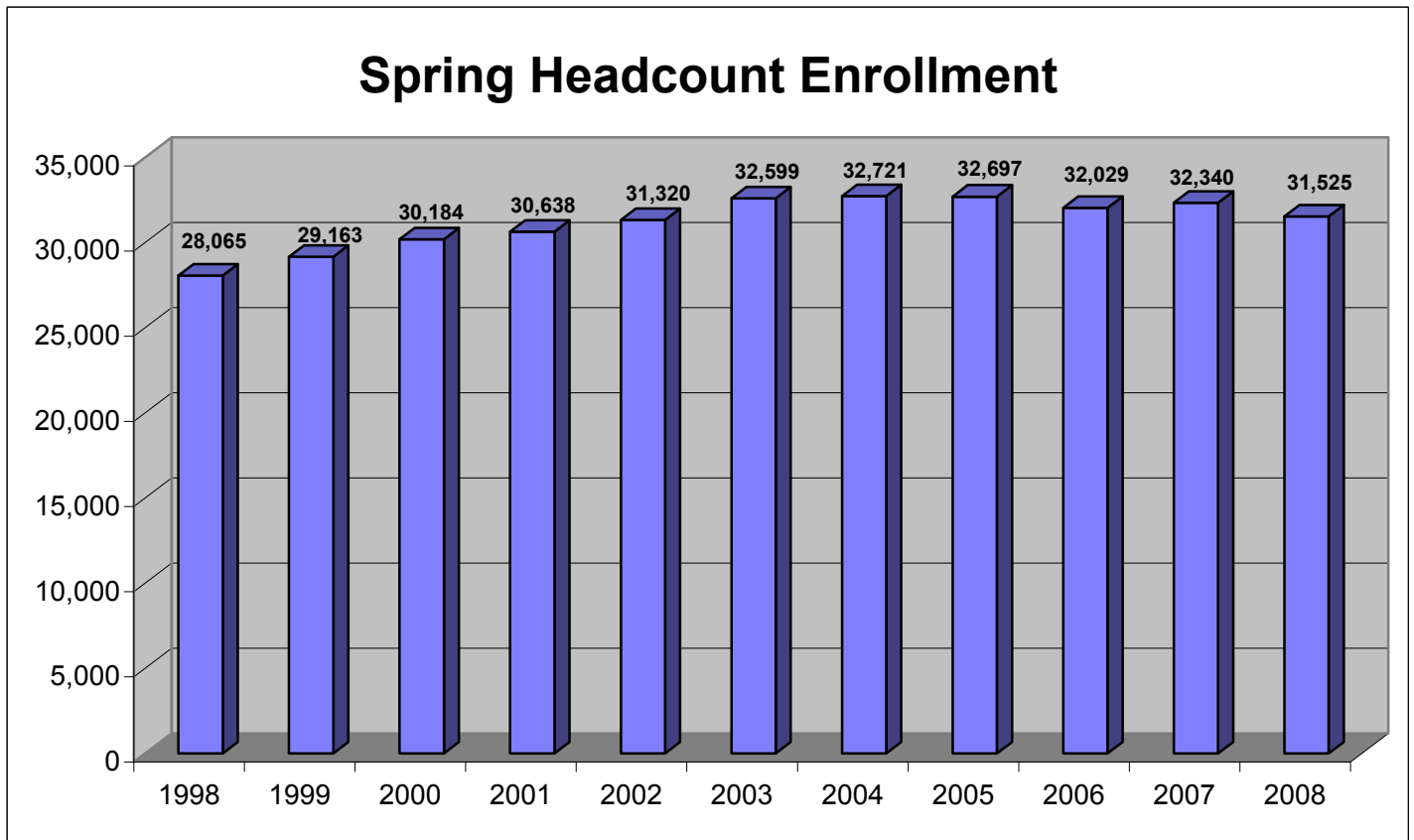
This report provides summary information regarding University enrollments. The tables and graphs show enrollments for the past 11 years, i.e., 1998-2008.

### TABLE OF CONTENTS

	<u>PAGE</u>
Highlights	1
By Headcount	2-4
By FTE (Full-time Equivalent)	5-7
By Change in Semester Enrollment	8-9
By Residence	10-11
By Gender	12-13
Full-Time/Part-Time	14-15
By Degree Level	16
By Degree Level by University	17
First-time First-year	18
By County of Residence	19-21
By State of Residence	22
By Country of Residence	23
Distance Learning	24

## **HIGHLIGHTS**

- **Headcount enrollment for Spring 2008 is 31,525 students, a decrease of 2.5% from spring 2007. Compared to last spring, the number of full-time students is down by 69 and the number of part-time students is down by 746. There are 19,378 women who make up 61% of the student body and 12,147 men, which account for the other 39%.**
- **Spring FTE enrollment continues to remain over 22,000, with FTE enrollment at 22,390, a decrease of 291 FTE students (1.3%) over last springs. For this academic year, spring FTE enrollment was 94% of fall FTE enrollment.**
- **Students who are Maine residents number 27,722, 88% of total enrollment. In-state enrollment decreased by 702 students and out-of-state enrollment decreased by 113 students. International students (933) decreased by 59 students and represent 3% of the student body.**
- **Every county in Maine sends at least 300 students to the University of Maine System. The largest numbers come from Cumberland (5,741), Penobscot (4,519), and Kennebec (2,972).**
- **Students come from all fifty states, plus the District of Columbia. A total of 53.7% of out-of-state students (excluding international students) come from the other New England states. Massachusetts alone accounts for 22.5% of students coming from other states.**
- **There are a total of 3,209 students enrolled in distance learning courses in Spring 2008, down 6% from 3,415 students in Spring 2007. Distance learning credits were 13,499 compared to 14,157 in Spring 2007 (an decrease of 4.6%). About 74%, or 2,369 students, are only enrolled in distance learning courses.**

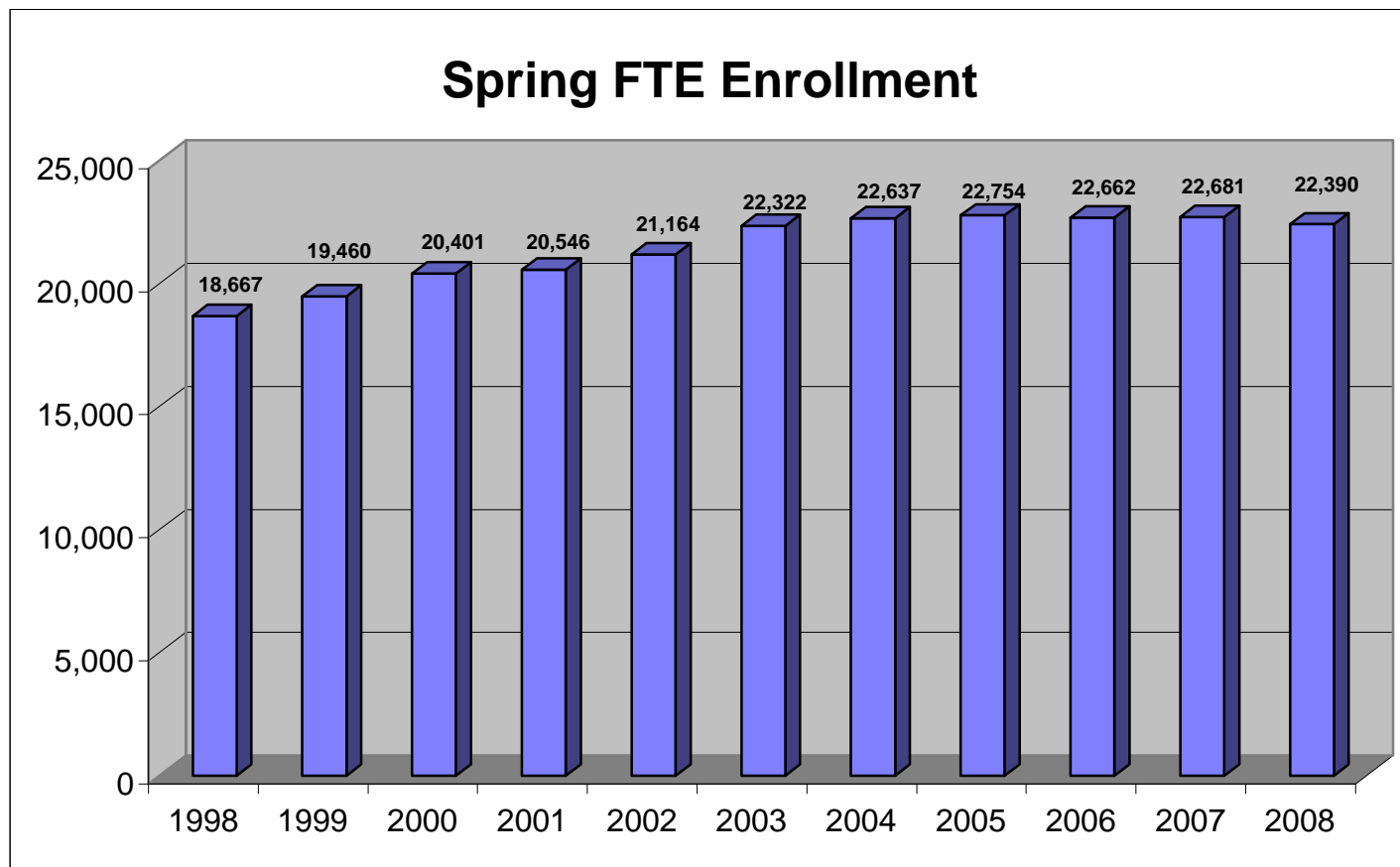


**SPRING HEADCOUNT ENROLLMENT**  
**(2004- 2008)**

	<u>2004</u>	<u>2005</u>	<u>2006</u>	<u>2007</u>	<u>2008</u>	CHANGE FROM 2007 TO 2008	
						<u>#</u>	<u>%</u>
UM	10,875	10,773	10,795	11,003	11,199	196	1.8
UMA	5,655	5,632	5,193	5,203	4,865	(338)	(6.5)
UMF	2,272	2,207	2,346	2,286	2,159	(127)	(5.6)
UMFK	942	1,082	1,144	1,296	1,223	(73)	(5.6)
UMM	1,234	1,234	1,111	1,286	1,170	(116)	(9.0)
UMPI	1,427	1,486	1,495	1,415	1,377	(38)	(2.7)
USM	<u>10,316</u>	<u>10,283</u>	<u>9,945</u>	<u>9,851</u>	<u>9,532</u>	<u>(319)</u>	<u>(3.2)</u>
TOTAL	<u><u>32,721</u></u>	<u><u>32,697</u></u>	<u><u>32,029</u></u>	<u><u>32,340</u></u>	<u><u>31,525</u></u>	<u><u>(815)</u></u>	<u><u>(2.5)</u></u>

**SPRING HEADCOUNT ENROLLMENT**  
**(1998 - 2003)**

	<u>1998</u>	<u>1999</u>	<u>2000</u>	<u>2001</u>	<u>2002</u>	<u>2003</u>
UM	8,818	9,036	9,479	9,863	10,274	10,906
UMA	4,778	5,281	5,468	5,434	5,544	5,662
UMF	2,299	2,364	2,347	2,283	2,256	2,273
UMFK	731	712	833	814	698	756
UMM	848	874	908	880	960	1,137
UMPI	1,206	1,256	1,367	1,287	1,278	1,397
USM	<u>9,385</u>	<u>9,640</u>	<u>9,782</u>	<u>10,077</u>	<u>10,310</u>	<u>10,468</u>
TOTAL	<u><u>28,065</u></u>	<u><u>29,163</u></u>	<u><u>30,184</u></u>	<u><u>30,638</u></u>	<u><u>31,320</u></u>	<u><u>32,599</u></u>



**SPRING FTE ENROLLMENT\***  
**(2004 - 2008)**

	<u>2004</u>	<u>2005</u>	<u>2006</u>	<u>2007**</u>	<u>2008**</u>	CHANGE FROM 2007 TO 2008	
						<u>#</u>	<u>%</u>
UM	8,532	8,544	8,672	8,819	8,983	164	1.9
UMA	2,795	2,811	2,610	2,623	2,493	(130)	(4.9)
UMF	1,986	1,937	2,027	1,936	1,846	(90)	(4.7)
UMFK	750	830	815	847	821	(26)	(3.1)
UMM	719	664	607	629	594	(35)	(5.5)
UMPI	1,094	1,159	1,146	1,094	1,019	(75)	(6.8)
USM	<u>6,761</u>	<u>6,810</u>	<u>6,785</u>	<u>6,734</u>	<u>6,634</u>	<u>(100)</u>	<u>(1.5)</u>
TOTAL	<u><u>22,637</u></u>	<u><u>22,754</u></u>	<u><u>22,662</u></u>	<u><u>22,681</u></u>	<u><u>22,390</u></u>	<u><u>(291)</u></u>	<u><u>(1.3)</u></u>

\* The formula for calculating FTE (for all campuses except UMF beginning Spring 2007) is as follows:

Undergraduate Credit Hours/15 + Professional (Law) Credit Hours/15 + Graduate Credit Hours/9 = FTE

\*\*UMF: Undergraduate Credit Hours/16 + Graduate Credit Hours/9 = FTE

Totals may not add to detail due to rounding



**SPRING FTE ENROLLMENT\***  
**(1998 - 2003)**

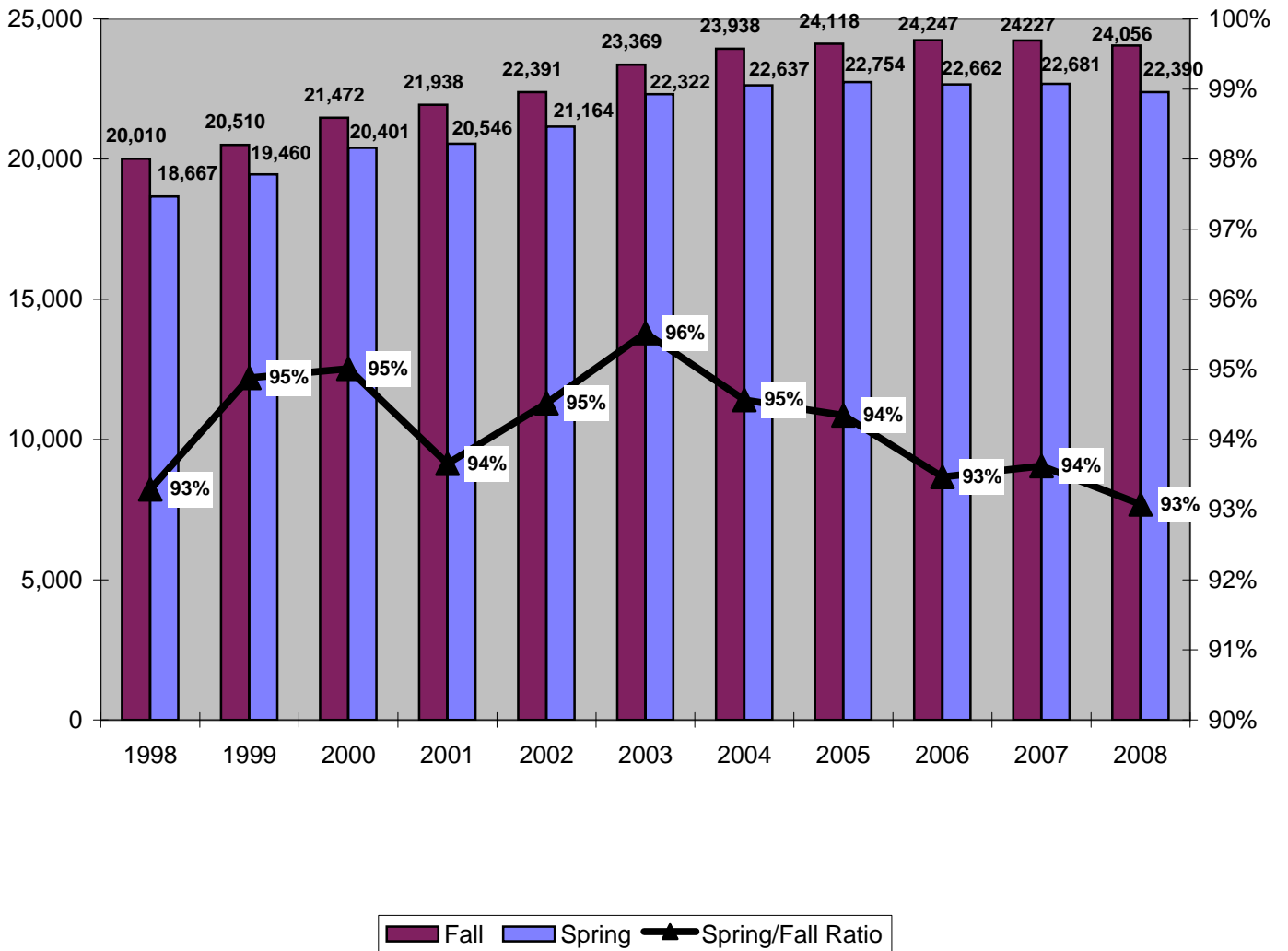
	<u>1998</u>	<u>1999</u>	<u>2000</u>	<u>2001</u>	<u>2002</u>	<u>2003</u>
UM	6,803	6,995	7,378	7,648	8,035	8,517
UMA	2,191	2,478	2,664	2,577	2,622	2,755
UMF	1,914	1,994	2,014	1,968	1,977	1,952
UMFK	470	538	686	626	560	625
UMM	599	607	584	571	636	690
UMPI	938	963	1,038	1,000	941	1,050
USM	<u>5,752</u>	<u>5,886</u>	<u>6,036</u>	<u>6,157</u>	<u>6,394</u>	<u>6,733</u>
TOTAL	<u>18,667</u>	<u>19,460</u>	<u>20,401</u>	<u>20,546</u>	<u>21,164</u>	<u>22,322</u>

\* The formula for calculating FTE (for all campuses except UMF beginning Spring 2007) is as follows:

Undergraduate Credit Hours/15 + Professional (Law) Credit Hours/15 + Graduate Credit Hours/9 = FTE

Totals may not add to detail due to rounding

**CHANGE IN SEMESTER FTE ENROLLMENT  
1998 - 2008**



**FALL-TO-SPRING FTE ENROLLMENT\*****(1998 - 2008)\*\***

	1998	1999	2000	2001	2002	2003	2004	2005	2006	2007	2008
<b>UM</b>											
Fall	7,156	7,356	7,719	7,980	8,335	8,665	8,923	9,054	9,204	9,401	9,548
Spring	6,803	6,995	7,378	7,648	8,035	8,517	8,532	8,544	8,672	8,819	8,983
Difference	353	361	341	332	300	148	391	511	532	582	565
Ratio	95.1%	95.1%	95.6%	95.8%	96.4%	98.3%	95.6%	94.4%	94.2%	93.8%	94.1%
<b>UMA</b>											
Fall	2,398	2,419	2,736	2,706	2,690	2,769	2,936	2,806	2,759	2,689	2,637
Spring	2,191	2,478	2,664	2,577	2,622	2,755	2,795	2,811	2,610	2,623	2,493
Difference	207	(59)	72	129	68	14	141	(5)	149	66	144
Ratio	91.4%	102.4%	97.4%	95.2%	97.5%	99.5%	95.2%	100.2%	94.6%	97.5%	94.5%
<b>UMF†</b>											
Fall	2,024	2,084	2,105	2,123	2,117	2,093	2,116	2,087	2,149	2,126	2,002
Spring	1,914	1,994	2,014	1,968	1,977	1,952	1,986	1,937	2,027	2,066	1,846
Difference	110	90	91	155	140	141	130	150	122	60	156
Ratio	94.6%	95.7%	95.7%	92.7%	93.4%	93.3%	93.8%	92.8%	94.3%	97.2%	92.2%
<b>UMFK</b>											
Fall	497	589	729	731	694	708	779	907	919	954	910
Spring	470	538	686	626	560	625	750	830	815	847	821
Difference	27	52	43	105	134	84	29	77	104	107	89
Ratio	94.5%	91.3%	94.2%	85.7%	80.6%	88.2%	96.3%	91.5%	88.7%	88.8%	90.2%
<b>UMM</b>											
Fall	641	640	606	605	653	680	754	666	626	617	581
Spring	599	607	584	571	636	690	719	664	607	629	594
Difference	42	34	22	35	17	(10)	36	3	19	(12)	(13)
Ratio	93.5%	94.8%	96.4%	94.3%	97.4%	101.5%	95.3%	99.6%	97.0%	101.9%	102.2%
<b>UMPI</b>											
Fall	1,060	1,036	1,081	1,135	1,058	1,158	1,207	1,293	1,242	1,260	1,221
Spring	938	963	1,038	1,000	941	1,050	1,094	1,159	1,146	1,094	1,019
Difference	122	73	44	135	118	109	113	135	96	167	202
Ratio	88.5%	92.9%	96.0%	88.1%	88.9%	90.6%	90.6%	89.6%	92.3%	86.8%	83.5%
<b>USM</b>											
Fall	6,234	6,386	6,496	6,658	6,844	7,296	7,223	7,305	7,348	7,180	7,157
Spring	5,752	5,886	6,036	6,157	6,394	6,733	6,761	6,810	6,785	6,734	6,634
Difference	482	500	460	501	450	563	462	495	563	446	523
Ratio	92.3%	92.2%	92.9%	92.5%	93.4%	92.3%	93.6%	93.2%	92.3%	93.8%	92.7%
<b>TOTAL</b>											
Fall	20,010	20,510	21,472	21,938	22,391	23,369	# 23,938	24,118	24,247	24,227	24,056
Spring	18,667	19,460	20,401	20,546	21,164	22,322	# 22,637	22,754	22,662	22,681	22,390
Difference	1,343	1,050	1,071	1,392	1,227	1,047	1,302	1,364	1,585	1,545	1,666
Ratio	93.3%	94.9%	95.0%	93.7%	94.5%	95.5%	94.6%	94.3%	93.5%	93.6%	93.1%

\* The formula for calculating FTE (for all campuses except UMF beginning AY07) is as follows:  
 Undergraduate Credit Hours/15 + Professional (Law) Credit Hours/15 + Graduate Credit Hours/9 = FTE

†UMF: Undergraduate Credit Hours/16 + Graduate Credit Hours/9 = FTE

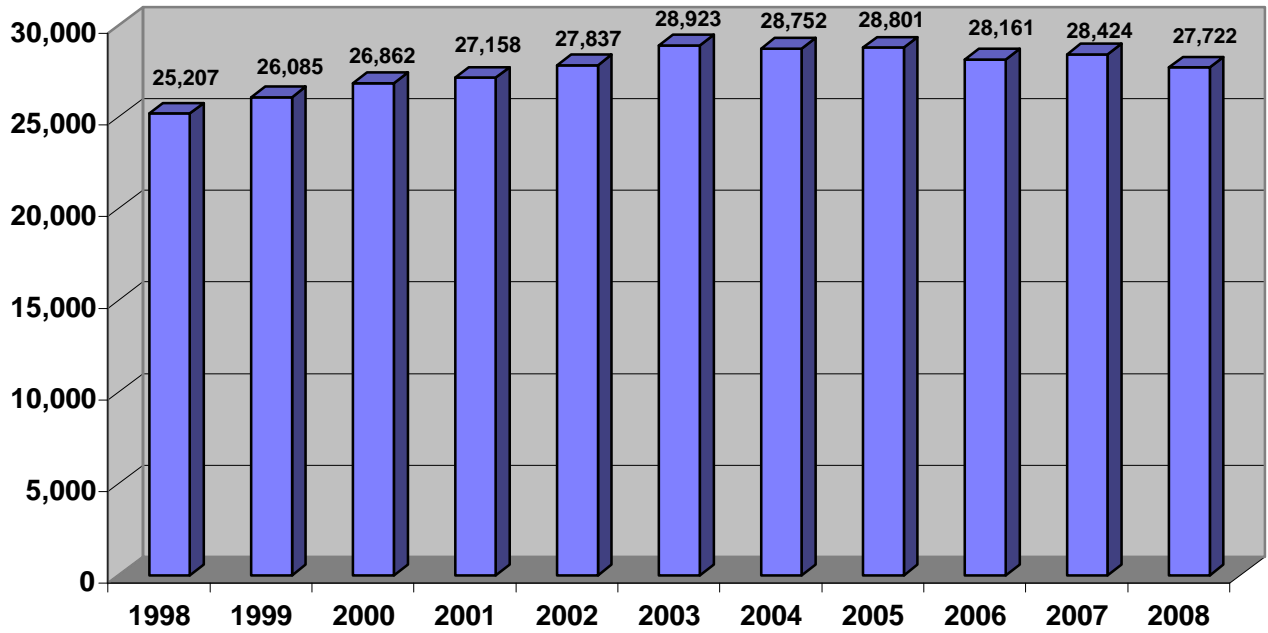
Totals may not add to detail due to rounding

\*\*Years 1998-2008 are academic years, i.e. Fall 2005 is in academic year 2006.

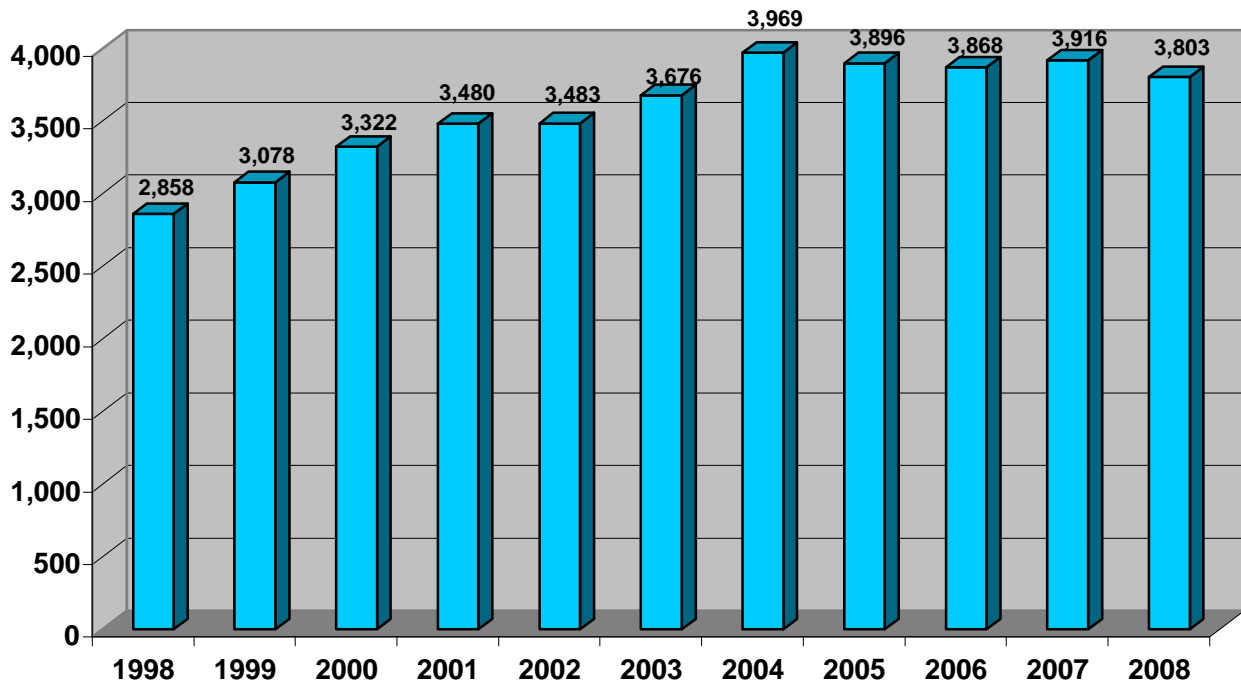
**SPRING HEADCOUNT ENROLLMENT BY RESIDENCE, BY UNIVERSITY**  
**(1998-2008)**

	1998	1999	2000	2001	2002	2003	2004	2005	2006	2007	2008	CHANGE FROM	
												2007 TO 2008	
												#	%
<b><u>UM</u></b>													
In-State	7,305	7,463	7,898	8,252	8,682	9,223	9,152	9,147	9,135	9,244	9,428	184	2.0
Out-of-State	1,513	1,573	1,581	1,611	1,592	1,683	1,723	1,626	1,660	1,759	1,771	12	0.7
Total	8,818	9,036	9,479	9,863	10,274	10,906	10,875	10,773	10,795	11,003	11,199	196	1.8
<b><u>UMA</u></b>													
In-State	4,746	5,246	5,437	5,324	5,432	5,537	5,490	5,464	5,045	5,061	4,736	(325)	(6.4)
Out-of-State	32	35	31	110	112	125	165	168	148	142	129	(13)	(9.2)
Total	4,778	5,281	5,468	5,434	5,544	5,662	5,655	5,632	5,193	5,203	4,865	(338)	(6.5)
<b><u>UMF</u></b>													
In-State	1,999	2,027	1,980	1,901	1,853	1,879	1,875	1,841	1,962	1,895	1,811	(84)	(4.4)
Out-of-State	300	337	367	382	403	394	397	366	384	391	348	(43)	(11.0)
Total	2,299	2,364	2,347	2,283	2,256	2,273	2,272	2,207	2,346	2,286	2,159	(127)	(5.6)
<b><u>UMFK</u></b>													
In-State	610	539	575	555	479	535	674	777	876	1,031	975	(56)	(5.4)
Out-of-State	121	173	258	259	219	221	268	305	268	265	248	(17)	(6.4)
Total	731	712	833	814	698	756	942	1,082	1,144	1,296	1,223	(73)	(5.6)
<b><u>UMM</u></b>													
In-State	687	720	764	735	755	929	1,005	1,034	939	1,140	1,016	(124)	(10.9)
Out-of-State	161	154	144	145	205	208	229	200	172	146	154	8	5.5
Total	848	874	908	880	960	1,137	1,234	1,234	1,111	1,286	1,170	(116)	(9.0)
<b><u>UMPI</u></b>													
In-State	1,039	1,076	1,104	1,031	1,085	1,135	1,116	1,129	1,133	1,068	1,056	(12)	(1.1)
Out-of-State	167	180	263	256	193	262	311	357	362	347	321	(26)	(7.5)
Total	1,206	1,256	1,367	1,287	1,278	1,397	1,427	1,486	1,495	1,415	1,377	(38)	(2.7)
<b><u>USM</u></b>													
In-State	8,821	9,014	9,104	9,360	9,551	9,685	9,440	9,409	9,071	8,985	8,700	(285)	(3.2)
Out-of-State	564	626	678	717	759	783	876	874	874	866	832	(34)	(3.9)
Total	9,385	9,640	9,782	10,077	10,310	10,468	10,316	10,283	9,945	9,851	9,532	(319)	(3.2)
<b><u>TOTAL</u></b>													
In-State	25,207	26,085	26,862	27,158	27,837	28,923	28,752	28,801	28,161	28,424	27,722	(702)	(2.5)
Out-of-State	2,858	3,078	3,322	3,480	3,483	3,676	3,969	3,896	3,868	3,916	3,803	(113)	(2.9)
Total	28,065	29,163	30,184	30,638	31,320	32,599	32,721	32,697	32,029	32,340	31,525	(815)	(2.5)

Spring In-State Enrollment



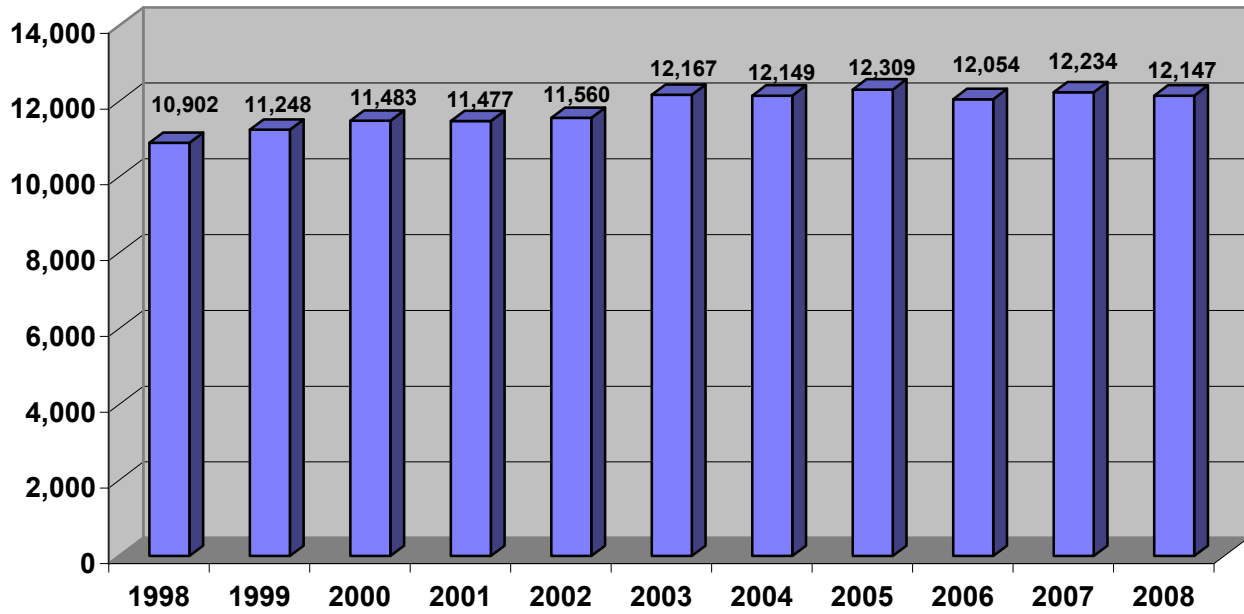
Spring Out-of-State Enrollment



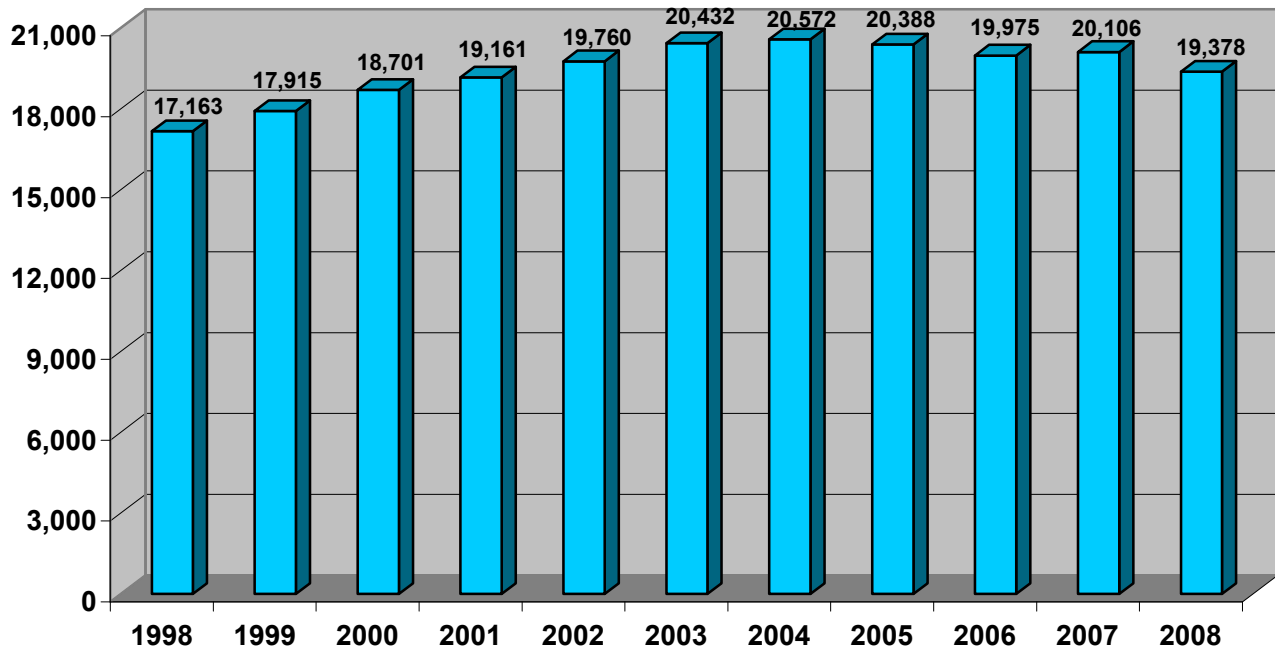
**SPRING HEADCOUNT ENROLLMENT BY GENDER**  
**(1998 - 2008)**

	1998	1999	2000	2001	2002	2003	2004	2005	2006	2007	2008	CHANGE FROM 2007 TO 2008	
												#	%
<b><u>UM</u></b>													
Men	4,257	4,274	4,384	4,513	4,637	4,945	4,941	4,940	4,976	5,137	5,335	198	3.9
Women	4,561	4,762	5,095	5,350	5,637	5,961	5,934	5,833	5,819	5,866	5,864	(2)	(0.0)
Total	8,818	9,036	9,479	9,863	10,274	10,906	10,875	10,773	10,795	11,003	11,199	196	1.8
<b><u>UMA</u></b>													
Men	1,271	1,413	1,435	1,385	1,290	1,417	1,436	1,449	1,308	1,340	1,268	(72)	(5.4)
Women	3,507	3,868	4,033	4,049	4,254	4,245	4,219	4,183	3,885	3,863	3,597	(266)	(6.9)
Total	4,778	5,281	5,468	5,434	5,544	5,662	5,655	5,632	5,193	5,203	4,865	(338)	(6.5)
<b><u>UMF</u></b>													
Men	715	767	738	747	739	761	784	763	775	750	719	(31)	(4.1)
Women	1,584	1,597	1,609	1,536	1,517	1,512	1,488	1,444	1,571	1,536	1,440	(96)	(6.3)
Total	2,299	2,364	2,347	2,283	2,256	2,273	2,272	2,207	2,346	2,286	2,159	(127)	(5.6)
<b><u>UMFK</u></b>													
Men	245	271	297	273	245	293	320	389	392	414	369	(45)	(10.9)
Women	486	441	536	541	453	463	622	693	752	882	854	(28)	(3.2)
Total	731	712	833	814	698	756	942	1,082	1,144	1,296	1,223	(73)	(5.6)
<b><u>UMM</u></b>													
Men	306	326	319	287	302	331	344	350	293	359	324	(35)	(9.7)
Women	542	548	589	593	658	806	890	884	818	927	846	(81)	(8.7)
Total	848	874	908	880	960	1,137	1,234	1,234	1,111	1,286	1,170	(116)	(9.0)
<b><u>UMPI</u></b>													
Men	476	499	515	467	463	501	483	503	499	485	478	(7)	(1.4)
Women	730	757	852	820	815	896	944	983	996	930	899	(31)	(3.3)
Total	1,206	1,256	1,367	1,287	1,278	1,397	1,427	1,486	1,495	1,415	1,377	(38)	(2.7)
<b><u>USM</u></b>													
Men	3,632	3,698	3,795	3,805	3,884	3,919	3,841	3,915	3,811	3,749	3,654	(95)	(2.5)
Women	5,753	5,942	5,987	6,272	6,426	6,549	6,475	6,368	6,134	6,102	5,878	(224)	(3.7)
Total	9,385	9,640	9,782	10,077	10,310	10,468	10,316	10,283	9,945	9,851	9,532	(319)	(3.2)
<b><u>TOTAL</u></b>													
Men	10,902	11,248	11,483	11,477	11,560	12,167	12,149	12,309	12,054	12,234	12,147	(87)	(0.7)
Women	17,163	17,915	18,701	19,161	19,760	20,432	20,572	20,388	19,975	20,106	19,378	(728)	(3.6)
Total	28,065	29,163	30,184	30,638	31,320	32,599	32,721	32,697	32,029	32,340	31,525	(815)	(2.5)

Spring Enrollment - Men



Spring Enrollment - Women

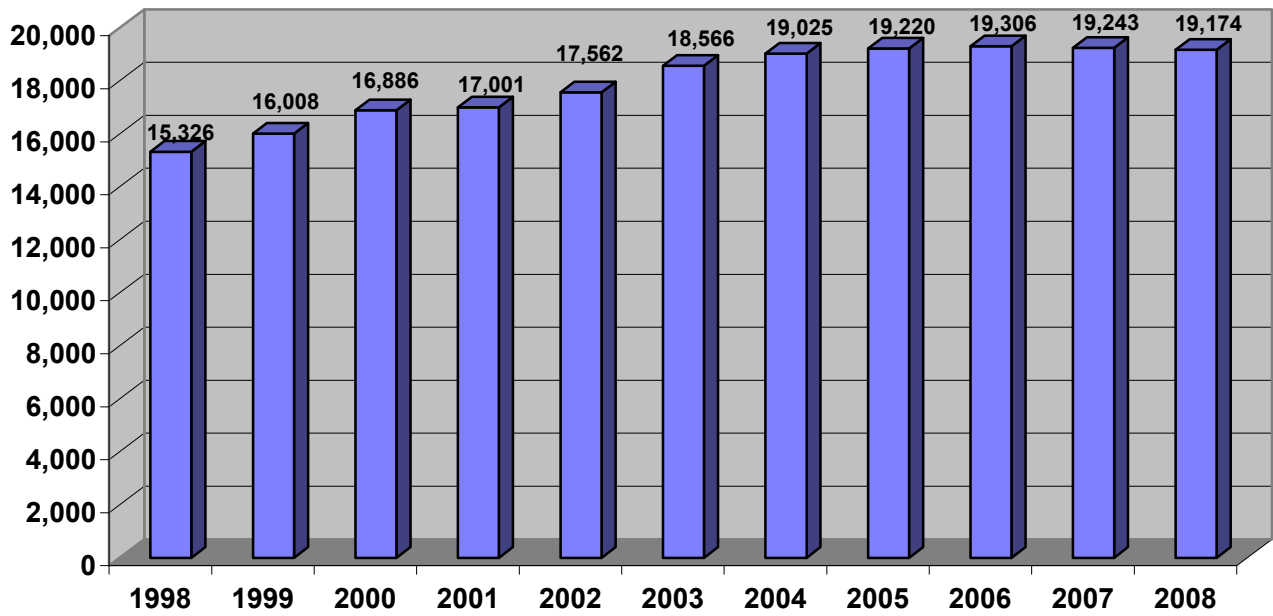


## FULL-TIME AND PART-TIME SPRING HEADCOUNT ENROLLMENT BY UNIVERSITY (1998 - 2008)

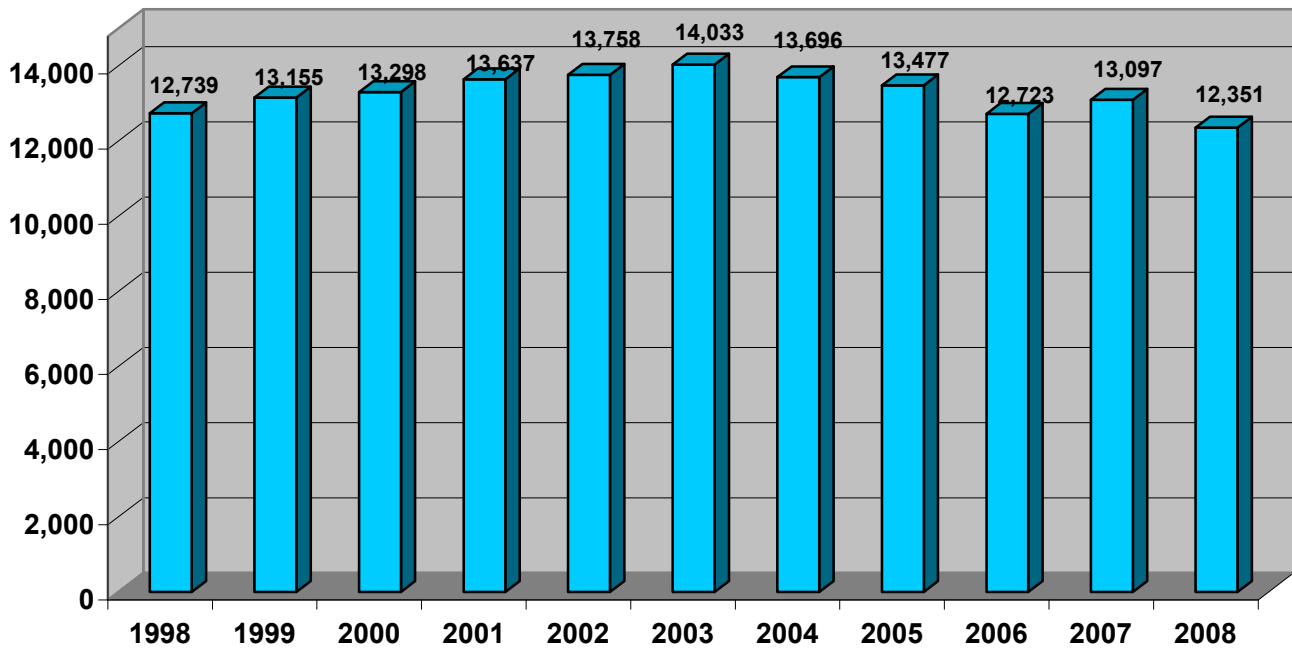
	1998	1999	2000	2001	2002	2003	2004	2005	2006	2007	2008	CHANGE FROM 2007 to 2008	
												#	%
<b>UM</b>													
Full-time	6,292	6,517	6,869	7,117	7,469	7,876	8,027	8,105	8,245	8,314	8,490	176	2.1
Part-time	2,526	2,519	2,610	2,746	2,805	3,030	2,848	2,668	2,550	2,689	2,709	20	0.7
Total	8,818	9,036	9,479	9,863	10,274	10,906	10,875	10,773	10,795	11,003	11,199	196	1.8
<b>UMA</b>													
Full-time	1,122	1,355	1,514	1,401	1,371	1,506	1,575	1,555	1,448	1,479	1,426	(53)	(3.6)
Part-time	3,656	3,926	3,954	4,033	4,173	4,156	4,080	4,077	3,745	3,724	3,439	(285)	(7.7)
Total	4,778	5,281	5,468	5,434	5,544	5,662	5,655	5,632	5,193	5,203	4,865	(338)	(6.5)
<b>UMF</b>													
Full-time	1,837	1,909	1,936	1,910	1,920	1,902	1,925	1,897	2,004	1,969	1,870	(99)	(5.0)
Part-time	462	455	411	373	336	371	347	310	342	317	289	(28)	(8.8)
Total	2,299	2,364	2,347	2,283	2,256	2,273	2,272	2,207	2,346	2,286	2,159	(127)	(5.6)
<b>UMFK</b>													
Full-time	367	425	558	507	466	533	614	676	637	642	622	(20)	(3.1)
Part-time	364	287	275	307	232	223	328	406	507	654	601	(53)	(8.1)
Total	731	712	833	814	698	756	942	1,082	1,144	1,296	1,223	(73)	(5.6)
<b>UMM</b>													
Full-time	505	500	461	457	508	525	533	476	429	417	406	(11)	(2.6)
Part-time	343	374	447	423	452	612	701	758	682	869	764	(105)	(12.1)
Total	848	874	908	880	960	1,137	1,234	1,234	1,111	1,286	1,170	(116)	(9.0)
<b>UMPI</b>													
Full-time	846	853	918	894	831	924	961	1,019	1,013	951	870	(81)	(8.5)
Part-time	360	403	449	393	447	473	466	467	482	464	507	43	9.3
Total	1,206	1,256	1,367	1,287	1,278	1,397	1,427	1,486	1,495	1,415	1,377	(38)	(2.7)
<b>USM</b>													
Full-time	4,357	4,449	4,630	4,715	4,997	5,300	5,390	5,492	5,530	5,471	5,490	19	0.3
Part-time	5,028	5,191	5,152	5,362	5,313	5,168	4,926	4,791	4,415	4,380	4,042	(338)	(7.7)
Total	9,385	9,640	9,782	10,077	10,310	10,468	10,316	10,283	9,945	9,851	9,532	(319)	(3.2)
<b>TOTAL</b>													
Full-time	15,326	16,008	16,886	17,001	17,562	18,566	19,025	19,220	19,306	19,243	19,174	(69)	(0.4)
Part-time	12,739	13,155	13,298	13,637	13,758	14,033	13,696	13,477	12,723	13,097	12,351	(746)	(5.7)
Total	28,065	29,163	30,184	30,638	31,320	32,599	32,721	32,697	32,029	32,340	31,525	(815)	(2.5)



Spring Full-Time Enrollment



Spring Part-Time Enrollment



**SPRING HEADCOUNT ENROLLMENT BY DEGREE LEVEL**  
**(1998 - 2008)**

	1998	1999	2000	2001	2002	2003	2004	2005	2006	2007	2008	CHANGE FROM 2007 TO 2008	
												#	%
Associate	3,218	3,335	3,368	3,049	3,051	3,015	2,903	2,648	2,200	2,015	1,795	(220)	(10.9)
Baccalaureate	16,512	17,117	18,083	18,254	18,923	19,807	20,381	20,844	21,032	21,039	20,872	(167)	(0.8)
Graduate	3,367	3,479	3,576	3,788	3,943	4,299	4,153	4,132	4,016	4,066	4,104	38	0.9
Law	283	280	256	229	230	245	270	269	249	257	252	(5)	(1.9)
Non-Degree	<u>4,685</u>	<u>4,952</u>	<u>4,901</u>	<u>5,318</u>	<u>5,173</u>	<u>5,233</u>	<u>5,014</u>	<u>4,804</u>	<u>4,532</u>	<u>4,963</u>	<u>4,502</u>	<u>(461)</u>	<u>(9.3)</u>
Total	<u>28,065</u>	<u>29,163</u>	<u>30,184</u>	<u>30,638</u>	<u>31,320</u>	<u>32,599</u>	<u>32,721</u>	<u>32,697</u>	<u>32,029</u>	<u>32,340</u>	<u>31,525</u>	<u>(815)</u>	<u>(2.5)</u>

**HEADCOUNT ENROLLMENT BY DEGREE LEVEL AND UNIVERSITY****SPRING 2008**

	Associate		Baccalaureate		Graduate		Law		Non-Degree		Total	
	#	%	#	%	#	%	#	%	#	%	#	%
UM	0	0.0	8,274	73.9	2,056	18.4	0	0.0	869	7.8	11,199	100.0
UMA	1,634	33.6	2,304	47.4	1	0.0	0	0.0	926	19.0	4,865	100.0
UMF	0	0.0	1,971	91.3	0	0.0	0	0.0	188	8.7	2,159	100.0
UMFK	74	6.1	700	57.2	0	0.0	0	0.0	449	36.7	1,223	100.0
UMM	43	3.7	472	40.3	1	0.1	0	0.0	654	55.9	1,170	100.0
UMPI	33	2.4	1,008	73.2	0	0.0	0	0.0	336	24.4	1,377	100.0
USM	<u>11</u>	0.1	<u>6,143</u>	64.4	<u>2,046</u>	21.5	<u>252</u>	2.6	<u>1,080</u>	11.3	<u>9,532</u>	100.0
TOTAL	<u>1,795</u>	5.7	<u>20,872</u>	66.2	<u>4,104</u>	13.0	<u>252</u>	0.8	<u>4,502</u>	14.3	<u>31,525</u>	100.0

Note: Percentages may not add to 100.0 due to rounding.

**SPRING FIRST-TIME FIRST-YEAR STUDENT ENROLLMENT  
(1988 - 2008)**

	<u>UM</u>		<u>UMA</u>		<u>UMF</u>		<u>UMFK</u>		<u>UMM</u>		<u>UMPI</u>		<u>USM</u>		<u>TOTAL</u>	
1988	96		104		35		12		25		16		130		418	
1989	100		127		31		22		28		27		124		459	
1990	158		122		37		11		43		33		137		541	
1991	145		176		52		12		31		40		163		619	
1992	89		154		32		13		25		16		132		461	
1993	110		194		39		18		25		36		169		591	
1994	88		225		38		15		21		24		128		539	
1995	75		152		23		14		22		27		125		438	
1996	42		206		33		7		24		30		100		442	
1997	46		239		37		15		28		38		147		550	
1998	42		197		31		8		23		22		76		399	
1999	59		226		39		12		23		45		107		511	
2000	41		224		26		12		20		39		119		481	
2001	41		192		16		12		15		42		106		424	
2002	59		270		24		13		6		52		108		532	
2003	47		298		20		18		12		27		78		500	
2004	51		230		23		24		9		36		59		432	
2005	42		213		18		19		15		29		73		409	
2006	48		181		31		11		11		28		72		382	
2007	42		173		8		8		13		23		59		326	
2008	44		177		18		9		9		14		56		327	
Change from 2007 to 2008	<u>#</u>	<u>%</u>	<u>#</u>	<u>%</u>	<u>#</u>	<u>%</u>	<u>#</u>	<u>%</u>	<u>#</u>	<u>%</u>	<u>#</u>	<u>%</u>	<u>#</u>	<u>%</u>	<u>#</u>	<u>%</u>
	2	4.8	4	2.3	10	125.0	1	12.5	(4)	(30.8)	(9)	(39.1)	(3)	(5.1)	1	0.3

**SPRING HEADCOUNT ENROLLMENT**  
**BY**  
**COUNTY OF RESIDENCE**  
**(2004 - 2008)**

	2004		2005		2006		2007		2008		CHANGE FROM 2007 TO 2008	
	#	%	#	%	#	%	#	%	#	%	#	%
<b><u>IN-STATE</u></b>												
Androscoggin	2,107	6.4	2,179	6.7	2,010	6.3	1,879	5.8	1,773	5.6	(106)	(5.6)
Aroostook	2,125	6.5	2,162	6.6	2,182	6.8	2,189	6.8	2,083	6.6	(106)	(4.8)
Cumberland	5,787	17.7	5,693	17.4	5,671	17.7	5,676	17.6	5,741	18.2	65	1.1
Franklin	759	2.3	757	2.3	701	2.2	712	2.2	642	2.0	(70)	(9.8)
Hancock	1,076	3.3	1,106	3.4	1,080	3.4	1,110	3.4	1,062	3.4	(48)	(4.3)
Kennebec	3,101	9.5	3,061	9.4	3,089	9.6	2,996	9.3	2,972	9.4	(24)	(0.8)
Knox	953	2.9	961	2.9	972	3.0	1,002	3.1	1,007	3.2	5	0.5
Lincoln	651	2.0	676	2.1	671	2.1	693	2.1	664	2.1	(29)	(4.2)
Oxford	1,033	3.2	1,119	3.4	1,042	3.3	1,065	3.3	1,103	3.5	38	3.6
Penobscot	4,668	14.3	4,703	14.4	4,442	13.9	4,715	14.6	4,519	14.3	(196)	(4.2)
Piscataquis	356	1.1	354	1.1	351	1.1	294	0.9	304	1.0	10	3.4
Sagadahoc	837	2.6	791	2.4	815	2.5	783	2.4	768	2.4	(15)	(1.9)
Somerset	711	2.2	767	2.3	764	2.4	878	2.7	877	2.8	(1)	(0.1)
Waldo	868	2.7	840	2.6	847	2.6	880	2.7	796	2.5	(84)	(9.5)
Washington	893	2.7	832	2.5	813	2.5	872	2.7	701	2.2	(171)	(19.6)
York	2,827	8.6	2,800	8.6	2,711	8.5	2,680	8.3	2,710	8.6	30	1.1
Subtotal	28,752	87.9	28,801	88.1	28,161	87.9	28,424	87.9	27,722	87.9	(702)	(2.5)
<b><u>OUT-OF-STATE</u></b>	3,969	12.1	3,896	11.9	3,868	12.1	3,916	12.1	3,803	12.1	(113)	(2.9)
<b><u>TOTAL</u></b>	<u>32,721</u>	<u>100.0</u>	<u>32,697</u>	<u>100.0</u>	<u>32,029</u>	<u>100.0</u>	<u>32,340</u>	<u>100.0</u>	<u>31,525</u>	<u>100.0</u>	<u>(815)</u>	<u>(2.5)</u>
<b><u>INTERNATIONAL</u></b>	1,033	3.2	1,030	3.2	972	3.0	992	3.1	933	3.0	(59)	(5.9)

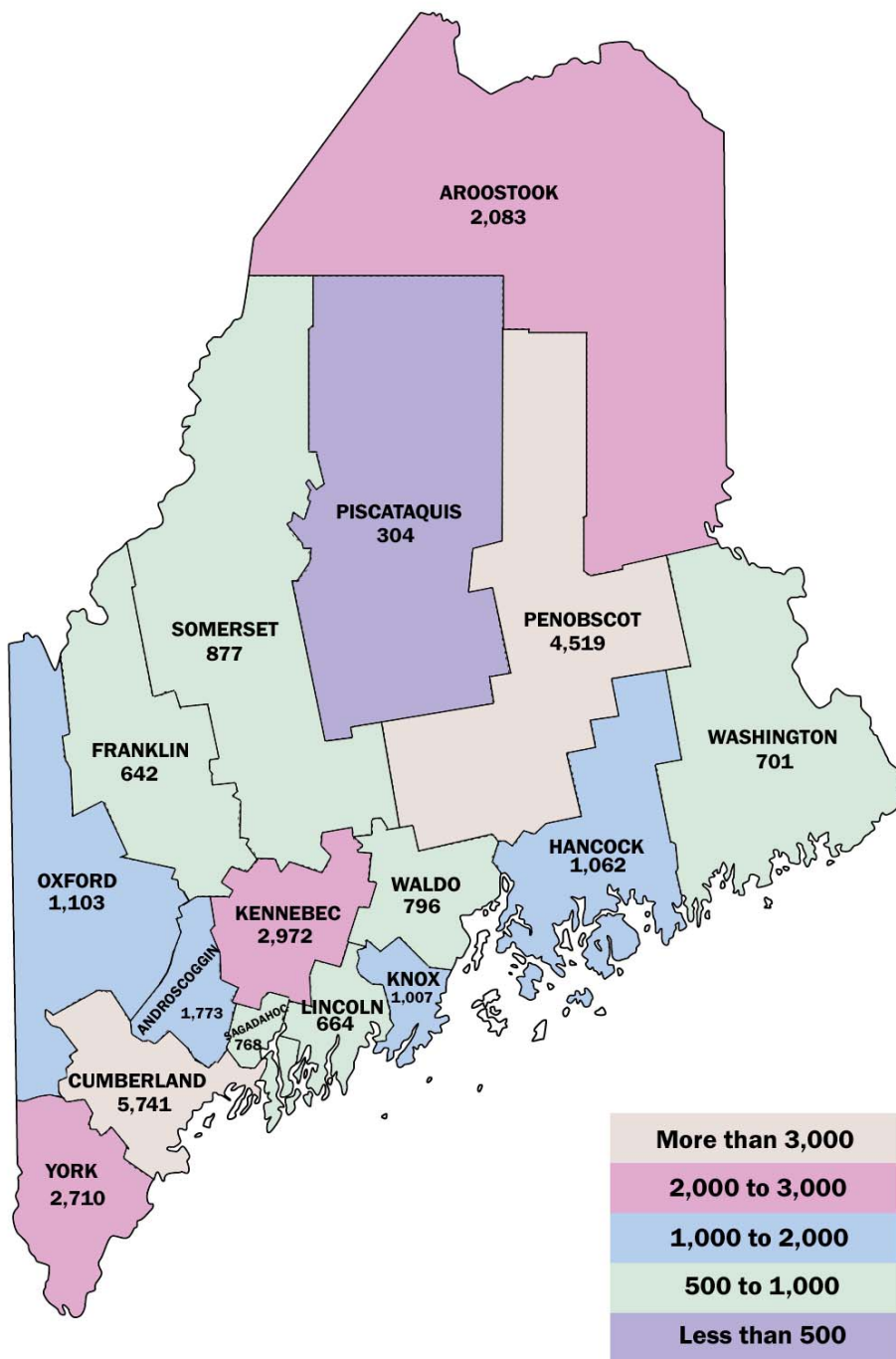
NOTE: Detail percentages may not add to total due to rounding.

**SPRING HEADCOUNT ENROLLMENT**  
**BY**  
**COUNTY OF RESIDENCE**  
**(1998 - 2003)**

	1998		1999		2000		2001		2002		2003	
	#	%	#	%	#	%	#	%	#	%	#	%
<b><u>IN-STATE</u></b>												
Androscoggin	1,806	6.6	1,954	6.7	1,910	6.3	2,045	6.7	2,074	6.6	2,109	6.5
Aroostook	1,957	7.0	2,061	7.1	2,113	7.0	2,053	6.7	2,014	6.4	2,091	6.4
Cumberland	5,494	19.7	5,466	18.7	5,463	18.1	5,451	17.8	5,634	18.0	5,837	17.9
Franklin	764	2.7	778	2.7	789	2.6	824	2.7	818	2.6	812	2.5
Hancock	961	3.4	1,015	3.5	1,084	3.6	1,031	3.4	1,052	3.4	1,080	3.3
Kennebec	2,539	9.1	2,681	9.2	2,844	9.4	2,873	9.4	2,945	9.4	3,158	9.7
Knox	674	2.4	743	2.5	803	2.7	853	2.8	900	2.9	905	2.8
Lincoln	591	2.1	631	2.2	614	2.0	596	1.9	648	2.1	639	2.0
Oxford	764	2.8	818	2.8	872	2.9	922	3.0	984	3.1	1,063	3.3
Penobscot	4,160	14.4	4,254	14.6	4,497	14.9	4,453	14.5	4,558	14.6	4,689	14.4
Piscataquis	339	1.2	343	1.2	373	1.2	372	1.2	391	1.2	387	1.2
Sagadahoc	601	2.1	664	2.3	673	2.2	706	2.3	743	2.4	785	2.4
Somerset	683	2.4	685	2.3	687	2.3	678	2.2	688	2.2	735	2.3
Waldo	502	1.7	562	1.9	584	1.9	737	2.4	768	2.5	849	2.6
Washington	932	3.2	917	3.1	988	3.3	957	3.1	956	3.1	978	3.0
York	2,440	8.9	2,513	8.6	2,568	8.5	2,607	8.5	2,664	8.5	2,806	8.6
Subtotal	25,207	89.4	26,085	89.4	26,862	89.0	27,158	88.6	27,837	88.9	28,923	88.7
<b><u>OUT-OF-STATE</u></b>	2,858	10.2	3,078	10.6	3,322	11.0	3,480	11.4	3,483	11.1	3,676	11.3
<b><u>TOTAL</u></b>	<u>28,065</u>	<u>100.0</u>	<u>29,163</u>	<u>100.0</u>	<u>30,184</u>	<u>100.0</u>	<u>30,638</u>	<u>100.0</u>	<u>31,320</u>	<u>100.0</u>	<u>32,599</u>	<u>100.0</u>
<b><u>INTERNATIONAL</u></b>	649	2.3	771	2.6	901	3.0	912	3.0	863	2.8	930	2.9

NOTE: Detail percentages may not add to total due to rounding.

**SPRING 2008 Headcount Enrollment**



**HEADCOUNT ENROLLMENT BY STATE OF RESIDENCE\*****SPRING 2008**

	<u>#</u>	<u>%</u>		<u>#</u>	<u>%</u>
ALASKA	8	0.3	NEBRASKA	3	0.1
ALABAMA	2	0.1	NEVADA	2	0.1
ARKANSAS	3	0.1	NEW HAMPSHIRE	430	15.0
ARIZONA	9	0.3	NEW JERSEY	119	4.1
CALIFORNIA	38	1.3	NEW MEXICO	5	0.2
COLORADO	18	0.6	NEW YORK	153	5.3
CONNECTICUT	234	8.2	NORTH CAROLINA	13	0.5
DELAWARE	7	0.2	NORTH DAKOTA	1	0.0
DISTRICT OF COLUMBIA	2	0.1	OHIO	26	0.9
FLORIDA	30	1.0	OKLAHOMA	2	0.1
GEORGIA	9	0.3	OREGON	5	0.2
HAWAII	2	0.1	PENNSYLVANIA	72	2.5
IDAHO	5	0.2	RHODE ISLAND	47	1.6
ILLINOIS	32	1.1	SOUTH CAROLINA	4	0.1
INDIANA	19	0.7	SOUTH DAKOTA	2	0.1
IOWA	8	0.3	TENNESSEE	5	0.2
KANSAS	7	0.2	TEXAS	20	0.7
KENTUCKY	6	0.2	UTAH	2	0.1
LOUISIANA	2	0.1	VERMONT	184	6.4
MARYLAND	23	0.8	VIRGINIA	35	1.2
MASSACHUSETTS	646	22.5	WASHINGTON	11	0.4
MICHIGAN	33	1.1	WEST VIRGINIA	5	0.2
MINNESOTA	25	0.9	WISCONSIN	11	0.4
MISSISSIPPI	2	0.1	WYOMING	2	0.1
MISSOURI	5	0.2	OTHER	531	18.5
MONTANA	5	0.2	TOTAL	<u>2,870</u> *	<u>100.0</u>

\* Excludes 933 international students of which 593 are from Canada.

NOTE: Percentages may not add to 100.0 due to rounding.



**HEADCOUNT ENROLLMENT BY COUNTRY OF RESIDENCE****SPRING 2008**

	<u>#</u>	<u>%</u>
CANADA	593	63.6
PEOPLES REPUBLIC OF CHINA	63	6.8
INDIA	19	2.0
SAUDI ARABIA	18	1.9
JAMAICA	13	1.4
NEPAL	12	1.3
CHILE	12	1.3
KOREA	11	1.2
OTHER FOREIGN COUNTRIES*	<u>192</u>	<u>20.6</u>
TOTAL	<u><u>933</u></u>	<u><u>100.0</u></u>

\*Includes foreign countries with less than 10 students attending a University of Maine System campus.

NOTE: Percentages may not add to 100.0 due to rounding.

**SPRING 2008 DISTANCE LEARNING ENROLLMENT**  
**ALL STUDENTS TAKING DISTANCE LEARNING COURSES**

The table below provides a summary profile of students taking distance education courses (i.e. through interactive television, the internet or another delivery mode). Students taking an ITV course at the broadcast sites, i.e. the classroom at which the course originated, are excluded as the broadcast course represents a traditional university course that would have historically been offered whether or not ITV existed.

	UM	UMA	UMF*	UMFK	UMM	UMPI	USM	TOTAL
TOTAL	376	1,577	2	357	546	123	228	3,209
Associate	0	466	0	1	0	0	0	467
Freshman	1	134	0	0	2	0	3	140
Sophomore	6	129	0	0	0	1	6	142
Junior	20	187	0	2	3	0	4	216
Senior	33	304	0	0	1	2	12	352
Graduate	19	0	0	0	1	0	65	85
Law	0	0	0	0	0	0	0	0
Non-Degree	297	357	2	354	539	120	138	1,807
Full-Time	61	406	0	4	7	0	31	509
Part-Time	315	1,171	2	353	539	123	197	2,700
In-State	355	1,572	2	348	526	119	223	3,145
Out-of-State	21	5	0	9	20	4	5	64
Men	102	347	1	64	105	24	35	678
Women	274	1,230	1	293	441	99	193	2,531
ITV Credit Hours	1,279	7,757	8	1,347	1,949	384	775	13,499
F. T. E.	89	517	1	90	130	26	59	912
AGE*								
22 or less	98	317	0	67	78	13	33	606
23 to 30	104	463	0	109	172	35	55	938
31 to 40	85	413	0	100	140	40	54	832
41 to 50	63	268	0	58	111	24	50	574
51 or more	26	115	2	23	45	11	35	257
*Age ranges may not add to total headcount due to missing birth dates.								
Only Distance Education Headcount	<u>311</u>	<u>858</u>	<u>2</u>	<u>354</u>	<u>539</u>	<u>118</u>	<u>187</u>	<u>2,369</u>

● This table shows **all** students taking at least one distance education course, whether they are taking only distance education courses or are taking distance education courses and at least one non-distance education course.

● The students shown in the above table have already been counted in the enrollment figures in all other tables. These numbers should not be added to previously reported university enrollment figures.

● Only distance education headcount enrollment students are those students taking only distance learning courses and no other courses.

● Effective with the Fall 1995 semester, students enrolled in distance learning receive site courses are counted as part of the enrollment of the university that is broadcasting the course, regardless of where the receive sites are located.

\*UMF: Undergraduate Credit Hours/16 + Graduate Credit Hours/9 = FTE