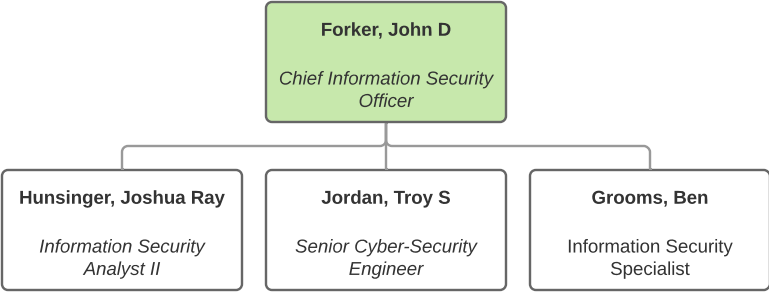


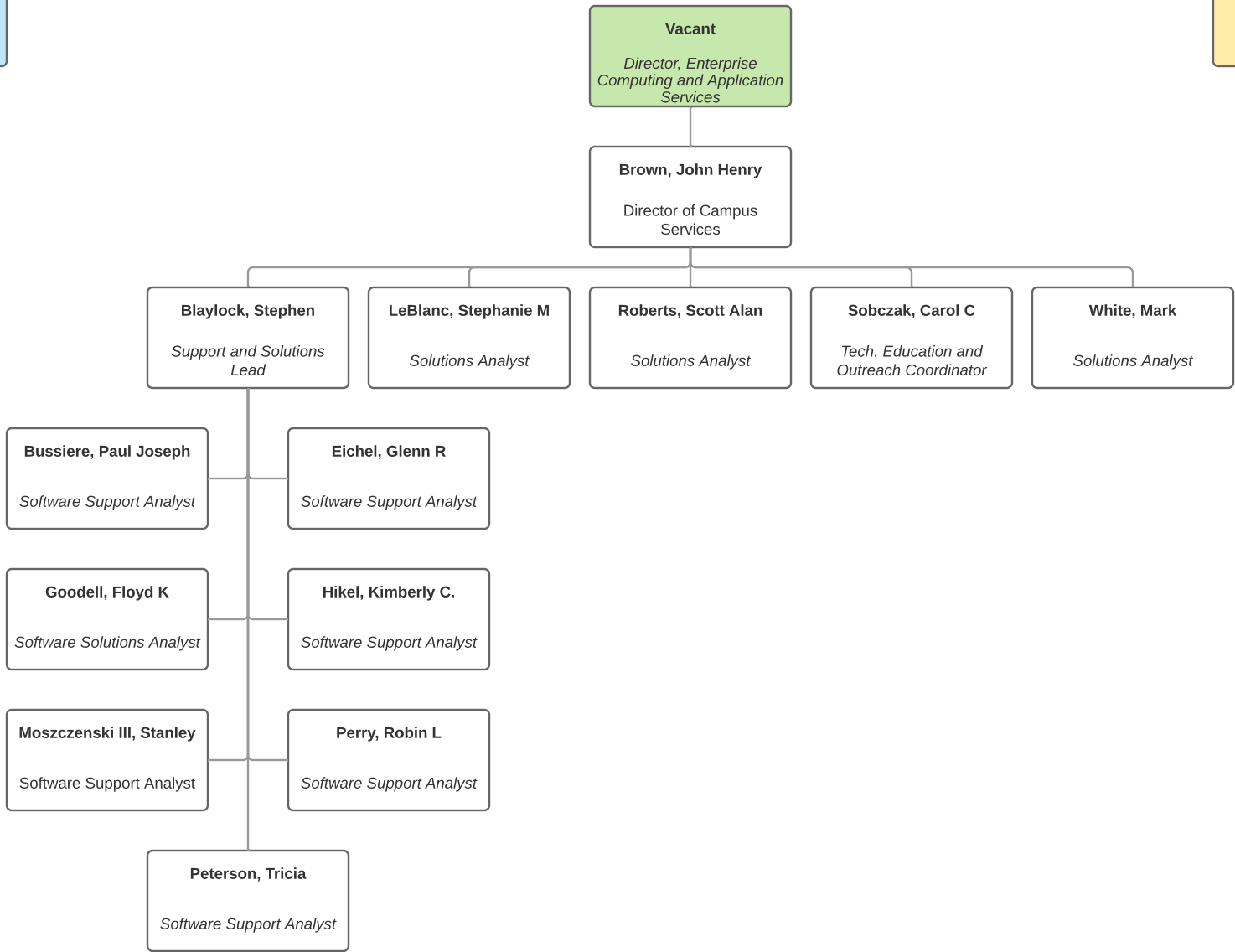
Return to  
Functional Chart

Information Security



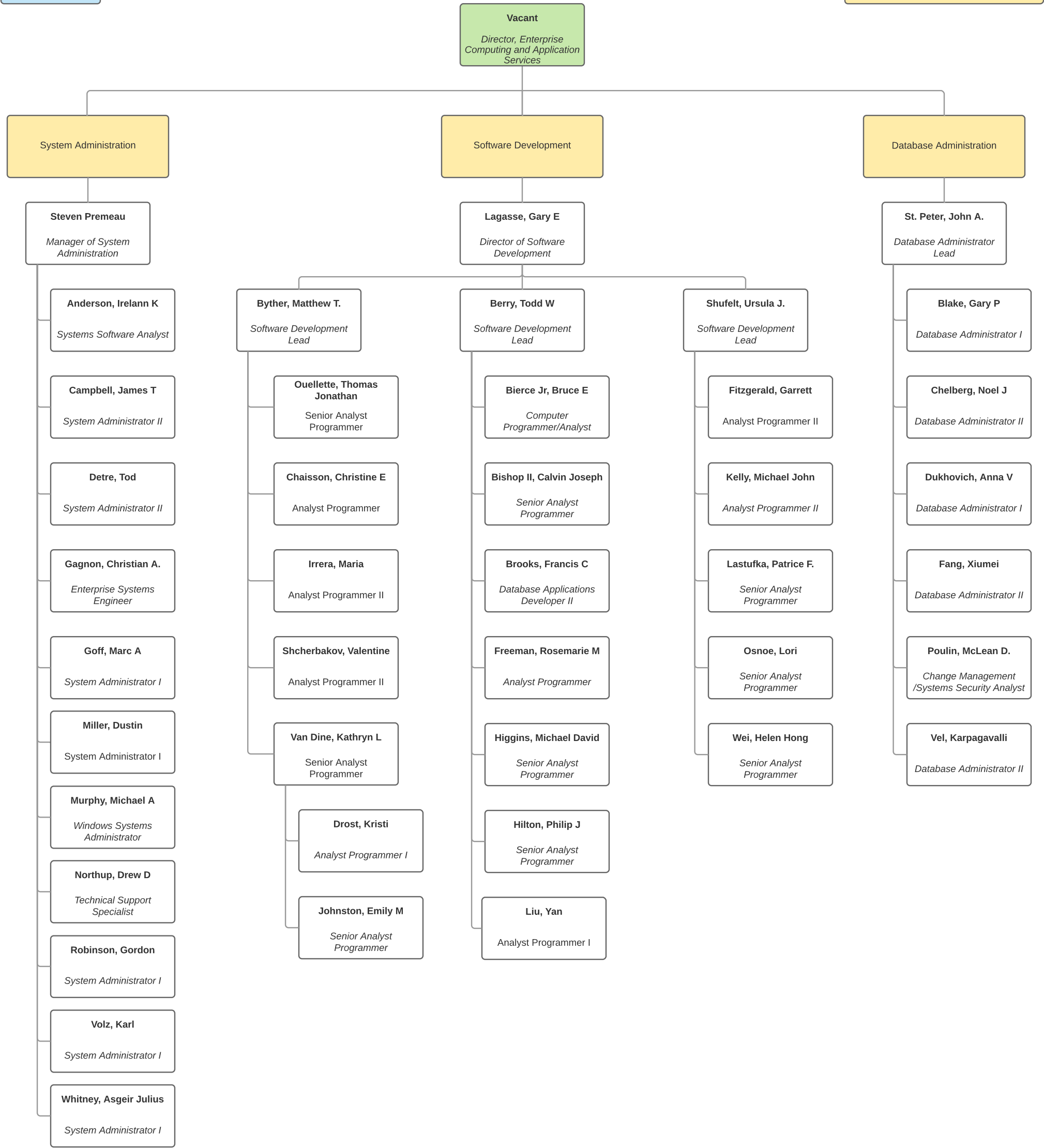
Return to Functional Chart

**Campus Academic and Business Solutions [CABS]**



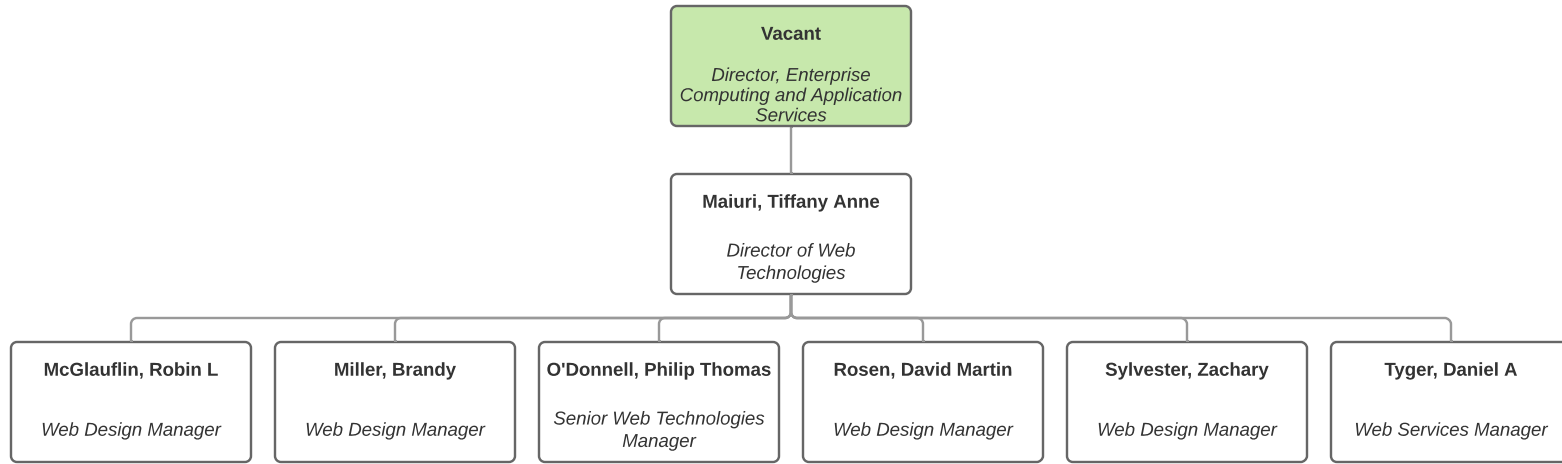
Return to Functional Chart

# Enterprise Computing & Application Services [ECAS]



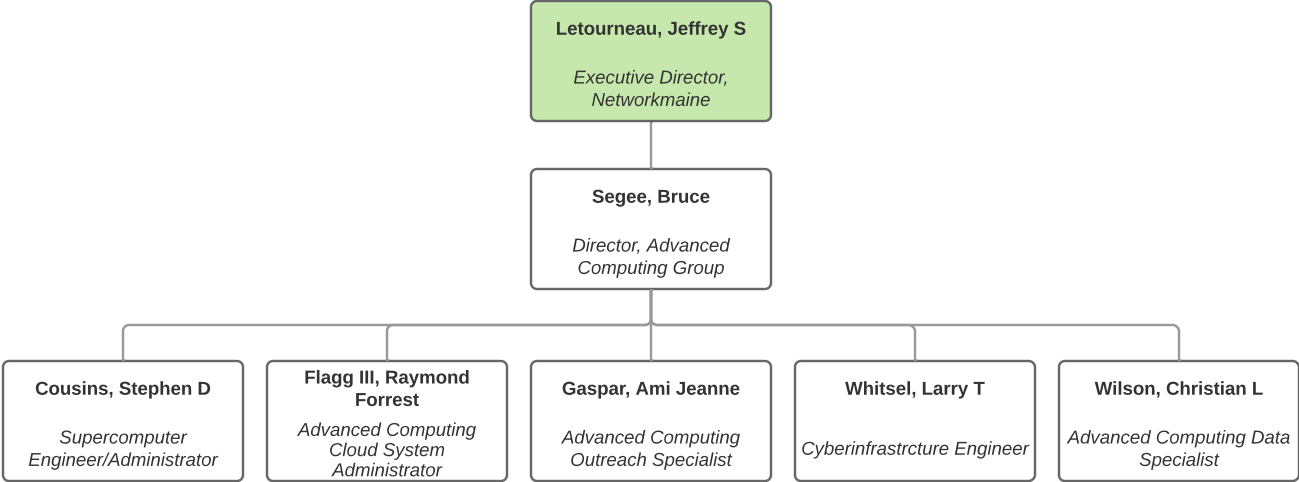
[Return to Functional Chart](#)

## Web Technologies



[Return to Functional Chart](#)

# Advanced Computing Group



Return to  
Functional Chart

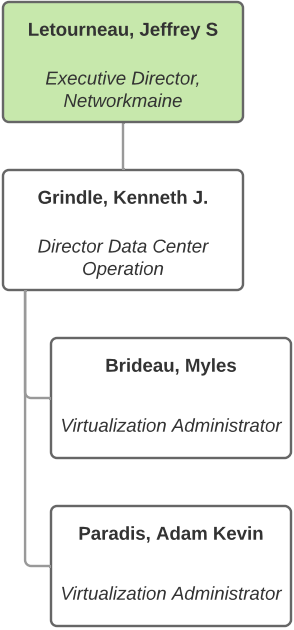
Data Center Operations

**Letourneau, Jeffrey S**  
*Executive Director,  
Networkmaine*

**Grindle, Kenneth J.**  
*Director Data Center  
Operation*

**Brideau, Myles**  
*Virtualization Administrator*

**Paradis, Adam Kevin**  
*Virtualization Administrator*



Return to  
Functional Chart

**Network Services**

**Letourneau, Jeffrey S**  
*Executive Director,  
Networkmaine*

**Parker, Lori Ann**  
*Administrative Clerk*

**Henry, Andrew Willard**  
*Network Operations Center  
Coordinator*

**Lavoie, Corey D.**  
*Dir., Structured Cabling*

**Peirce, Garret Dean**  
*Network Architect*

**Perloff, Anne R.**  
*E-Rate Coordinator*

**Curtis, Kimberly Lynn**  
*IT Specialist CL2*

**Brooks Jr, Edward C**  
*Telecommunications Pbx  
Specialist*

**Cyber Security and  
Campus Networks**

**Network Engineering**

**Voice/Video Engineering**

**Caldwell, Natasha Rae**  
*Administrative Specialist  
CL2*

**Strout, Susanne E**  
*On-site Support Technician*

**Knowles, Kent A**  
*Telecommunications  
Specialist II*

**Soucy, Ray P**  
*Senior Cyber-Security  
Engineer*

**McDonald, Jason Michael**  
*Network Engineer I*

**Boynton, Todd E**  
*Unified Communications  
Analyst*

**Dow, Trecia Catherine**  
*Administrative Specialist  
(Conf) CL2*

**Richardson, David S**  
*Telecommunications  
Specialist II*

**Deproffio, Steven  
Anthony**  
*Network Engineer I*

**Wood, Lucas Alexander**  
*Network Engineer I*

**Damboise, Eric J**  
*Sr. Unified Comm.  
Engineer*

**Paradis, Ryan**  
*Network Engineer I*

**Huskins, John Patrick**  
*Telecommunications  
Analyst*

**Patenaude, Joseph**  
*Network Engineer I*

**Shain, Buddwood**  
*Network Engineer I*

**Thibault, Christopher R**  
*Network Engineer I*



Return to  
Functional Chart

**Data, Analytics & Reporting  
Technology Services  
[DARTS]**

**Demers, David**  
CIO

**Groenhout, Rachel C**  
Director of Institutional Data  
Management

**Andersen, Peter S.**  
*Senior Reporting Technical  
Analyst*

**Gelsinger, Emma Lavonne**  
*Data Visualization Analyst*

**Jensen, Jeffrey A**  
*Data Systems Developer*

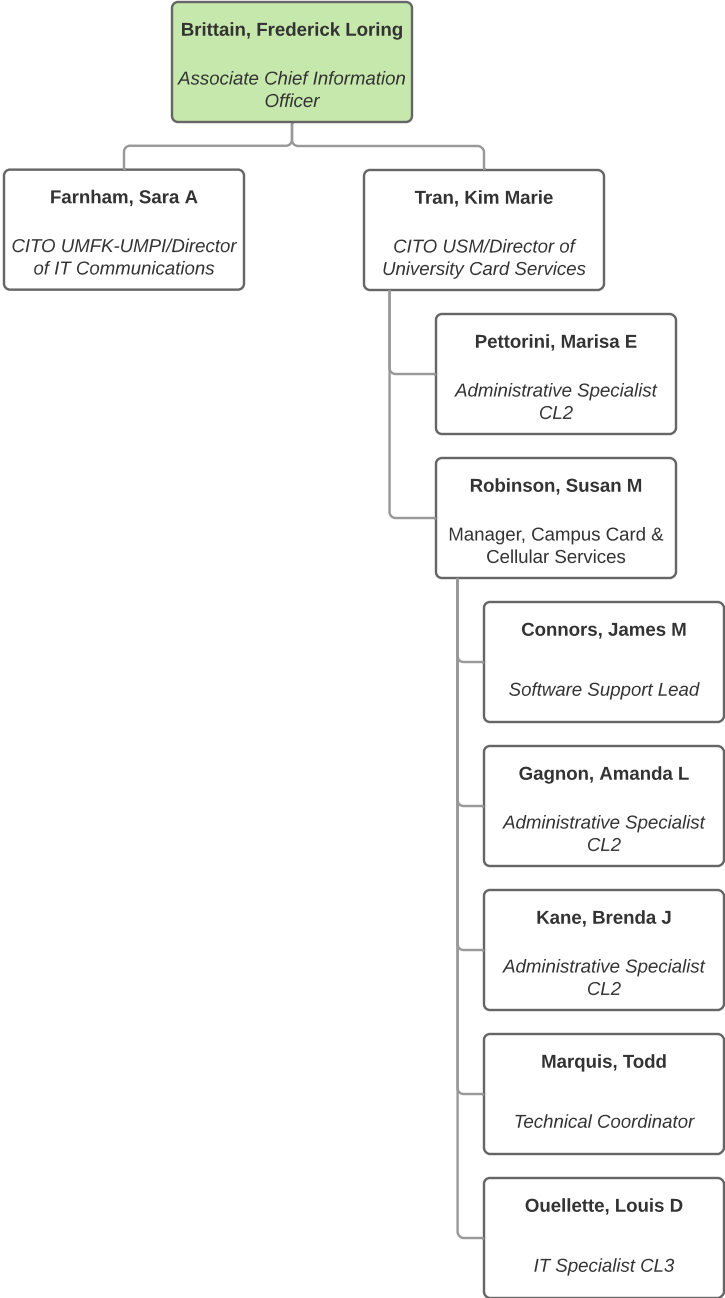
**Larsen, Corina C**  
*Data Documentation and  
Training Coordinator*

**Saarinen, Tamara J**  
*Data Quality Analyst*

**Yanagi, Miki**  
Data Visualization Analyst

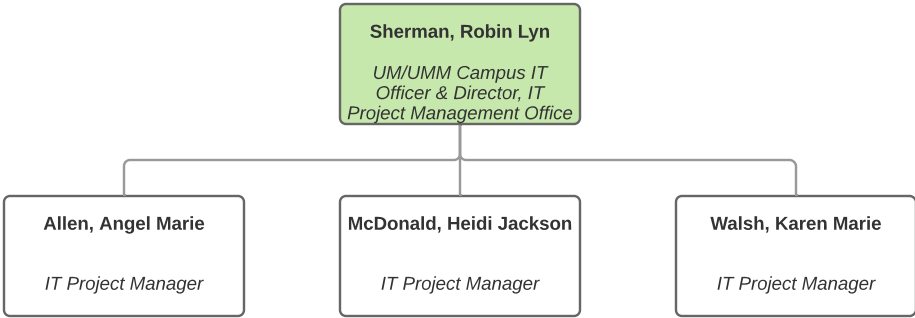
Return to  
Functional Chart

Card Services and  
Communication



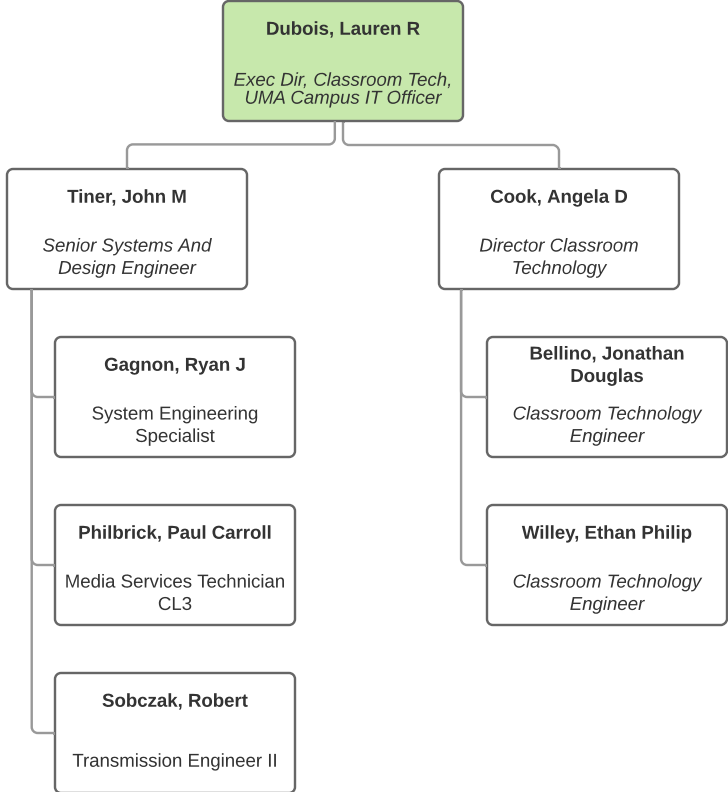
Return to  
Functional Chart

Project Management Office  
[PMO]



Return to  
Functional Chart

**Classroom Technology**



Return to  
Functional Chart

UMA ITSS

**Dubois, Lauren R**  
*Exec Dir, Classroom Tech,  
UMA Campus IT Officer*

**Kelleter, Tanner**  
*Campus IT Operations Mgr  
UMA*

**Fisher, Marc D**  
IT Specialist CL3

**Godin Jr, Kevin**  
IT Specialist CL3

**Lefebvre, James Matthew**  
Support Services Technical  
Lead

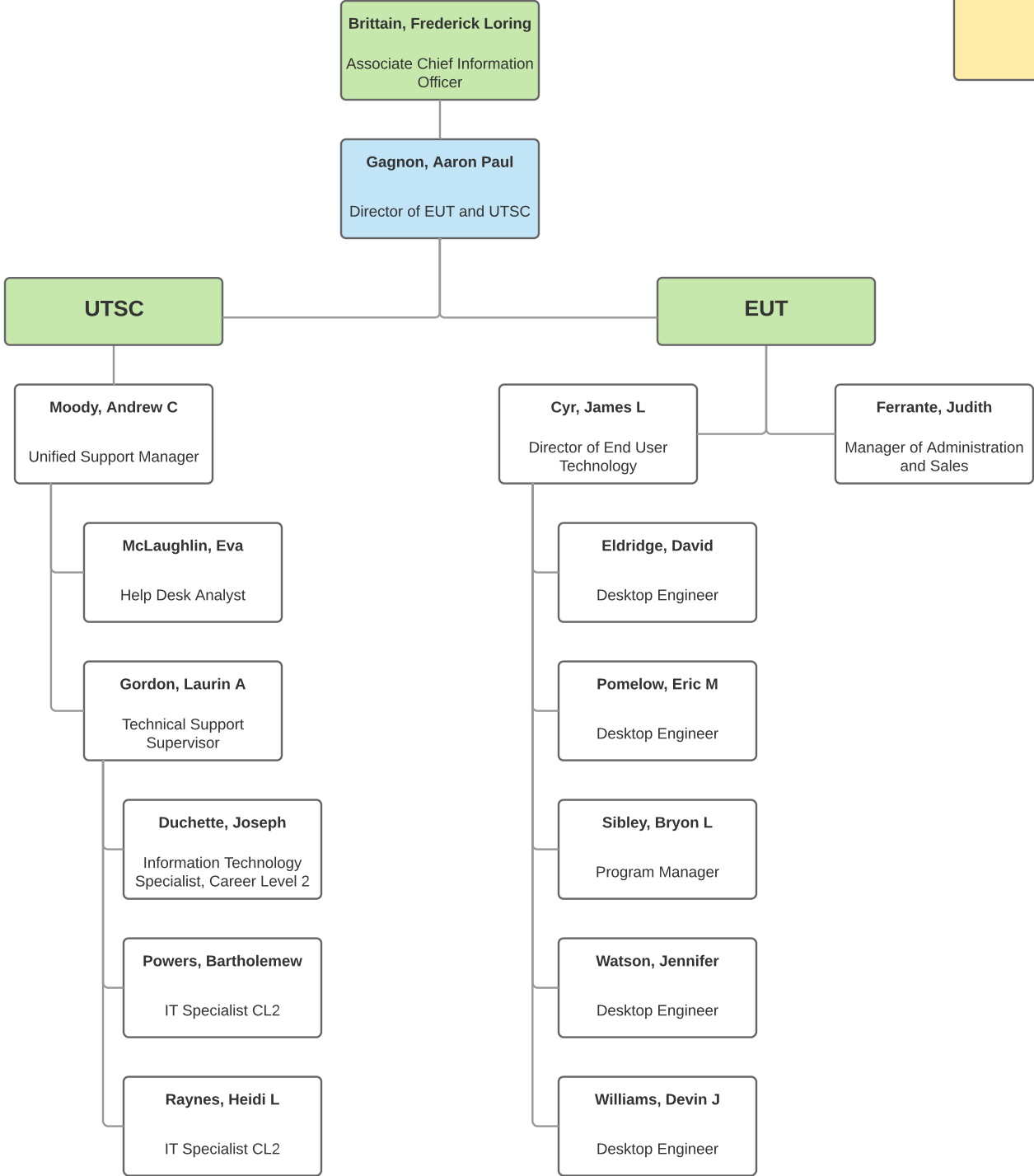
**Smith, Lloyd M**  
Systems & Network  
Specialist II

**Veilleux, Christopher M**  
IT Specialist CL3

**Warenda, John**  
IT Specialist CL3

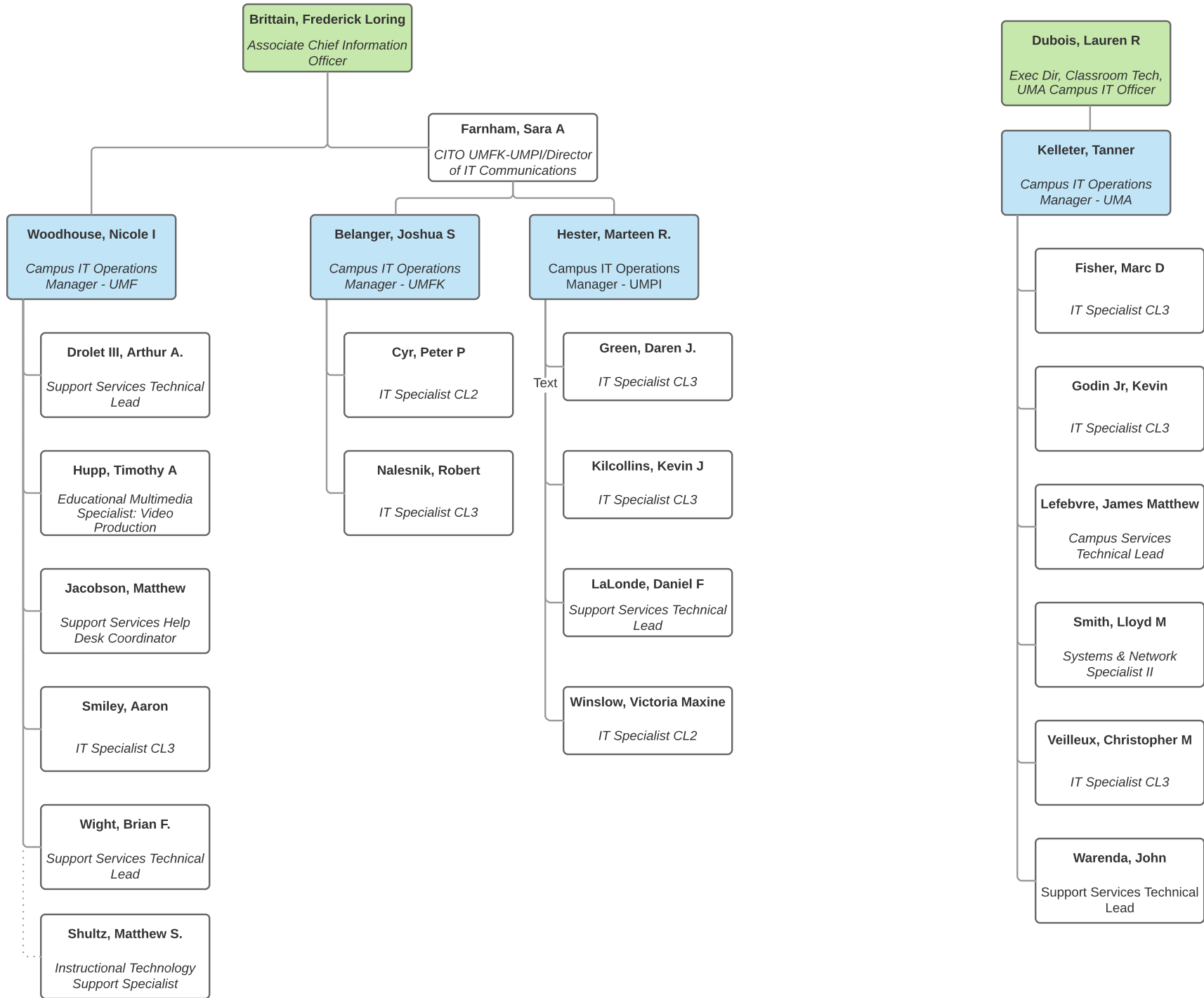
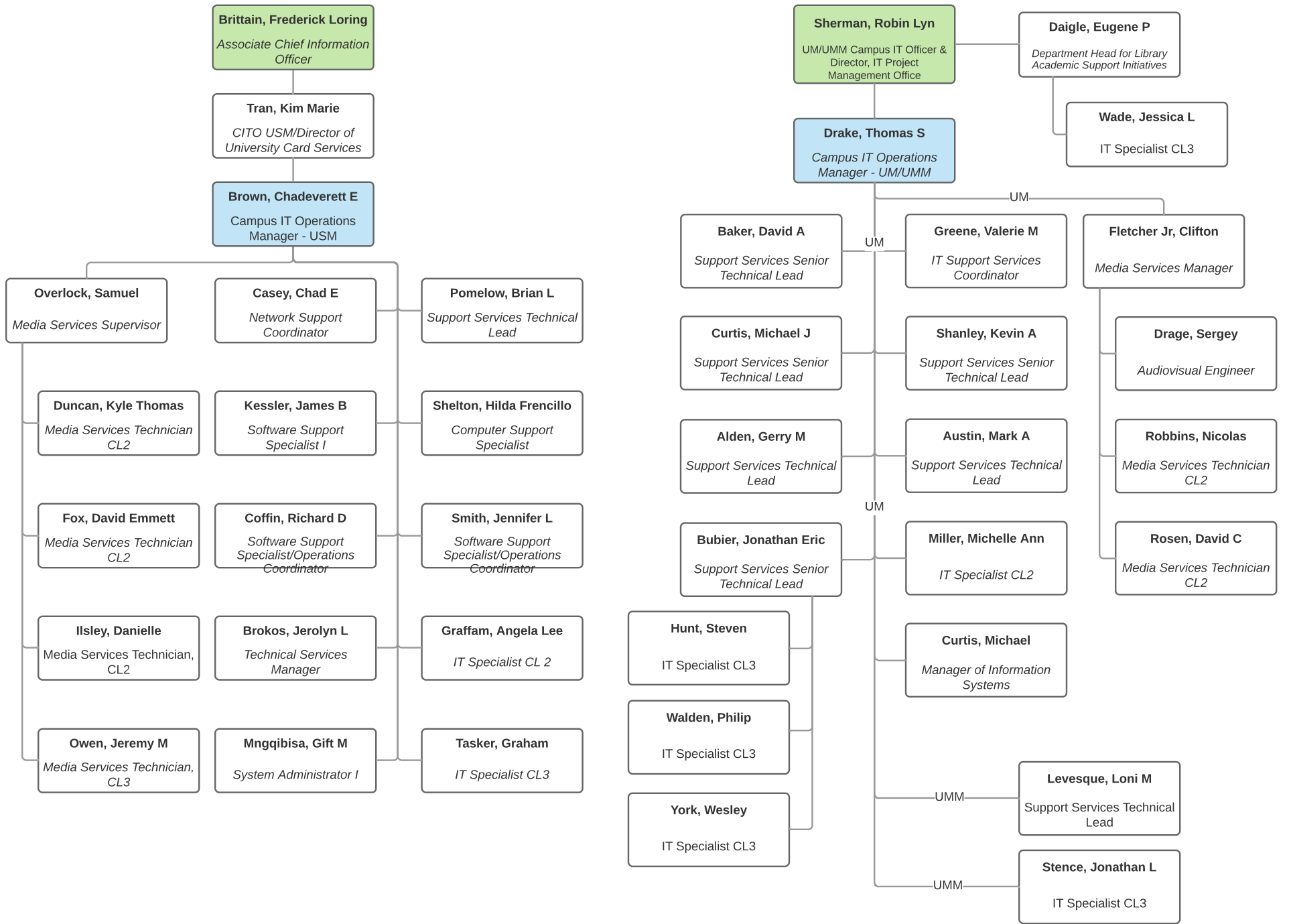
Return to  
Functional Chart

EUT and UTSC



Return to Functional Chart

### Support Services All Campuses



Return to  
Functional Chart

ITSS UMPI

**Brittain, Frederick Lorin**  
Associate Chief Information  
Officer

**Farnham, Sara A**  
CITO UMFK-UMPI/Director  
of IT Communications

**Hester, Marteen R.**  
Campus IT Operations  
Manager - UMPI

**Green, Daren J.**  
IT Specialist CL3

**Kilcollins, Kevin J**  
IT Specialist CL3

**LaLonde, Daniel F**  
Support Services Technical  
Lead

**Winslow, Victoria Maxine**  
IT Specialist CL2



Return to  
Functional Chart

UMFK ITSS

**Brittain, Frederick Loring**  
*Associate Chief Information  
Officer*

**Farnham, Sara A**  
CITO UMFK-UMPI/Director  
of IT Communications

**Belanger, Joshua S**  
Campus IT Operations  
Manager UMFK

**Cyr, Peter P**  
IT Specialist CL2

**Nalesnik, Robert**  
IT Specialist CL3

Return to  
Functional Chart

UMF ITSS

**Brittain, Frederick Loring**  
*Associate Chief Information  
Officer*

**Woodhouse, Nicole I**  
*Campus IT Operations  
Manager - UMF*

**Adams, Nicole Elizabeth**  
IT Specialist CL3

**Drolet III, Arthur A.**  
Support Services Technical  
Lead

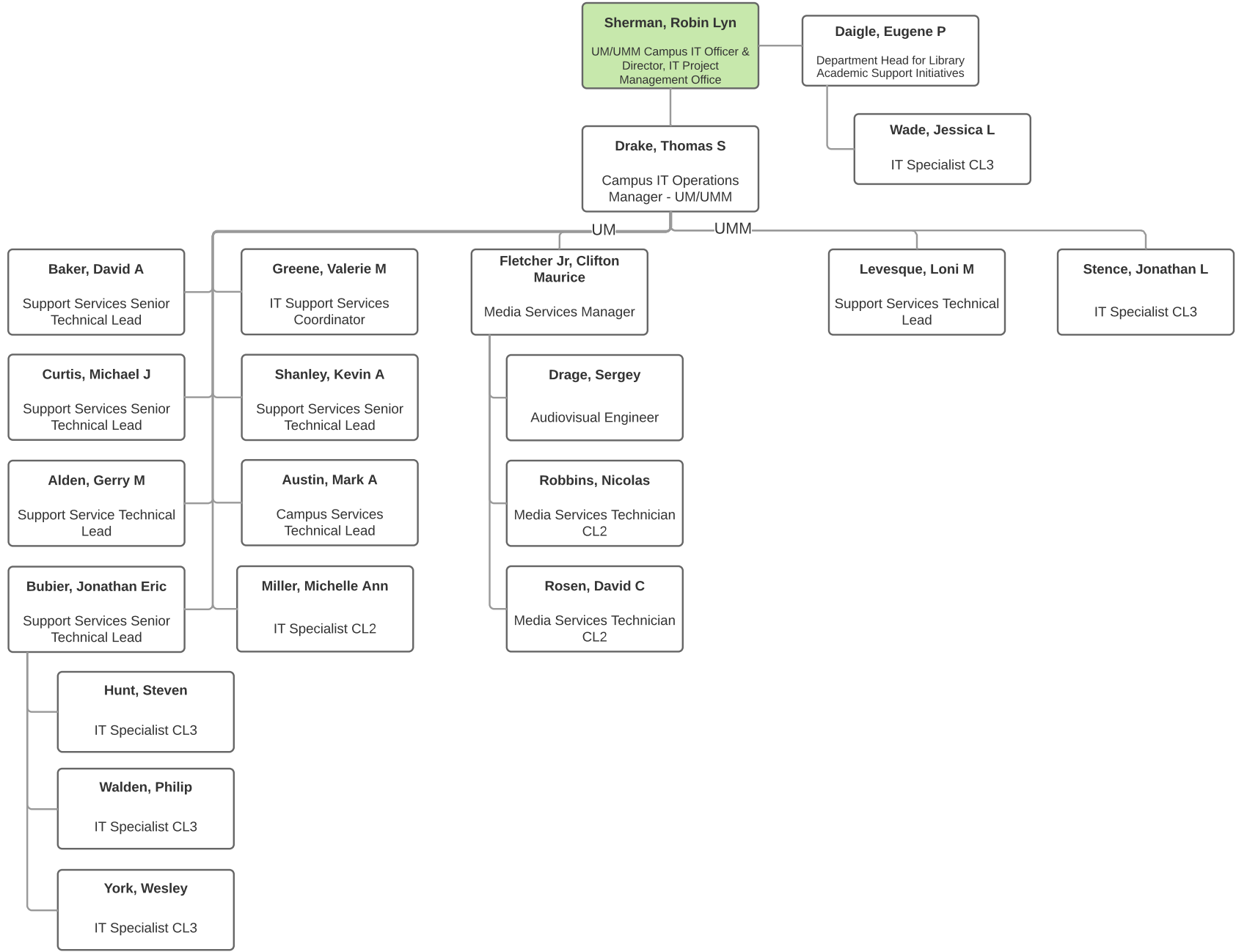
**Hupp, Timothy A**  
Educational Multimedia  
Specialist: Video  
Production

**Smiley, Aaron**  
IT Specialist CL3

**Wight, Brian F.**  
Support Services Technical  
Lead

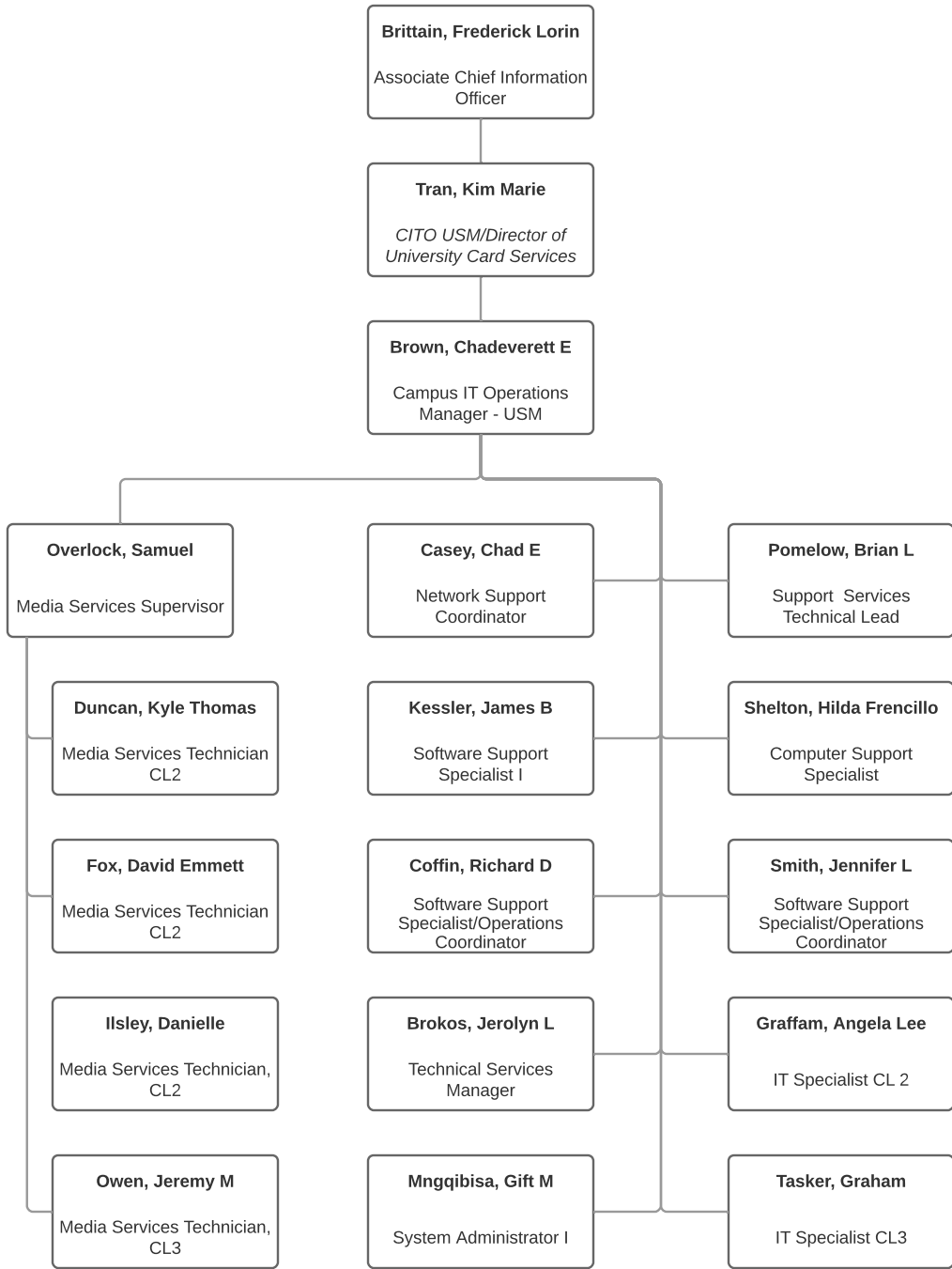
Return to  
Functional Chart

UM/UMM ITSS



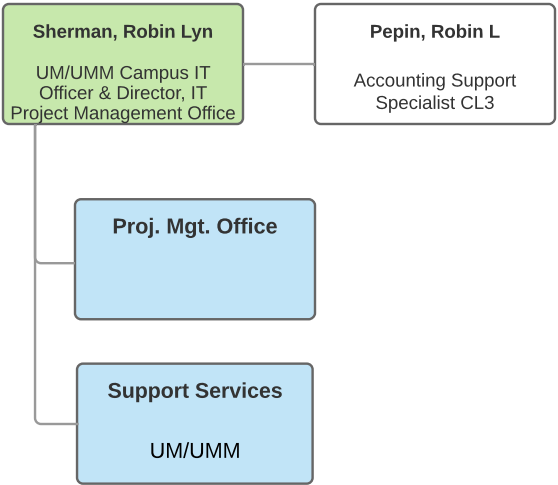
[Return to Functional Chart](#)

**IT Support Services - USM**



Return to  
Functional Chart

UM-UMM Leadership/PMO



Return to  
Functional Chart

Associate CIO

**Brittain, Frederick Loring**  
Associate Chief Information  
Officer

**Support Services**  
USM/UMF/UMPI/UMFK

**University Technology  
Support Center and End  
User Tech**

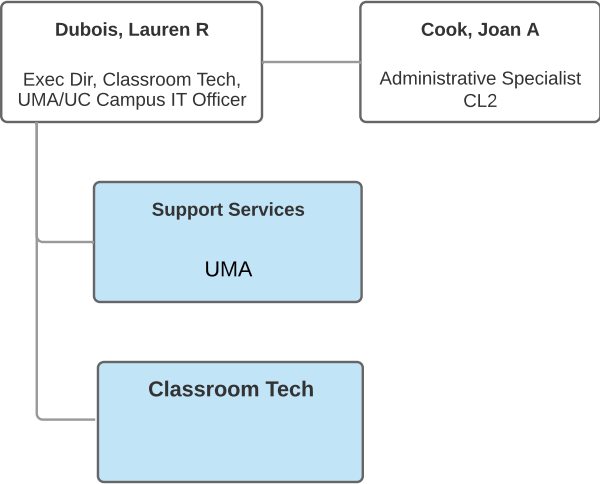
**Card Services**

**Communication**



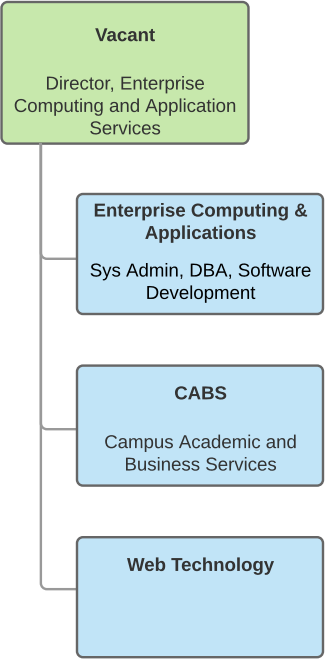
Return to  
Functional Chart

**Classroom Tech  
UMA/UC IT**



Return to  
Functional Chart

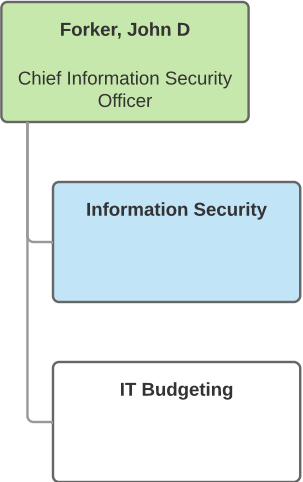
ECAS





Return to  
Functional Chart

Office of Information  
Security



Return to  
Functional Chart

**Networkmaine**

